



AC HYDRAULIC
NO COMPROMISE





KENNY V. ANDERSEN 
SALES MANAGER
E-Mail: ka@ac-hydraulic.dk
Dir.: +45 8727 6408
Worldwide



LARS STORGAARD 
EXPORT MANAGER, INGROUND LIFT
E-Mail: ls@ac-hydraulic.dk
Dir.: +45 8727 6450
Worldwide



SIMON MUNCH LAURSEN 
EXPORT MANAGER, INGROUND LIFT
E-Mail: sml@ac-hydraulic.dk
Dir.: +45 8727 6422
Worldwide



JESPER VESTERGAARD 
EXPORT MANAGER
E-Mail: jv@ac-hydraulic.dk
Dir.: +45 8727 6402
Scandinavia, Russia



UWE ELBERT 
EXPORT MANAGER
E-Mail: ue@ac-hydraulic.dk
Dir.: +49 (0)5409 989344
Germany, Austria, Switzerland



BJÖRN WICHMANN 
EXPORT MANAGER
E-Mail: bw@ac-hydraulic.dk
Dir.: +49 151 50469821
Germany




HENRIK K. TORRILD 
EXPORT MANAGER
E-Mail: hkt@ac-hydraulic.dk
Dir.: +45 8727 6403
Belgium, Netherlands, France, Spain, Italy




PATRICK DUBOIS 
BUSINESS DEVELOPMENT MANAGER
E-Mail: pd@ac-hydraulic.com
Dir.: +1 438 686 1744
US and Canada



CARLO ALARONI 
UK BUSINESS DEVELOPMENT MANAGER
E-Mail: ca@ac-hydraulic.dk
Dir.: +44 (0)1257 474737
Great Britain, Ireland




ANDERS ØSTER 
TECHNICAL SALES SUPPORT
E-Mail: aoe@ac-hydraulic.dk
Dir.: +45 8727 6423



ENA ASAA 
SALES COORDINATOR
E-Mail: jv@ac-hydraulic.dk
Dir.: +45 8727 6402



MALENE LIST 
SALES ASSISTANT
E-Mail: sales@ac-hydraulic.dk
Dir.: +45 8727 6444

INDEX



ABOUT US
PAGE 4-5



INGROUND LIFTS
PAGE 6-9



HYDRAULIC JACKS
PAGE 10-14



AIR HYDRAULIC JACKS
PAGE 15-21



HEAVY DUTY JACKS
PAGE 22-25



JACKING BEAMS
PAGE 26-30



HEAVY DUTY JACKING BEAMS
PAGE 31-32, 39-42



PIT JACKS
PAGE 33-42



CRANES
PAGE 43-44



TRANSMISSION JACKS
PAGE 45-47



WHEEL TROLLEYS
PAGE 48-49



PRESSES
PAGE 50-54



LIFTING EQUIPMENT FOR AIRCRAFTS
PAGE 55-58



AXLE STANDS
PAGE 59-61



BOTTLE JACKS
PAGE 62-63



SPECIFICATION FORMS
PAGE 64-65



NO COMPROMISE



History

AC Hydraulic A/S is a family owned company situated in Viborg, Denmark.

The company was established in 1958 by master smith Anker Christensen (AC). Shortly after launching his handicraft and repair shop Anker Christensen was inspired to design and develop high quality lorry and workshop cranes.

His original concept became the base of production and the AC crane was soon known in all of Denmark for its high quality.

Development of a wide range of lifting equipment soon took place and with the extended product range the company was ready to move into export.

Today AC Hydraulic A/S is a medium-sized, financially sound company exporting more than 80% of its production. The company is managed by the 3rd generation, sole owners, Søren and Claus Anker Christensen.



Production

Our products are "MADE IN DENMARK" in a modern high-tech production plant to a wide extent consisting of robots, laser cutting machines and state-of-the-art CNC machinery.

AC Hydraulic A/S employs 130 experienced and well-trained people that make it a point of honour to produce the best and most innovative quality products on the market.

We develop, produce and market our products in a modern 12.500 m² plant and we invest regularly in new machines and production methods.

Development

To be constantly at the leading edge of developments the AC product developers seek to improve the current product range as well as develop new products to meet market demands and needs.

We have therefore been able to build a strong market position and create a high level of customer satisfaction. AC has been successfully developed into a brand known for high quality and innovative solutions.

Quality

We make it a point of honour always to supply the best quality.

To ensure a constant high quality every product is being tested before shipment. This and many other points appear from our quality management system certified according to ISO 9001.



Markets

AC Hydraulic A/S is market leader within most of its product areas. Our range is being distributed world wide to more than 50 countries.

Our distribution network consists of carefully chosen dealers and partners, all of them dedicated as well as highly professional.

In most workshops all over Europe you can find an AC product – your guarantee for a thoroughly tested quality product you can rely on.

Vision

Our overall vision is to be one of the best and most respected hydraulic companies in Europe within our field of expertise. Nothing less.

We are constantly striving to improve on the original concepts of our values:

EXCELLENCE IN QUALITY, SAFETY, DESIGN & SERVICE

+

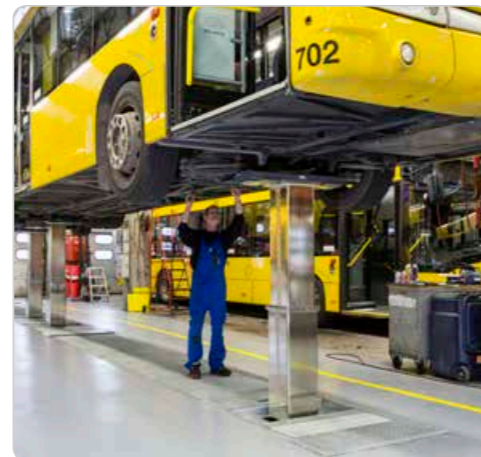
INNOVATION AND AVAILABILITY

It is an everlasting pursuit of perfection and maybe we will never be able to live 100% up to all of our goals.... but we try!

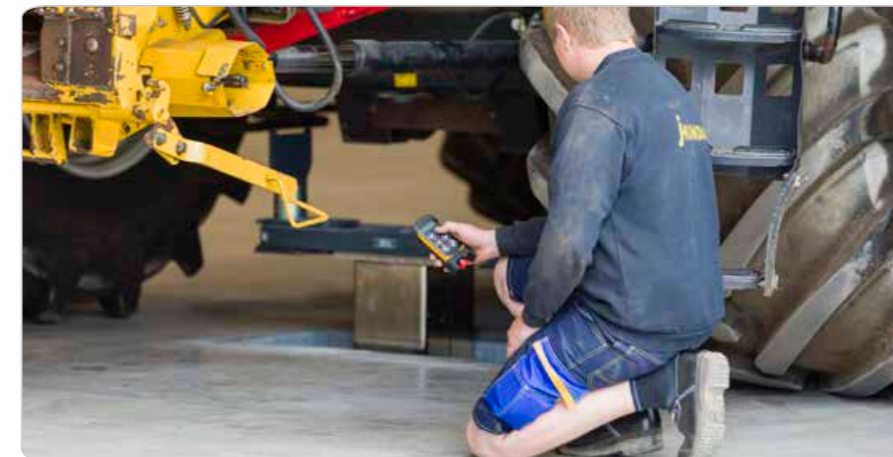


A future-proof and flexible lift that can handle all lifting tasks
 Up to 8 movable lifting columns, each column has a capacity of 15 t
 Wireless remote control as standard
 Lifts with 3 columns or more can be divided in groups and work as separate lifts
 Cassette or frame solution
 Customized length
 The cross beams can be stored at floor level over the full pit length
 The rolling cover can withstand up to 7 t load
 Particularly suitable for workshops servicing many different vehicle types

For further information please visit our website or contact us for a leaflet



Wireless remote control as standard
 Fully automated and easily operated using a wireless remote control
 Quick and easy inspection of the lifting points
 Adjust each column individually with the wireless remote control
 The control panel allows full view of the vehicle whilst lifting
 Information on screen about the operation of the lift, column positions as well as safety and maintenance updates
 The rolling cover follows the column movement and eliminates the need to handle cover plates manually





CASSETTE OR FRAME, CHOOSE THE OPTIMUM SOLUTION FOR YOUR PROJECT



Cassette solution
Delivered completely assembled, pre-tested and ready to be plugged in

Frame solution
Frame delivered separate, lifting columns and circuits retrofitted



Accessories

Supplied standard with various lifting saddles for the cross beams which ensures lifting of practically all types of vehicles

Customized lifting saddles and other accessories are optional

The accessory trolley carries 36 adapters and/or extensions (not standard)

For details and full range of accessories please visit our website or contact us for a leaflet.

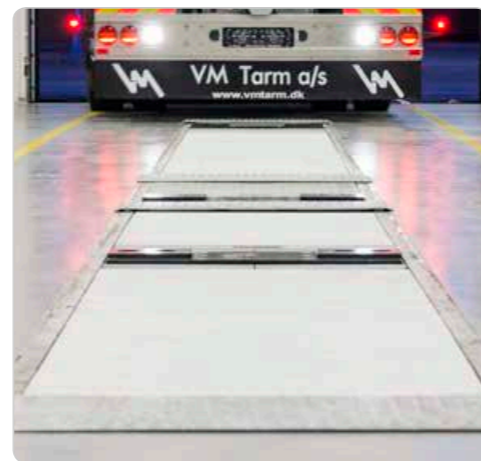
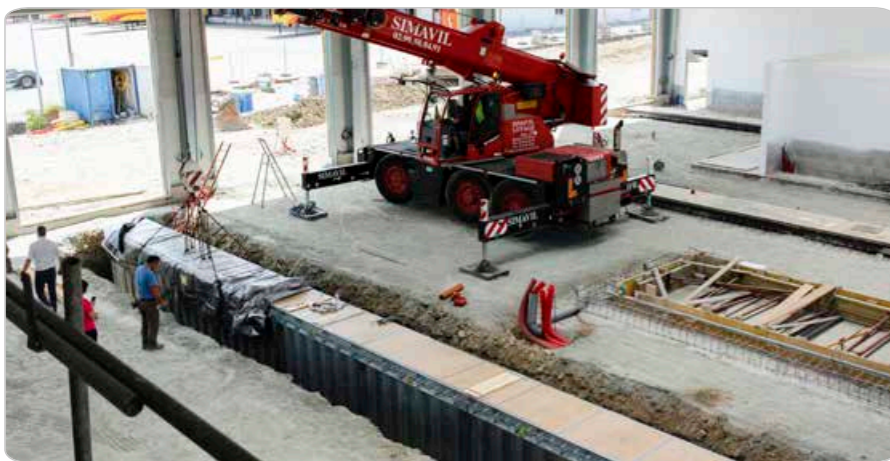
Lifting columns

Up to 8 movable lifting columns, each column has a capacity of 15 t

Optimum safety with 2 independent hydraulic circuits in each lifting column

The hydraulic circuits are fully protected inside the square lifting columns

CE-marked: comply with European Standard EN 1493



AC HYDRAULIC JACKS

DK20 / DK20Q



Capacity: 2,0 t
Max. height: 495 mm

Jack for passenger cars and vans

Very low minimum height of only 80 mm
Wide and robust frame made of high-strength steel
Precise and safe control whilst lowering
Manual dead man's release for optimum safety when lowering
Built-in safety overload valve
Noiseless wheels incorporating a polyurethane central O ring offers maximum surface protection
Ergonomically designed handle ensuring positive and safe operation
DK20Q is fitted with quick-lift pedal for easy reach of lifting point



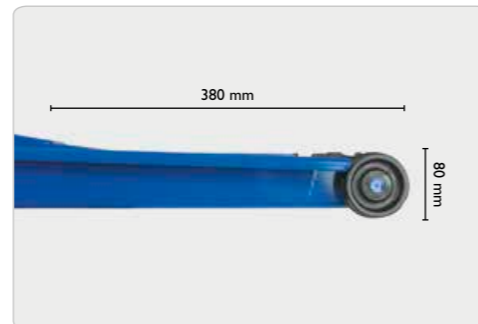
DK13HLQ



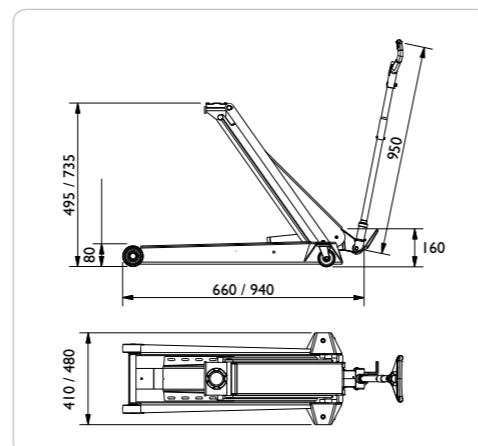
Capacity: 1,3 t
Max. height: 735 mm

High lifter with long reach, ideal for cars with low clearance

Very low minimum height of only 80 mm
Wide and robust frame made of high-strength steel
Fitted with quick-lift pedal for easy reach of lifting point
Precise and safe control whilst lowering
Manual dead man's release for optimum safety when lowering
Built-in safety overload valve
Noiseless wheels incorporating a polyurethane central O ring offers maximum surface protection
Ergonomically designed handle ensuring positive and safe operation



	DK20	DK20Q	DK13HLQ
Capacity	2,0 t	2,0 t	1,3 t
Min. height	80 mm	80 mm	80 mm
Max. height	495 mm	495 mm	735 mm
Frame length	660 mm	660 mm	940 mm
Handle length	950 mm	950 mm	950 mm
Frame height	160 mm	160 mm	160 mm
Width	410 mm	410 mm	480 mm
Weight	31 kg	31 kg	39 kg



AC HYDRAULIC JACKS

DK20HLQ



Capacity: 2,0 t
Max. height: 795 mm

High lifting jack ideal for SUVs and vans

Very low minimum height of only 80 mm
Wide and robust frame made of high-strength steel
Fitted with quick-lift pedal for easy reach of lifting point
Precise and safe control whilst lowering
Manual dead man's release for optimum safety when lowering
Built-in safety overload valve
Noiseless wheels incorporating a polyurethane central O ring offers maximum surface protection
Ergonomically designed handle ensuring positive and safe operation



DK50HLQ



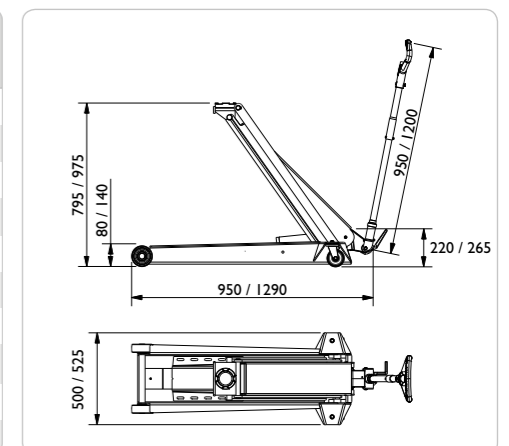
Capacity: 5,0 t
Max. height: 975 mm

High lifting jack for trucks, agricultural machinery & contractors' machines

Low minimum height of only 140 mm
Can be fitted with pneumatic tyres for easy manoeuvring (option)
Wide and robust frame made of high-strength steel
Fitted with quick-lift pedal for easy reach of lifting point
Precise and safe control whilst lowering
Manual dead man's release for optimum safety when lowering
Built-in safety overload valve
Ergonomically designed handle ensuring positive and safe operation



	DK20HLQ	DK50HLQ
Capacity	2,0 t	5,0 t
Min. height	80 mm	140 mm
Max. height	795 mm	975 mm
Frame length	950 mm	1290 mm
Handle length	950 mm	1200 mm
Frame height	220 mm	265 mm
Width	500 mm	525 mm
Weight	49 kg	170 kg



AC HYDRAULIC JACKS

DK40Q / DK60Q



Capacity: 4,0 / 6,0 t
Max. height: 600 mm

Jack for trucks, agricultural machinery & contractors' machines

Low minimum height of only 140 mm
Can be fitted with pneumatic tyres for easy manoeuvring (option)
Wide and robust frame made of high-strength steel
Fitted with quick-lift pedal for easy reach of lifting point
Precise and safe control whilst lowering
Manual dead man's release for optimum safety when lowering
Built-in safety overload valve
Ergonomically designed handle ensuring positive and safe operation



DK100Q / DK120Q



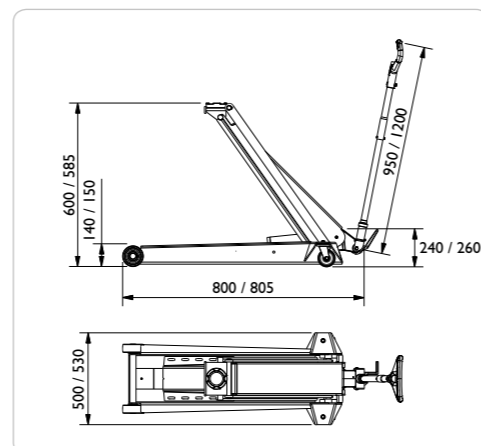
Capacity: 10,0 / 12,0 t
Max. height: 585 mm

Jack for trucks, agricultural machinery & contractors' machines

Low minimum height of only 150 mm
Can be fitted with pneumatic tyres for easy manoeuvring (option)
Wide and robust frame made of high-strength steel
Fitted with quick-lift pedal for easy reach of lifting point
Precise and safe control whilst lowering
Manual dead man's release for optimum safety when lowering
Built-in safety overload valve
Ergonomically designed handle ensuring positive and safe operation



	DK40Q	DK60Q	DK100Q	DK120Q
Capacity	4,0 t	6,0 t	10,0 t	12,0 t
Min. height	140 mm	140 mm	150 mm	150 mm
Max. height	600 mm	600 mm	585 mm	585 mm
Frame length	800 mm	800 mm	805 mm	805 mm
Handle length	950 mm	1200 mm	950 mm	1200 mm
Frame height	240 mm	240 mm	260 mm	260 mm
Width	500 mm	500 mm	530 mm	530 mm
Weight	95 kg	95 kg	118 kg	118 kg



AC HYDRAULIC JACKS

FJ40



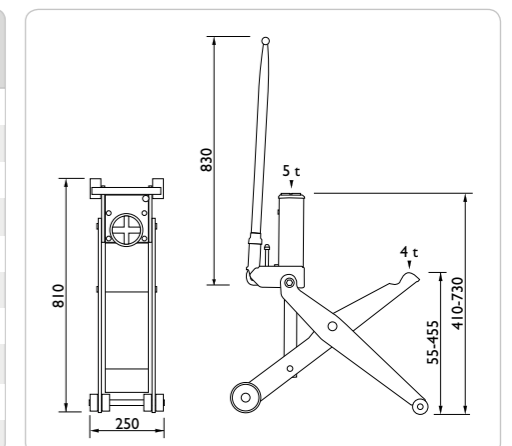
Capacity: 4,0 / 5,0 t
Max. height: 455 / 730 mm

Jack for fork lifts – also suitable for agriculture and industry

Extremely low minimum height of only 55 mm
With 2 lifting heights (scissors 55-455 mm, cylinder 410-730 mm)
Scissor capacity: 4 tonnes, cylinder capacity: 5 tonnes
Foldable and therefore also convenient for service trucks
Wide and robust frame made of high-strength steel
Precise and safe control by lowering
Built-in safety overload valve



	FJ40
Capacity (scissor/cylinder)	4,0 / 5,0 t
Min. height (scissor/cylinder)	55 / 410 mm
Max. height (scissor/cylinder)	455 / 730 mm
Frame length	810 mm
Handle length	830 mm
Frame height	100 mm
Width	250 mm
Weight	43 kg



AC OPTION - HYDRAULIC JACKS

GSI



Rubber cushion
For protection of car body

Fits:
DK20
DK20Q
DK13HLQ
DK20HLQ
T3



G4

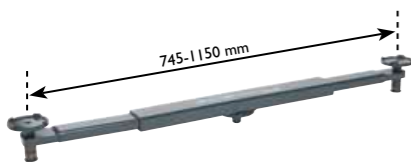


High quality pneumatic tyres
For easy transport and extra manoeuvrability – also on uneven floors

Fits:
DK40Q
DK60Q
DK100Q
DK120Q
DK50HLQ



T3



Capacity: 1,0 t

Cross beam adaptor
Lifts the car for change of both wheels at the same time
With telescopic arms, reach from 745 – 1150 mm

Fits:
DK20
DK20Q
DK13HLQ
DK20HLQ



FDK1 / FDK2



Extension FDK1
Extension for cars with high clearance (100 mm)

Fits:
DK20 / DK20Q
DK13HLQ / DK20HLQ

Extension FDK2
Extension for cars with high clearance (125 mm)

Fits:
DK40Q / DK60Q
DK100Q/DK120Q/DK50HLQ



AC AIR HYDRAULIC JACKS

B25-2



Capacity: 25 / 10 t
Max. height: 235 / 320 mm



Portable air hydraulic jack – ideal for service vans etc.

Low minimum height of only 160 mm and low weight of only 28 kg
Handy design - no loose tubes, handles or valves

Easy to operate – handle can be used for carrying, lifting, lowering and manoeuvring

Hard chromium plated piston rod for long life

Built-in safety overload valve

Hand-operated dead-man's control for optimum safety whilst lifting and lowering

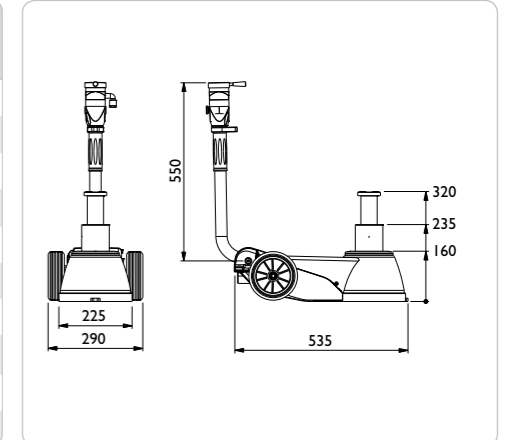
Transport locking device / wall bracket for both van and workshop (Option)

With 2 extensions (50/100 mm)



B25-2

Capacity	25 / 10 t
Min. height	160 mm
Max. height	235 / 320 mm
Frame length	535 mm
Handle length	550 mm
Width	225 mm
Width (with wheels)	290 mm
Air supply	9 - 12 bar
Air consumption	350 l/min
Weight	28 kg



AC AIR HYDRAULIC JACKS

25-1



Capacity: 25 t
Max. height: 345 mm

Single stage air hydraulic jack for heavy plant machinery and trucks

Minimum height of 220 mm
Designed for heavy-duty, intensive commercial use
Hard chromium plated piston rod for long life
Built-in safety overload valve
Hand-operated dead-man's control for optimum safety whilst lifting and lowering
Ergonomic handle with push buttons
With 2 extensions (50/100 mm)



25-1H



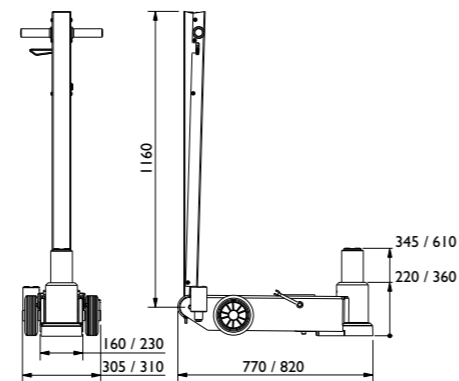
Capacity: 25 t
Max. height: 610 mm

Single stage air hydraulic jack for agricultural and contractors' machinery, trailers and other high clearance applications

Minimum height of 360 mm
Maximum height of 610 mm, the F250 (optional) extension offers a total extended height of 860 mm
Hard chromium plated piston rod for long life
Built-in safety overload valve
Hand-operated dead-man's control for optimum safety whilst lifting and lowering
Ergonomic handle with push buttons
With 2 extensions (50/100 mm)



	25-1	25-1H
Capacity	25 t	25 t
Min. height	220 mm	360 mm
Max. height	345 mm	610 mm
Frame length	770 mm	820 mm
Handle length	1160 mm	1160 mm
Width	160 mm	230 mm
Width (with wheels)	305 mm	310 mm
Air supply	9 - 10 bar	9 - 10 bar
Air consumption	350 l/min	350 l/min
Weight	62 kg	71 kg



AC AIR HYDRAULIC JACKS

25-2



Capacity: 25 / 10 t
Max. height: 275 / 380 mm

Versatile 2-stage air hydraulic jack for buses and trucks

Minimum height of 180 mm
Designed for heavy-duty, intensive commercial use
Hard chromium plated piston rod for long life
Built-in safety overload valve
Hand-operated dead-man's control for optimum safety whilst lifting and lowering
Ergonomic handle with push buttons
With 2 extensions (50/100 mm)



50-2



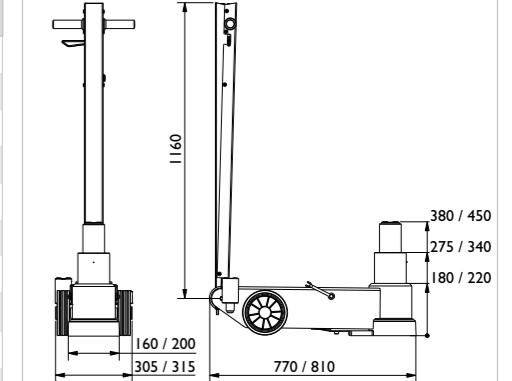
Capacity: 50 / 25 t
Max. height: 340 / 450 mm

2-stage air hydraulic jack for heavy buses and trucks

Minimum height of 220 mm
Designed for heavy-duty, intensive commercial use
Hard chromium plated piston rod for long life
Built-in safety overload valve
Hand-operated dead-man's control for optimum safety whilst lifting and lowering
Ergonomic handle with push buttons
With 2 extensions (50/100 mm)



	25-2	50-2
Capacity	25 / 10 t	50 / 25 t
Min. height	180 mm	220 mm
Max. height	275 / 380 mm	340 / 450 mm
Frame length	770 mm	810 mm
Handle length	1160 mm	1160 mm
Width	160 mm	200 mm
Width (with wheels)	305 mm	315 mm
Air supply	9 - 10 bar	9 - 10 bar
Air consumption	350 l/min	350 l/min
Weight	60 kg	80 kg



AC AIR HYDRAULIC JACKS

50-3



Capacity: 50 / 25 / 10 t
Max. height: 210 / 265 / 335 mm

3-stage air hydraulic jack for low buses and other low clearance vehicles

Minimum height of only 150 mm combined with a high lifting capacity

Telescopic cylinders ensure an excellent maximum lift together with a low closed height

Designed for heavy-duty, intensive commercial use

Built-in safety overload valve

Hand-operated dead-man's control for optimum safety whilst lifting and lowering

Ergonomic handle with push buttons

With 2 extensions (50/100 mm)



50-3H



Capacity: 50 / 25 / 10 t
Max. height: 340 / 450 / 560 mm

3-stage air hydraulic jack for high clearance vehicles

Minimum height of 220 mm and high maximum height of 560 mm

Designed for heavy-duty, intensive commercial use

Hard chromium plated piston rod for long life

Built-in safety overload valve

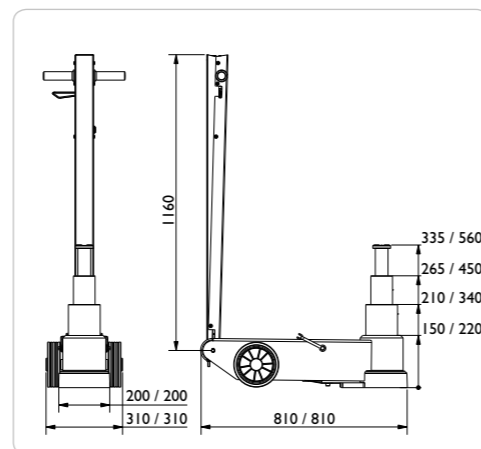
Hand-operated dead-man's control for optimum safety by lifting and lowering

Ergonomic handle with push buttons

For safety reasons extensions are not included



	50-3	50-3H
Capacity	50 / 25 / 10 t	50 / 25 / 10 t
Min. height	150 mm	220 mm
Max. height	210 / 265 / 335 mm	340 / 450 / 560 mm
Frame length	810 mm	810 mm
Handle length	1160 mm	1160 mm
Width	200 mm	200 mm
Width (with wheels)	310 mm	310 mm
Air supply	9 - 10 bar	9 - 10 bar
Air consumption	350 l/min	350 l/min
Weight	67 kg	77 kg



AC AIR HYDRAULIC JACKS

40-4



Capacity: 40 / 27 / 16 / 10 t
Max. height: 145 / 180 / 230 / 275 mm

4-stage air hydraulic jack for low buses and other low clearance vehicles

The lowest jack on the market with a minimum height of only 100 mm

Telescopic cylinders ensure a fast and safe 4-stage lift

Compact and short chassis for even the lowest vehicles

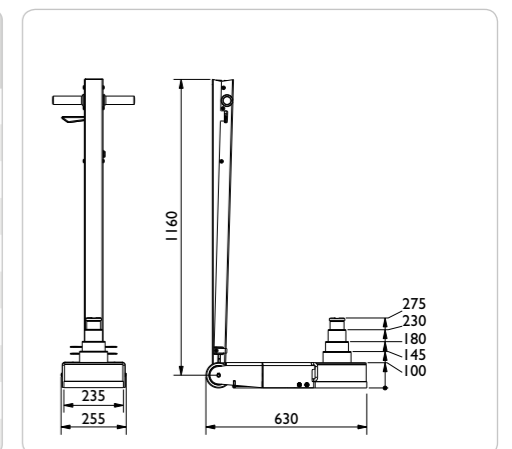
Hand-operated dead-man's control for optimum safety whilst lifting and lowering

Ergonomic handle with push buttons

With 2 extension (50/100 mm)



	40-4
Capacity	40 / 27 / 16 / 10 t
Min. height	100 mm
Max. height	145 / 180 / 230 / 275 mm
Frame length	630 mm
Handle length	1160 mm
Width	235 mm
Width (with wheels)	255 mm
Air supply	6 - 10 bar
Air consumption	215 l/min
Weight	54 kg



AC AIR HYDRAULIC JACKS

65-1



Capacity: 65 t
Max. height: 380 mm

Air hydraulic jack for heavy contractors' machinery

Minimum height of 245 mm with an extremely high capacity of 65 t
Designed for heavy-duty, intensive commercial use
Hard chromium plated piston rod for long life
Built-in safety overload valve
Hand-operated dead-man's control for optimum safety whilst lifting and lowering
Ergonomic handle with push buttons
Supplied with 2 extensions (100/200 mm) and pneumatic tyres



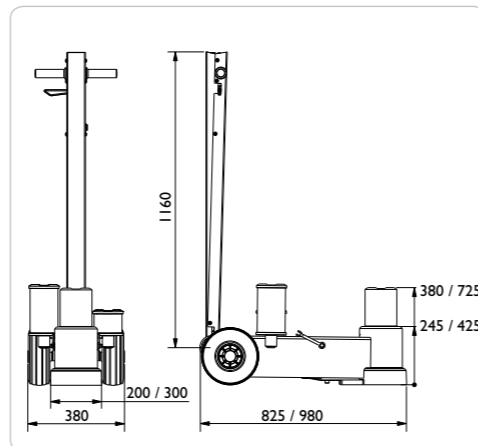
65-1H



Capacity: 65 t
Max. height: 725 mm

Air hydraulic jack for heavy duty applications with high clearance

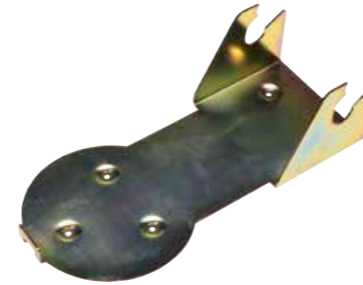
Minimum height of 425 mm
Maximum height of 725 mm and with extensions up to 1025 mm
Designed for heavy-duty, intensive commercial use
Hard chromium plated piston rod for long life
Built-in safety overload valve
Hand-operated dead-man's control for optimum safety whilst lifting and lowering
Ergonomic handle with push buttons
With 2 extensions (100/200 mm)



	65-1	65-1H
Capacity	65 t	65 t
Min. height	245 mm	425 mm
Max. height	380 mm	725 mm
Frame length	825 mm	980 mm
Handle length	1160 mm	1160 mm
Width	200 mm	300 mm
Width (with wheels)	380 mm	380 mm
Air supply	9 - 10 bar	9 - 10 bar
Air consumption	350 l/min	350 l/min
Weight	95 kg	138 kg

AC OPTION - AIR HYDRAULIC JACKS

SBB



Transport locking device and wall bracket for B25-2
Safe storage in service vans. Prevents damages in cases of emergency stops. Neat and practical wall mounting in the workshop.

Fits:
B25-2



F250



Extension
Increase the maximum height by 250 mm

Cannot be used together with other extensions

Fits:
B25-2
25-1
25-1H
25-2
50-2
50-3



FW



Capacity: 10 t

Jack saddle
Ø 145 mm
Suitable for lifting under bolts, differential gear etc.

Fits:
B25-2
25-1
25-1H
25-2
40-4
50-2
50-3



FWI



Capacity: 10 t

V-saddle
For lifting under different types of axles

Fits:
B25-2
25-1
25-1H
25-2
40-4
50-2
50-3



AC HEAVY DUTY JACKS

100-1L



Capacity: 100 t
Max. height: 595 mm

Heavy duty jacks for low clearance machinery in mining and construction industries

Min/max height at 460/595 mm

All steel, heavy duty chassis build to fit harsh environment

Large rubber tires allow easy positioning on challenging surfaces

Innovative chassis construction facilitates jack repair and even wheel changing on site

High ground clearance for clearing rail and rough terrain

Multiple position handle for easy tilt back and moving

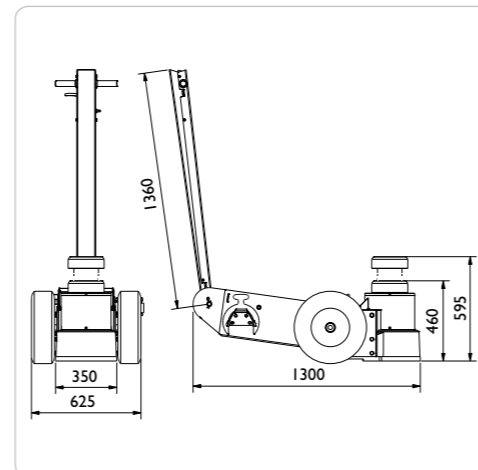
Handle with dead-man's release for optimum safety during lifting and lowering



150-1L



Capacity: 150 t
Max. height: 595 mm



	100-1L	150-1L
Capacity	100 t	150 t
Min. height	460 mm	460 mm
Max. height	595 mm	595 mm
Frame length	1300 mm	1300 mm
Handle length	1360 mm	1360 mm
Width	350 mm	350 mm
Width (with wheels)	625 mm	625 mm
Air supply	8 - 12 bar	8 - 12 bar
Air consumption	1200 l/min	1200 l/min
Weight	355 kg	355 kg
Ground clearance	40 mm	40 mm

AC HEAVY DUTY JACKS

100-I



Capacity: 100 t
Max. height: 1120 mm

Heavy duty jacks for mining and construction industries

Min/max height at 720/1120 mm

All steel, heavy duty chassis build to fit harsh environment

Large rubber tires allow easy positioning on challenging surfaces

Innovative chassis construction facilitates jack repair and even wheel changing on site

High ground clearance for clearing rail and rough terrain

Multiple position handle for easy tilt back and moving

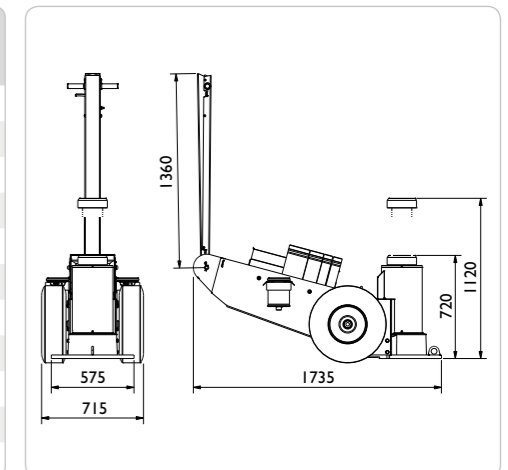
Handle with dead-man's release for optimum safety during lifting and lowering



150-I



Capacity: 150 t
Max. height: 1120 mm



	100-I	150-I
Capacity	100 t	150 t
Min. height	720 mm	720 mm
Max. height	1120 mm	1120 mm
Frame length	1735 mm	1735 mm
Handle length	1360 mm	1360 mm
Width	575 mm	575 mm
Width (with wheels)	715 mm	715 mm
Air supply	8 - 12 bar	8 - 12 bar
Air consumption	1200 l/min	1200 l/min
Weight	510 kg	510 kg
Ground clearance	95 mm	95 mm

AC HEAVY DUTY JACKS

100-1H



Capacity: 100 t
Max. height: 1620 mm

Heavy duty jacks for high clearance machinery in mining and construction industries

Min/max height at 970/1620 mm

All steel, heavy duty chassis build to fit harsh environment

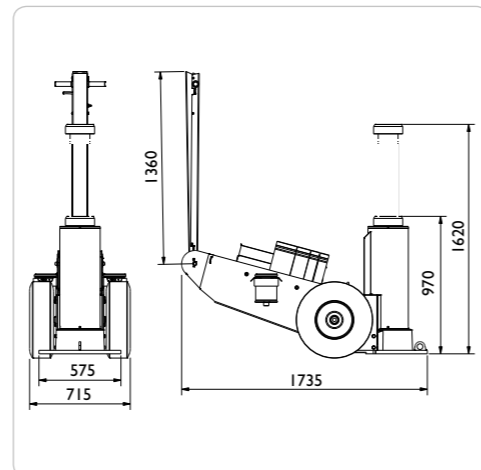
Large rubber tires allow easy positioning on challenging surfaces

Innovative chassis construction facilitates jack repair and even wheel changing on site

High ground clearance for clearing rail and rough terrain

Multiple position handle for easy tilt back and moving

Handle with dead-man's release for optimum safety during lifting and lowering



150-1H



Capacity: 150 t
Max. height: 1620 mm

	100-1H	150-1H
Capacity	100 t	150 t
Min. height	970 mm	970 mm
Max. height	1620 mm	1620 mm
Frame length	1735 mm	1735 mm
Handle length	1360 mm	1360 mm
Width	575 mm	575 mm
Width (with wheels)	715 mm	715 mm
Air supply	8 - 12 bar	8 - 12 bar
Air consumption	1200 l/min	1200 l/min
Weight	575 kg	575 kg
Ground clearance	95 mm	95 mm

AC ACCESSORIES - HEAVY DUTY JACKS

FHD100 / FHD200



Extension - FHD100

Increases lifting height by 100 mm

Extension - FHD200

Increases lifting height by 200 mm

Fits:
All models



HHD



Extension holder

Allows for extensions to be stored on the side of the jack

Fits:
All models



SB65 / SB100 / SB150



Locking ring - SB65

65 mm height

Fits: All models

Locking ring - SB100

100 mm height

Fits: 100-1 / 150-1
100-1H / 150-1H

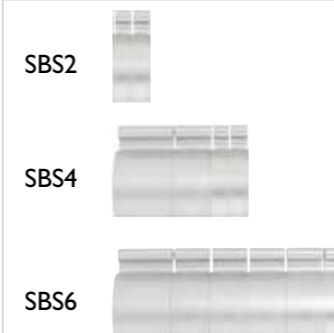
Locking ring - SB150

150 mm height

Fits: 100-1 / 150-1
100-1H / 150-1H



SBS



SBS2

Set of 2 locking rings incl. holder for model 100-1L / 150-1L

SBS4

Set of 4 locking rings incl. holder for model 100-1 / 150-1

SBS6

Set of 6 locking rings incl. holder for model 100-1H / 150-1H



AC JACKING BEAMS

SD20L / SD26L



Capacity: 2,0 / 2,6 t
Stroke: 250 mm

Hand hydraulic jacking beam for passenger cars and vans

Quick and efficient lifting due to manual double acting pump

Low closed height of only 180 mm makes it suitable for vehicles with a low clearance

Flexible top support beam can be extended up to 1610 mm

Unique height adjustable support arm system – designed to fit all current lifts and pits (please order separately)

Two-hand lowering operation with dead man's release, automatic safety locking device and overload valve for optimum safety

Supplied with 3 extension sets (10/40/85 mm) and rubber cushion for protection of car body



SD20PHL / SD26PHL



Capacity: 2,0 / 2,6 t
Stroke: 250 mm

Air hydraulic jacking beam for passenger cars and vans

Quick and efficient lifting due to reliable and noiseless pump

Low closed height of only 180 mm makes it suitable for vehicles with a low clearance

Flexible top support beam can be extended up to 1610 mm

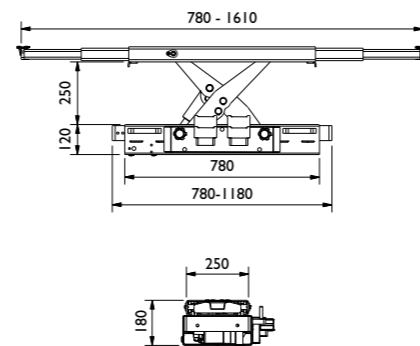
Unique height adjustable support arm system – designed to fit all current lifts and pits (please order separately)

Two-hand lowering operation with dead man's release, automatic safety locking device and overload valve for optimum safety

Supplied with 3 extension sets (10/40/85 mm) and rubber cushion for protection of car body



	SD20L	SD26L	SD20PHL	SD26PHL
Capacity	2,0 t	2,6 t	2,0 t	2,6 t
Stroke	250 mm	250 mm	250 mm	250 mm
Min. height	180 mm	180 mm	180 mm	180 mm
Telescopic arms	780 - 1610 mm	780 - 1610 mm	780 - 1610 mm	780 - 1610 mm
Width (+ support arms)	780 - 1180 mm	780 - 1180 mm	780 - 1180 mm	780 - 1180 mm
Lifting frame (height)	120 mm	120 mm	120 mm	120 mm
Lifting frame (depth)	250 mm	250 mm	250 mm	250 mm
Air supply			6 - 10 bar	6 - 10 bar
Air consumption			400 - 700 l/min	400 - 700 l/min
Weight (+ support arms)	105 kg	105 kg	110 kg	110 kg



- When ordering fill out spec. form page 64/65

AC JACKING BEAMS

SD20PHL-A / SD26PHL-A



Capacity: 2,0 / 2,6 t
Stroke: 250 mm

Automatic air hydraulic jacking beam for inspections centres and workshops with many lifting operations

Individual joysticks control of lifting arms to avoid time consuming working operations

Remote control activates lowering and retraction of lifting arms to closed position

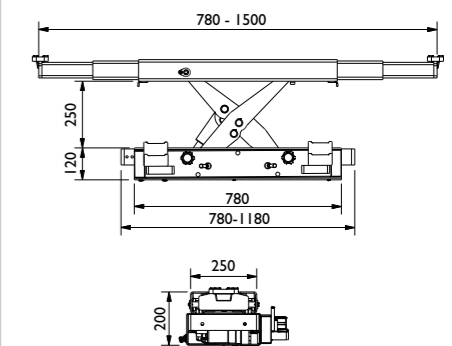
Placing the remote control next to the lift control panel ensures safe operation and prevents unnecessary steps

Unique height adjustable support arm system – designed to fit all current lifts and pits (please order separately)

Supplied with 3 extension sets (10/40/85 mm) and rubber cushion



	SD20PHL-A	SD26PHL-A
Capacity	2,0 t	2,6 t
Stroke	250 mm	250 mm
Min. height	200 mm	200 mm
Telescopic arms	780 - 1500 mm	780 - 1500 mm
Width (without support arms)	780 - 1180 mm	780 - 1180 mm
Lifting frame (height)	120 mm	120 mm
Lifting frame (depth)	250 mm	250 mm
Air supply	6 - 10 bar	6 - 10 bar
Air consumption	400 - 700 l/min	400 - 700 l/min
Weight (without support arms)	120 kg	120 kg



- When ordering fill out spec. form page 64/65

AC JACKING BEAMS

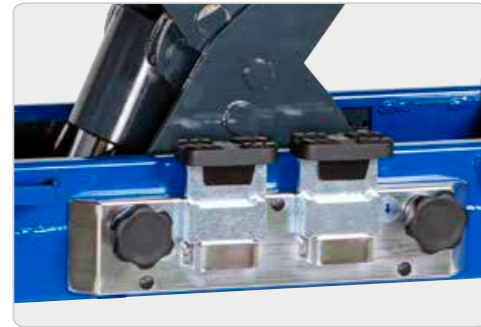
SD32PHL



Capacity: 3,2 t
Stroke: 250 mm

Air hydraulic jacking beam for passenger cars, vans and trucks

Strong and robust design makes it ideal for lifting heavy vehicles
Low closed height of only 230 mm
Flexible top support beam can be extended up to 1610 mm
Unique height adjustable support arm system – designed to fit all current lifts and pits (please order separately)
Two-hand lowering operation with dead man's release, automatic safety locking device and overload valve for optimum safety
Supplied with 3 extension sets (10/40/85 mm) and rubber cushion



SD40PHL



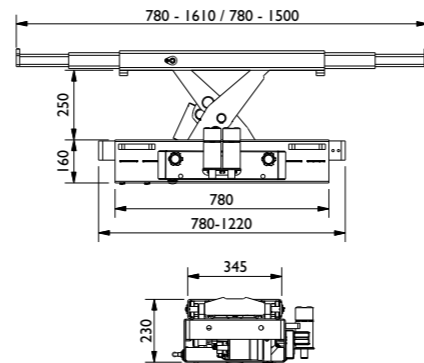
Capacity: 4,0 t
Stroke: 250 mm

Air hydraulic jacking beam for passenger cars, vans and trucks

Strong and robust design makes it ideal for lifting heavy vehicles
Low closed height of only 230 mm
Flexible top support beam can be extended up to 1500 mm
Unique height adjustable support arm system – designed to fit all current lifts and pits (please order separately)
Two-hand lowering operation with dead man's release, automatic safety locking device and overload valve for optimum safety
Supplied with 2 extension sets (50/100 mm)



	SD32PHL	SD40PHL
Capacity	3,2 t	4,0 t
Stroke	250 mm	250 mm
Min. height	230 mm	230 mm
Telescopic arms	780 - 1610 mm	780 - 1500 mm
Width (without support arms)	780 - 1220 mm	780 - 1220 mm
Lifting frame (height)	160 mm	160 mm
Lifting frame (depth)	345 mm	345 mm
Air supply	6 - 10 bar	6 - 10 bar
Air consumption	400 - 700 l/min	400 - 700 l/min
Weight (without support arms)	175 kg	175 kg



AC OPTION - JACKING BEAMS

HSD / HSD-A



Air-line connection - HSD

Set for jacking beam
Fits:
SD20PHL
SD26PHL
SD32PHL
SD40PHL

Air-line connection - HSD-A

Set for automatic jacking beam
Fits:
SD20PHL-A
SD26PHL-A



FSD1 / FSD4



Extension - FSD1

Increases the lifting height by 130 mm
(Order 2 units)

Extension - FSD4

Increases the lifting height by 210 mm
(Order 2 units)

Fits:
SD20L, SD26L,
SD20PHL, SD26PHL, SD32PHL,
SD20PHL-A, SD26PHL-A



FSD2 / FSD3



Rubber support - FSD2

Block for protection of car body (40 mm)
(Order 2 units)

Fits:
All jacking beams

Rubber support - FSD3
Block for protection of car body (80 mm)
(Order 2 units)

Fits:
All jacking beams



FSD5



Capacity: 2,0 t

Saddle with spindle

Increases the lifting height by 106-235 mm.
(Order 2 units)

Fits:
SD20L
SD26L
SD20PHL
SD26PHL
SD20PHL-A
SD26PHL-A



AC OPTION - JACKING BEAMS

FSD6 / FSD7



Capacity: 2,0 t

Adjustable saddle - FSD6
Increases the lifting height by 32-92 mm
(Order 2 units)

Extension - FSD7
For FSD6 increases the lifting height by 60 mm
(Order 2 units)

Fits:
SD20L / SD26L
SD20PHL / SD26PHL
SD32PHL



GSI



Rubber cushion
Can be used in combination with FSD5 and FSD6
For protection of car body
(Order 2 units)

Fits:
FSD5
FSD6



GS2



Rubber cushion
Rubber cushion for 10 mm standard extension
(Order 2 units)

Fits:
SD20L
SD26L
SD20PHL
SD26PHL
SD32PHL
SD20PHL-A
SD26PHL-A



FW / FWI



Saddle - FW
Suitable for lifting over drain plugs, differential gear etc.
(Ø 145 mm)
(Order 2 units)

V-saddle - FWI
For lifting under various axles
(Order 2 units)

Fits:
SD40PHL



AC HEAVY DUTY JACKING BEAMS FOR LIFTS

FL60-I / FLI20-I FLI60-I / FL200-I



Capacity: 6 / 12 / 16 / 20 t
Stroke: 200 mm

Standard air hydraulic single ram jacking beam

Rapid and precise air hydraulic unit with high speed ram travel

Simple modern design with control panel at ergonomical correct working height

Unique height adjustable support arm system – designed to fit all current lifts¹
(please order separately)

Frame height is adjusted and set to the customers individual specifications

Transversely sliding ram

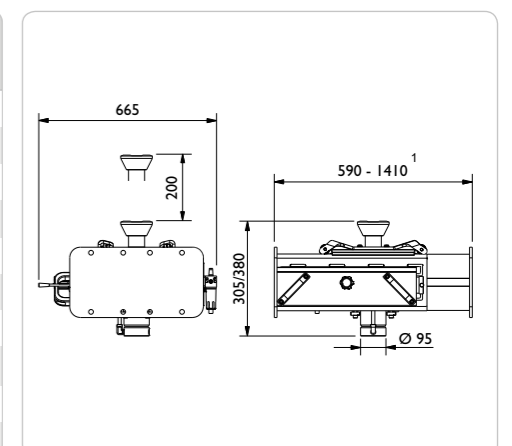
Dead man's release and safety overload valve for optimum safety

Supplied with 1 x 100 mm extension

When ordering fill out spec. form (page 64)



	FL60-I	FLI20-I	FLI60-I	FL200-I
Capacity	6 t	12 t	16 t	20 t
Stroke	200 mm	200 mm	200 mm	200 mm
Min. height	305 mm	380 mm	380 mm	380 mm
Max. height	505 mm	580 mm	580 mm	580 mm
Width ¹	590-1410 mm	590-1410 mm	590-1410 mm	590-1410 mm
Depth	665 mm	665 mm	665 mm	665 mm
Air supply	8 - 12 bar	8 - 12 bar	8 - 12 bar	8 - 12 bar
Air consumption	350 l/min	350 l/min	350 l/min	350 l/min
Weight	200 kg	200 kg	200 kg	200 kg



¹ Framewidth: 590-890 mm / 850-1150 mm / 1110-1410 mm

- The capacity of the jacking beam cannot exceed 0,66 x the lift capacity

AC HEAVY DUTY JACKING BEAMS FOR LIFTS

FL60-2 / FLI20-2 FLI60-2 / FL200-2



Capacity: 6 / 12 / 16 / 20 t
Stroke: 200 mm

Air hydraulic twin ram jacking beam

2 individually controlled rams offer safe and balanced lifting
Transversely sliding rams
Rapid and precise air hydraulic unit with high speed ram travel

Simple modern design with control panel at ergonomical correct working height

Unique height adjustable support arm system – designed to fit all current lifts¹ (please order separately)

Frame height is adjusted and set to the customers individual specifications

Dead man's release and safety overload valve for optimum safety
When ordering fill out spec. form (page 64)



FL60-2M / FLI20-2M FLI60-2M / FL200-2M



Capacity: 6 / 12 / 16 / 20 t
Stroke: 200 mm

Air hydraulic twin ram jacking beam, with an automatic mechanical safety lock

2 individually controlled rams offer safe and balanced lifting

The mechanical safety locks offers maximum operator safety against unintentional lowering

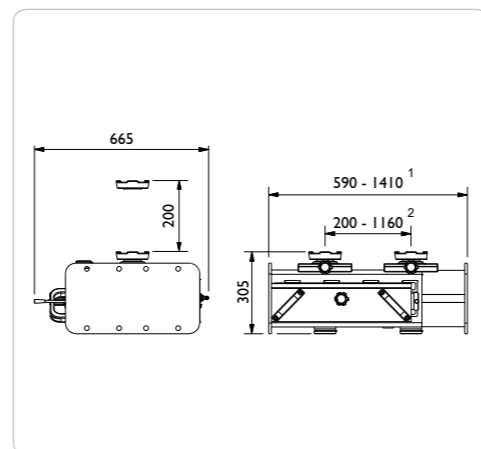
Transversely sliding rams

Rapid and precise air hydraulic unit with high speed ram travel

Simple modern design with control panel at ergonomical working height

Unique height adjustable support arm system – designed to fit all current lifts¹ (please order separately)

Dead man's release and safety overload valve for optimum safety
When ordering fill out spec. form (page 64)



	FL60-2 FL60-2M	FLI20-2 FLI20-2M	FLI60-2 FLI60-2M	FL200-2 FL200-2M
Capacity	6 t	12 t	16 t	20 t
Stroke	200 mm	200 mm	200 mm	200 mm
Min. height	305 mm	305 mm	305 mm	305 mm
Max. height	505 mm	505 mm	505 mm	505 mm
Width ¹	590-1410 mm	590-1410 mm	590-1410 mm	590-1410 mm
Depth	665 mm	665 mm	665 mm	665 mm
Lifting points ²	200-1160 mm	200-1160 mm	200-1160 mm	200-1160 mm
Air supply	8 - 12 bar	8 - 12 bar	8 - 12 bar	8 - 12 bar
Air consumption	350 l/min	350 l/min	350 l/min	350 l/min
Weight	202 kg	202 kg	202 kg	202 kg

¹ Framewidth: 590-890 mm / 850-1150 mm / 1110-1410 mm

² Distance between lifting points: 200-640 mm / 200-990 mm / 200-1160 mm

- The capacity of the jacking beam cannot exceed 0,66 x the lift capacity

- Supplied with 2 x 100 mm extensions

AC PIT JACKS

GD100-I / GD150-I / GD200-I



Capacity: 10 / 15 / 20 t
Stroke: 800 mm

Standard air hydraulic single ram pit jack

Rapid and precise air hydraulic unit with high speed ram travel

Simple modern design with control panel at ergonomical correct working height

Unique height adjustable support arm system – designed to fit all current pits¹ (please order separately)

Frame height is adjusted and set to the customers individual specifications

Fitted with leaf spring support bearings for easy glide transversing ram

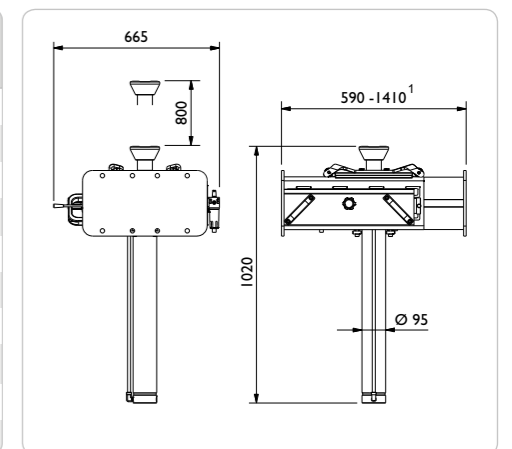
Comprehensive option range: cross beam, gearbox saddle, support bridge etc.

When ordering fill out spec. form (page 65)



	GD100-I	GD150-I	GD200-I
Capacity	10 t	15 t	20 t
Stroke	800 mm	800 mm	800 mm
Min. height	1020 mm	1020 mm	1020 mm
Max. height	1820 mm	1820 mm	1820 mm
Width ¹	590-1410 mm	590-1410 mm	590-1410 mm
Depth	665 mm	665 mm	665 mm
Air supply	8 - 12 bar	8 - 12 bar	8 - 12 bar
Air consumption	350 l/min	350 l/min	350 l/min
Weight	220 kg	220 kg	220 kg

¹ Framewidth: 590-890 mm / 850-1150 mm / 1110-1410 mm



GD100-2 / GD150-2 / GD200-2



Capacity: 10 / 15 / 20 t
Stroke: 420 mm

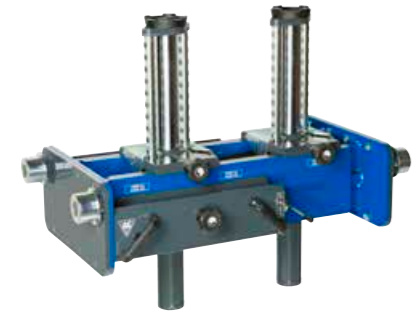
Air hydraulic twin ram pit jack

2 individually controlled rams offer safe and balanced lifting
Rapid and precise air hydraulic unit with high speed ram travel
Simple modern design with control panel at ergonomical correct working height
Transversely sliding rams
Unique height adjustable support arm system – designed to fit all current pits¹ (please order separately)
Frame height is adjusted and set to the customers individual specifications
Comprehensive option range: cross beam, support bridge etc.
Supplied with 2 x100 mm extensions

When ordering fill out spec. form (page 65)



GD100-2M / GD150-2M / GD200-2M

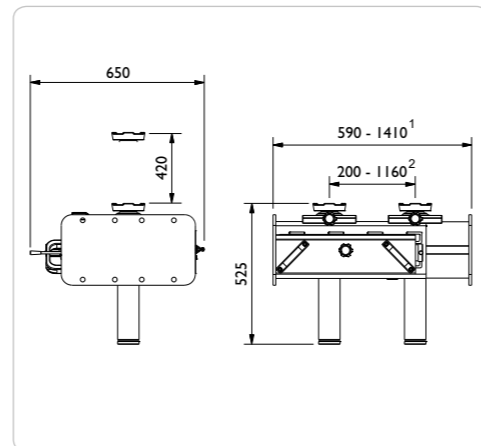


Capacity: 10 / 15 / 20 t
Stroke: 420 mm

Air hydraulic twin ram pit jack, with an automatic mechanical safety lock

2 individually controlled rams offer safe and balanced lifting
The mechanical safety locks offers maximum operator safety against unintentional lowering
Rapid and precise air hydraulic unit with high speed ram travel
Simple modern design with control panel at ergonomical working height
Transversely sliding rams
Unique height adjustable support arm system – designed to fit all current pits¹ (please order separately)
Comprehensive option range: cross beam, support bridge etc.
Supplied with 2 x100 mm extensions

When ordering fill out spec. form (page 65)



¹ Framewidth: 590-890 mm / 850-1150 mm / 1110-1410 mm

² Distance between lifting points: 200-640 mm / 200-990 mm / 200-1160 mm

GDT150-I

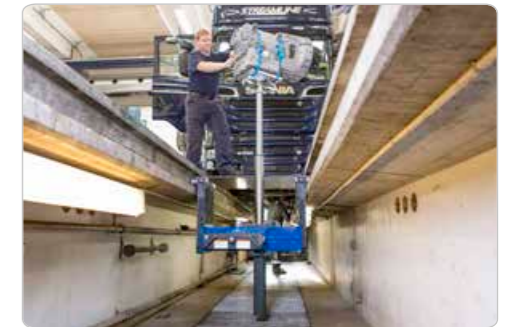


Capacity: 15 / 15 t
Stroke: 1280 mm

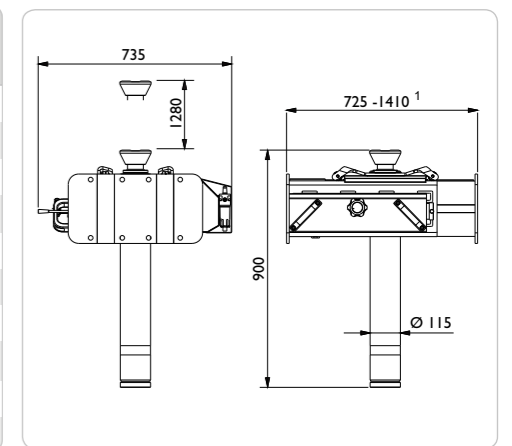
Telescopic air hydraulic pit jack

Lowered design doubles usability compared to standard pit jacks
Low construction height with a long stroke
Rapid and precise air hydraulic unit with high speed ram travel
Simple modern design with control panel at ergonomic correct working height
Adjustable frame designed to fit all pits
Transversal sliding ram – locking at 800 kg
Dead man's release and safety overload valve for optimum safety

When ordering fill out spec. form (page 65)



GDT150-I	
Capacity	15 / 15 t
Stroke	1280 mm
Min. height	900 mm
Max. height	2180 mm
Width ¹	725-1410 mm
Depth	735 mm
Air supply	8 - 12 bar
Air consumption	350 l/min
Weight	250 kg



¹ Frame width: 725-890 mm / 850-1150 mm / 1110-1410 mm

AC PIT JACKS

GGDI 150F



Capacity: 15 / 15 t
Stroke: 1285 mm

Air hydraulic floor pit jack with telescopic cylinder

Flexible pit jack for use both in pits and under vehicle lifts

Suitable for all traditional lifting jobs

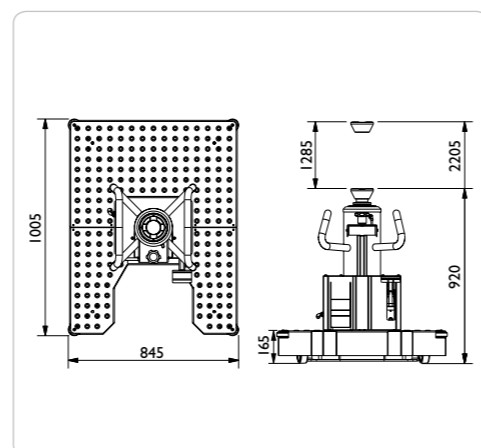
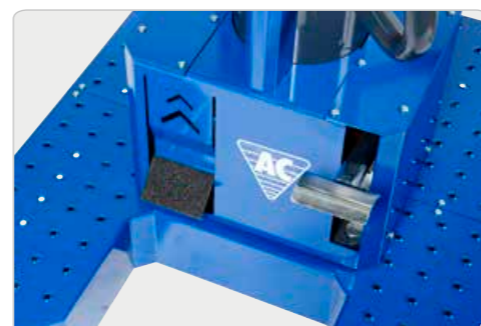
Ideal for dismounting and re-mounting of gearboxes

Built-in manual foot pump for easy and precise adjustment

Rapid and precise air hydraulic unit with high speed ram travel up and down

Spring loaded wheel support prevents unintended movements when lifting more than 800 kg

Dead man's release and safety overload valve for optimum safety



AC PIT JACKS

GGDI 150U



Capacity: 15 / 15 t
Stroke: 1285 mm

Air hydraulic floor pit jack with traversing telescopic cylinder

Flexible pit jack for use in pit or under a lift

Traversing cylinder ensures a wide reach under the vehicle and enables the mechanic to move freely back and forth in the pit

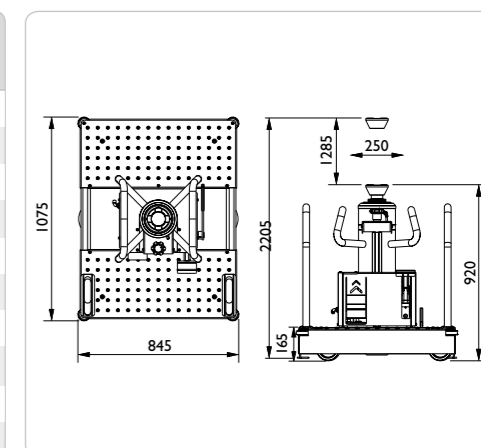
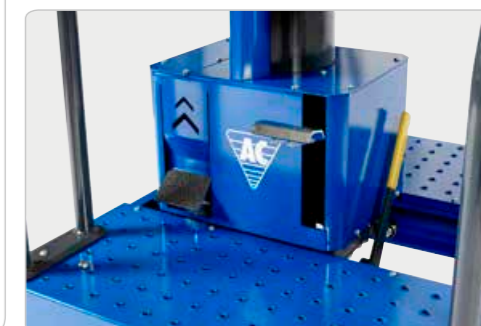
Ideal for dis- and remounting of gearboxes due to telescopic cylinder

Built-in manual foot pump for easy and precise adjustment

Rapid and precise air hydraulic unit with high speed ram travel up and down

Base frame wheels fitted with bearings for optimum manoeuvrability

Spring loaded wheel support prevents unintended movements when lifting more than 800 kg



GGDI 150F

Capacity	15 / 15 t
Stroke	1285 mm
Min. height	920 mm
Max. height	2205 mm
Baseframe width	845 mm
Baseframe depth	1005 mm
Cylinder diameter	Ø 60 mm
Air supply	8,5 - 12 bar
Air consumption	350 l/min
Weight	220 kg

GGDI 150U

Capacity	15 / 15 t
Stroke	1285 mm
Min. height	920 mm
Max. height	2205 mm
Traversing cylinder	250 mm
Basewidth / Basedepth	845 / 1075 mm
Cylinder diameter	Ø 60 mm
Air supply	8,5 - 12 bar
Air consumption	350 l/min
Weight	250 kg

AC PIT JACKS

GGDI 50S



Capacity: 15 / 15 t
Stroke: 1285 mm

Air hydraulic floor pit jack running in rails. Slim and compact design with traversing cylinder

Traversing cylinder ensures a wide reach under the vehicle and enables the mechanic to move freely back and forth in the pit

Base frame wheels fitted with bearings for optimum manoeuvrability

Ideal for dismantling and re-mounting of gearboxes

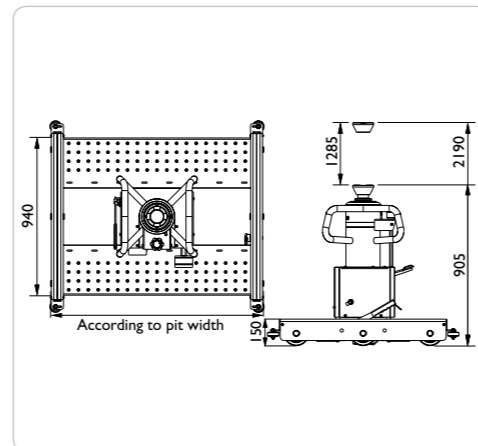
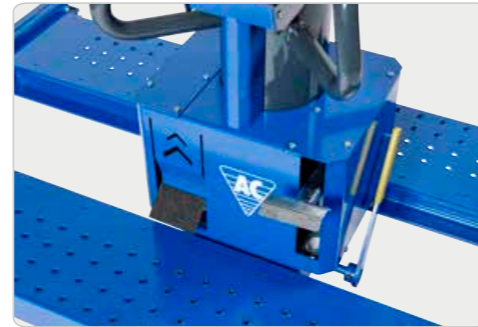
Rapid and precise air hydraulic unit with high speed ram travel

Built-in manual foot pump for easy and precise adjustment

Foot operated leaving hands free

Dead man's release and overload valve for optimum safety

When ordering fill out spec. form (page 65)



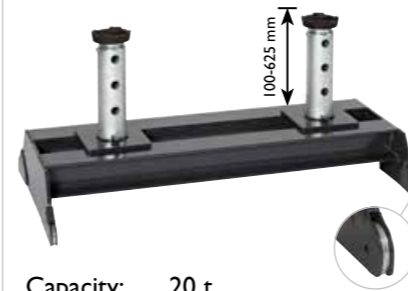
GGDI 50S

Capacity	15 / 15 t
Stroke	1285 mm
Min. height	905 mm
Max. height	2190 mm
Baseframe width	According to pit width
Baseframe depth	940 mm
Cylinder diameter	Ø 60 mm
Air supply	8,5 - 12 bar
Air consumption	350 l/min
Weight	285 kg

• The pit must be equipped with rails (100 x 100 x 10 mm)

AC OPTION – HEAVY DUTY JACKING BEAMS & PIT JACKS

AB



Capacity: 20 t

Support bridge

For safe and stable support of the vehicle

The open frame offers optimum traversing cylinder mobility

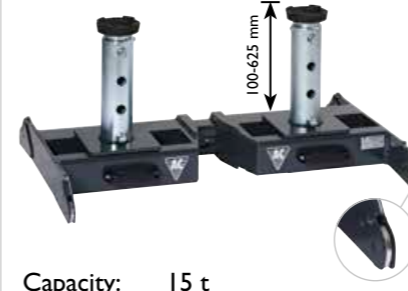
With leaf spring wheels for easy transport along the pit

Usable with various extensions and saddles: FG100, FG200, FW2 and US

When ordering fill out spec. form (page 65)



ABT



Capacity: 15 t

Telescopic support bridge

Flexible support bridge can be used in different pits because of the adjustable width

Opening in the middle for optimum flexibility when manoeuvring the jack

With leaf spring wheels for easy transport along the pit

Usable with various extensions and saddles: FG100, FG200, FW2 and US

When ordering fill out spec. form (page 65)



S200



Capacity: 20 t

Integrated safety stand

Mechanical locking of the load prevents unintended lowering

Adjustable in 6 positions

Increases the minimum height of the pit jack by 65 mm

Fits:
GD100-I / GD150-I / GD200-I



AS3



Capacity: 1 t
Dimension: 540x385x110 mm

Gearbox saddle

10° tilt in all directions for accurate dismantling and re-mounting of gearboxes

Low minimum height for wide range of applications

Fitted with 2 straps and 4 rubber cushions with magnets

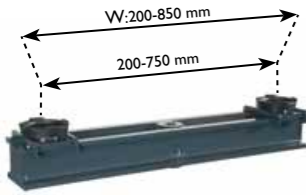
Weight: 24 kg

Fits:
GDxxx-I / GDT150-I
GGD150F / GGD150U / GGD150S



AC OPTION – HEAVY DUTY JACKING BEAMS & PIT JACKS

T4-1 / T4-2 / T4-1W / T4-2W



Capacity: 20 t / W:15 t
 Length:
 T4-1 / T4-2 920 mm
 T4-1W / T4-2W 1020 mm

Cross beam adaptor

Ideal for supporting axle, whilst allowing work to be done on the differential gear

Offers increased safety – divides the load over 2 lifting points

Usable with various extensions and saddles: FG100, FG200, FW2, US

T4-1W Increases min. height by 100 mm
 T4-2W Increases min. height by 145 mm

Fits:
 All models ÷ FLxx-1



T5-1 / T5-2



Capacity: 15-11,5 t
 Length: 1060-1635 mm

Flexible cross beam adaptor with extra long reach

Ideal for supporting axle, whilst allowing work to be done on the differential gear

Offers increased safety – divides the load over 2 lifting points

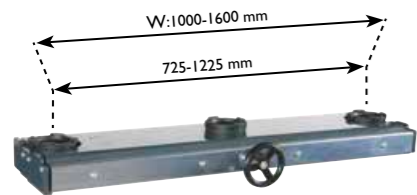
Usable with various extensions and saddles: FG100, FG200, FW2, US

T5-1 Increases min. height by 95 mm
 T5-2 Increases min. height by 140 mm

Fits:
 All models ÷ FLxx-1



T6-1 / T6-2 / T6-1W / T6-2W



Capacity: 13 t
 Length:
 T6-1 / T6-2 850-1350 mm
 T6-1W / T6-2W 1120-1720 mm

Cross beam adaptor

Hand wheel on the cross beam for easy and precise adjustment of lifting saddles without moving from the pit – ideal for inspection centres

Usable with various extensions and saddles: FG100, FG200, FW2, US

T6-1W Increases min. height by 55 mm
 T6-2W Increases min. height by 90 mm

Fits:
 All models ÷ FLxx-1



LB



Capacity: 20 t

Diff beam

Allows use of both rams to lift at one point

Fits:
 FL60-2 / FL120-2
 FL160-2 / FL200-2
 FL60-2M / FL120-2M
 FL160-2M / FL200-2M
 GD100-2 / GD150-2 / GD200-2
 GD100-2M / GD150-2M / GD200-2M



AC OPTION – HEAVY DUTY JACKING BEAMS & PIT JACKS

FLTR



Trolley

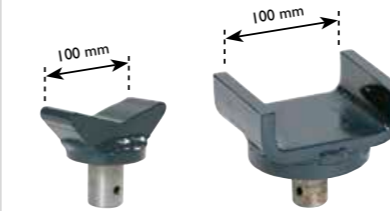
Practical trolley – designed for mounting and dismounting of heavy duty jacking beams on lifts

Fitted with revolving wheels for easy manoeuvrability

Fits:
 FL60-1 / FL120-1
 FL160-1 / FL200-1
 FL60-2 / FL120-2
 FL160-2 / FL200-2



FW2 / US



Capacity: 10 t

V-saddle - FW2

Suitable for lifting under various axles

U-saddle - US
 Suitable for lifting various chassis profiles

Fits:
 All models



FG100 / FG200



Capacity: 10 t

Extension - FG100

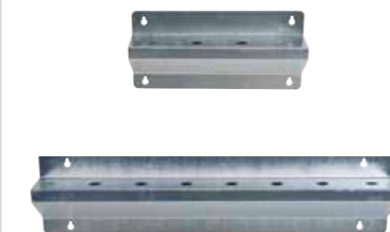
Increases the lifting height by 100 mm

Extension - FG200
 Increases the lifting height by 200 mm

Fits:
 FL60-2 / FL120-2
 FL160-2 / FL200-2
 GD100-1 / GD150-1 / GD200-1
 GD100-2 / GD150-2 / GD200-2



VB1 / VB2



Wall bracket - VB1

Robust wall bracket for storage of extensions and saddles (4 pcs.)

Wall bracket - VB2
 Robust wall bracket for storage of extensions and saddles (8 pcs.)



AC OPTION – HEAVY DUTY JACKING BEAMS & PIT JACKS

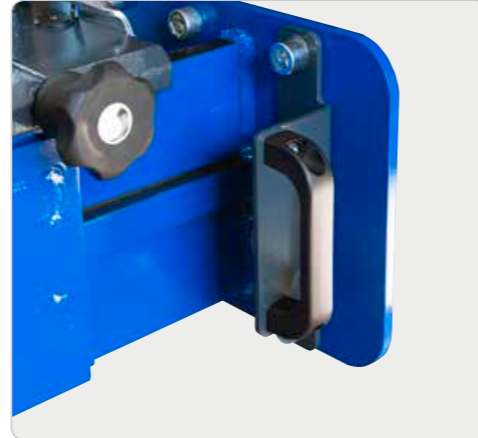
GR



Handle

Extra handle makes it easier to push the jacking beam or pit jack in a wide pit

Fits:
FL All models
GD All models
GDT



AC FOLD-AWAY WORKSHOP CRANES

WJN5 / WJN10



Capacity: 0,55 / 1,10 t

Hydraulic workshop crane for auto workshops and service vans

Foldable within seconds for quick and easy storage

When folded the crane takes up a minimum of space on the workshop floor

Jib arm with large lifting capacity – even in 5th position
* See capacity table

Hard chromium plated piston rod and pump piston for long life

Built-in safety overload valve

Fitted with 2 castors and 2 fixed wheels for easy manoeuvrability even with maximum load

Lifting hook pivots 360°

Hand operated dead man's release for optimum safety whilst lowering



WJN5EUR / WJN10EUR



Capacity: 0,55 / 1,10 t

Hydraulic workshop crane with parallel legs for pallets

Foldable within seconds for quick and easy storage

When folded the crane takes up a minimum of space on the workshop floor

Jib arm with large lifting capacity – even in 5th position
* See capacity table

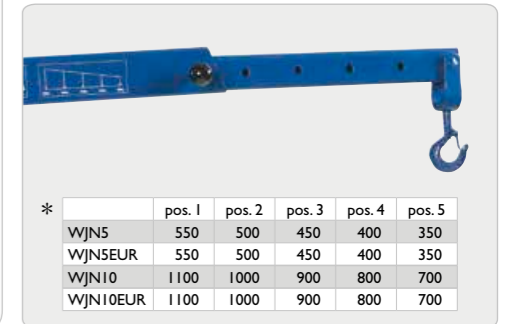
Hard chromium plated piston rod and pump piston for long life

Built-in safety overload valve

Fitted with 2 castors and 2 fixed wheels for easy manoeuvrability even with maximum load

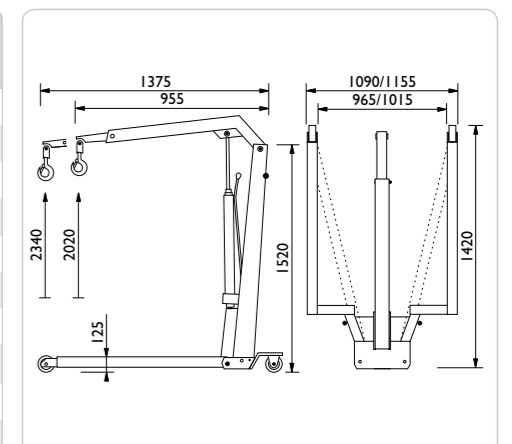
Lifting hook pivots 360°

Hand operated dead man's release for optimum safety whilst lowering



* pos. 1	pos. 2	pos. 3	pos. 4	pos. 5	
WJN5	550	500	450	400	350
WJN5EUR	550	500	450	400	350
WJN10	1100	1000	900	800	700
WJN10EUR	1100	1000	900	800	700

	WJN5	WJN10	WJN5EUR	WJN10EUR
Capacity	0,55 t	1,10 t	0,55 t	1,10 t
Lifting height	2020 - 2340 mm	2020 - 2340 mm	2020 - 2340 mm	2020 - 2340 mm
Jib arm	955 - 1375 mm	955 - 1375 mm	955 - 1375 mm	955 - 1375 mm
Frame height	125 mm	125 mm	125 mm	125 mm
Frame length	1420 mm	1420 mm	1420 mm	1420 mm
Height	1520 mm	1520 mm	1520 mm	1520 mm
Inner width	955 mm	985 mm	975 mm	1015 mm
Frame width	1080 mm	1110 mm	1100 mm	1140 mm
Weight	75 kg	95kg	75 kg	95 kg



AC HEAVY DUTY COMMERCIAL CRANES

WN11 / WN15



Capacity: 1,1 / 1,5 t

Hydraulic workshop crane for auto workshops and industry

Commercial crane fitted with hard chromium plated piston rod and pump piston for longer life

Jib arm with large lifting capacity – even in 5th position
* See capacity table

Pump rotates 360° for excellent operation in all working conditions

Built-in safety overload valve

Wheels revolve 360° for easy manoeuvrability even with maximum load

Lifting hook pivots 360°

Hand operated dead man's release for optimum safety whilst lowering

Inner frame width enables use with Euro pallets



WN20 / WN25



Capacity: 2,0 / 2,5 t

Hydraulic workshop crane for auto workshops and industry

Commercial crane fitted with hard chromium plated piston rod and pump piston for long life

Jib arm with large lifting capacity – even in 5th position
* See capacity table

Pump rotates through 360° for excellent operation in all working conditions

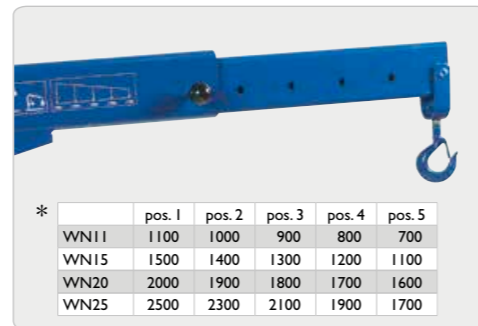
Built-in safety overload valve

Wheels revolve 360° for easy manoeuvrability even with maximum load

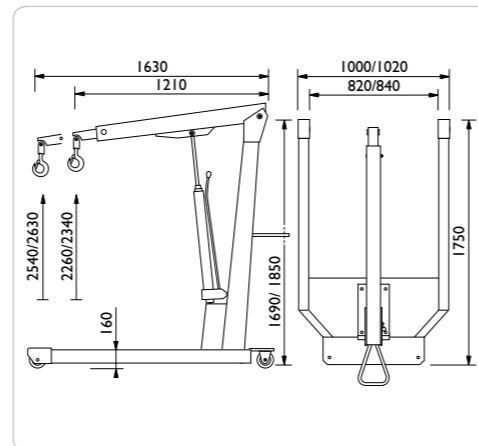
Lifting hook pivots 360°

Hand operated dead man's release for optimum safety whilst lowering

Inner frame width enables use with Euro pallets



* pos. 1	pos. 2	pos. 3	pos. 4	pos. 5	
WN11	1100	1000	900	800	700
WN15	1500	1400	1300	1200	1100
WN20	2000	1900	1800	1700	1600
WN25	2500	2300	2100	1900	1700



	WN11	WN15	WN20	WN25
Capacity	1,1 t	1,5 t	2,0 t	2,5 t
Lifting height	2260 - 2540 mm	2260 - 2540 mm	2340 - 2630 mm	2340 - 2630 mm
Jib arm	1210 - 1630 mm	1210 - 1630 mm	1210 - 1630 mm	1210 - 1630 mm
Frame height	160 mm	160 mm	160 mm	160 mm
Frame length	1750 mm	1750 mm	1750 mm	1750 mm
Height	1690 mm	1690 mm	1850 mm	1850 mm
Inner width	820 mm	820 mm	840 mm	840 mm
Frame width	1000 mm	1000 mm	1020 mm	1020 mm
Weight	168 kg	175 kg	250 kg	255 kg

AC TRANSMISSION JACKS

VL3 / VL6 / VL10



Capacity: 0,3 / 0,6 / 1,0 t
Max. height: 1965 / 1965 / 2000 mm

Hydraulic transmission jack

Pedal operated pump leaving both hands free for working

Precise adjustment for positioning of transmission

Hand operated dead man's release for optimum safety whilst lowering

Galvanised support saddle and base frame

Built-in safety overload valve

Sturdy swivel castors for optimum stability and manoeuvrability

Hard chromium plated piston rod and pump piston for long life

Also suitable for many other lifting operations such as mounting of springs, fuel tanks, exhaust pipes etc.



VLT12



Capacity: 1,2 t
Max. height: 1920 mm

Hydraulic transmission jack with telescopic cylinder

Especially for lifting heavy truck transmissions

Ideal for workshop pits due to low minimum height and long stroke

Pedal operated pump with built-in quick lift leaving both hands free for working

Precise adjustment for positioning of transmission

Hand operated dead man's release for optimum safety whilst lowering

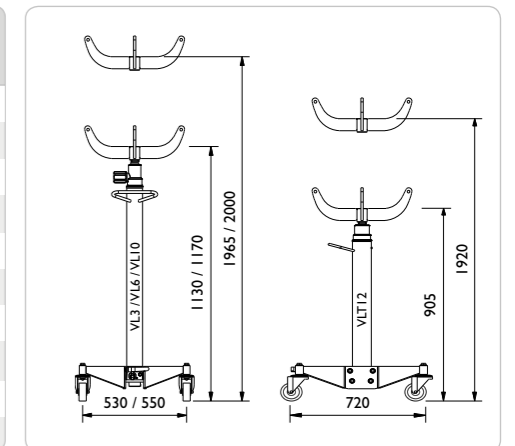
Galvanised support saddle and base frame

Built-in safety overload valve

Sturdy swivel castors (2 lockable) for optimum stability and manoeuvrability



	VL3	VL6	VL10	VLT12
Capacity	0,3 t	0,6 t	1,0 t	1,2 t
Min. height	1130 mm	1130 mm	1170 mm	905 mm
Max. height	1965 mm	1965 mm	2000 mm	1920 mm
Width	530 mm	530 mm	550 mm	720 mm
Weight	33 kg	33 kg	40 kg	65 kg
Wheel diameter	Ø 80 mm	Ø 80 mm	Ø 125 mm	Ø 125 mm



AC TRANSMISSION JACKS

VLT6



Capacity: 0,6 t
Max. height: 1915 mm

Transmission jack with pneumatically controlled high speed

The 3 stage telescopic cylinder ensures a very low minimum height

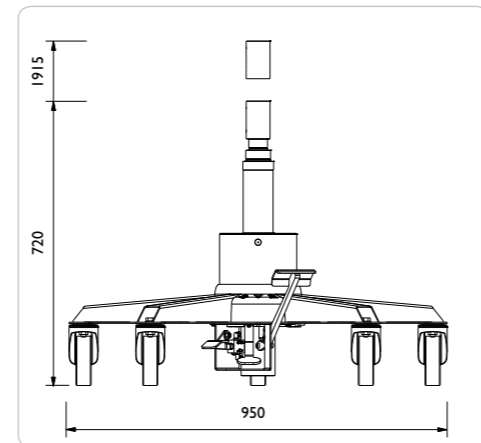
5 legs offers the best stability on the market

Simple operation by use of 3 pedals leaving both hands free for working

Pneumatically controlled high speed guarantees quick and efficient lifting

Large and robust swiveling wheels (2 with locks) offer optimum manoeuvrability

Built-in safety overload valve



VLT6	
Capacity	0,6 t
Stroke	1195 mm
Min. height	720 mm
Max. height	1915 mm
Height step 1/2/3	1120 mm / 1520 mm / 1915 mm
Air capacity step 1/2/3 (10 bar)	255 kg / 140 kg / 60 kg
Width	950 mm
Wheel size	Ø 125
Air supply	8-10 bar
Weight	53 kg

AC OPTION - TRANSMISSION JACKS

ASI



Capacity: 0,5 t
Dimension: 352x307x118 mm

Gearbox saddle for passenger vehicles

10° tilt in all directions for precise dismounting and re-mounting of gearboxes

Fitted with 2 straps and 2 rubber cushions with magnets

Weight: 18 kg

Fits:
All models



AS3



Capacity: 1,0 t
Dimension: 542x385x110 mm

Commercial heavy duty gearbox saddle for passenger vehicles and trucks

10° tilt in all directions for accurate dismounting and re-mounting of gearboxes

Low minimum height for wide range of applications

Fitted with 2 straps and 4 rubber cushions with magnets

Weight: 24 kg

Fits:
VL10 / VLT6 / VLT12



UB15



Kapacitet: 15 l

Universal bracket for liquid tub incl. tub

Can be mounted on all Ø25-60 mm pistons

Allocated space for tools, screws and small parts

Special design allows oil filters to drain hands free

Hinged tilt function for easy emptying

Resistant to oil, acid and cooling liquid



S / GSI



Saddle

Suitable for mounting springs, fuel tanks, exhaust pipes etc.

Fits:
VL3 / VL6 / VL10 / VLT12

Rubber cushion

To be used with the S-saddle for protection of car body

Fits:
S



AC WHEEL TROLLEYS

WTA500



Capacity: 0,5 t

Hydraulic wheel trolley for vans, trucks and buses

Flexible and ergonomic wheel trolley for the easy removal of wheels and brake drums

Adjustable lifting arms for wheel sizes \varnothing 270 – 1300 mm

Lifting arms with roller bearings for easy rotation of the wheel into correct position

Pedal operated pump leaving both hands free for working

Bracket for easy securing of the wheel whilst transporting

Hand operated dead man's release for optimum safety whilst lowering
Ideal for lifting brake drums, fuel tanks, tool boxes etc.

4 pcs of nylon castor wheels for optimum maneuverability



WTK



Capacity: 250 - 100 kg

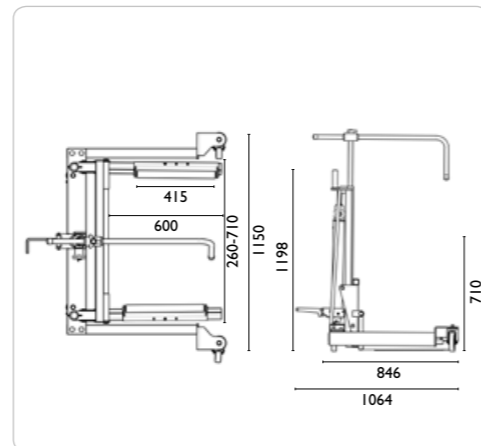
Crane arm for disc brakes, callipers, etc. (Option)

Mounted with the telescopic crane arm the wheel trolley is a universal lifting tool

The crane arm offers efficiency and good ergonomics when lifting disc brakes, brake drums, callipers, etc.

The crane arm easily swivels to one side to allow wheel removal operations to be carried out

Fitted with 360° pivoting hook



WTA500

Capacity	0,5 t
Height	1198 mm
Length	846 mm
Width	1150 mm
Roller-/fork length	415 / 600 mm
Roller distance	260 - 710 mm
Min. height	164 mm
Lifting height	710 mm
Wheel sizes	\varnothing 270 - 1300 mm
Weight	100 kg

AC WHEEL TROLLEYS

WT1500N



Capacity: 1,5 t

Hydraulic wheel trolley for agricultural and construction machinery

Easy handling of the largest wheels in the world

Two robust handles makes it easy to manoeuvre in the workshop

A simple switch makes expansion or retraction of the jaws very easy

The wheel can be secured with a ratchet strap for maximum safety

Wheel sizes: min. \varnothing 1000 mm - max \varnothing 2400 mm

Wheel width: max 1200 mm

Optimized packaging for ease of delivery and reduction of freight cost



WT1500NT



Capacity: 1,5 t

Hydraulic wheel trolley for agricultural and construction machinery

Easy handling of the largest wheels in the world

Two robust handles makes it easy to manoeuvre in the workshop

A simple switch makes expansion or retraction of the jaws very easy

A handle facilitates easy turning of the wheel on the trolley

The wheel can be secured with a ratchet strap for maximum safety

Wheel sizes: min. \varnothing 1000 mm - max \varnothing 2400 mm

Wheel width: max 1200 mm

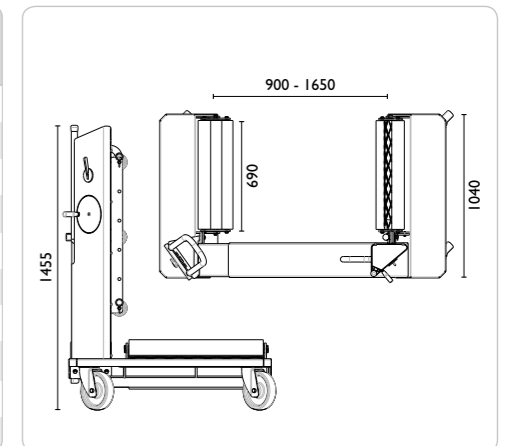
Optimized packaging for ease of delivery and reduction of freight cost



WT1500N

WT1500NT

Capacity	1,5 t	1,5 t
Height	1455 mm	1455 mm
Length	1040 mm	1040 mm
Width	1625 - 2375 mm	1625 - 2375 mm
Roller length	690 mm	690 mm
Roller distance	900 - 1650 mm	900 - 1650 mm
Castor wheel	\varnothing 200 mm	\varnothing 200 mm
Wheel sizes	\varnothing 1000 - 2400 mm	\varnothing 1000 - 2400 mm
Weight	300 kg	300 kg
Handle for wheel rotation	No	Yes



PJ16H / PJ20H



Capacity: 16 / 20 t
Stroke: 150 mm

Hand hydraulic junior presses for passenger car workshops and light industry

Foot-operated pneumatically controlled high speed and precise ram approach to work piece
Traversing ram
Built-in pressure gauge at convenient eye level
Built-in safety overload valve
Welded frame and press table made from high strength steel for long life
Removable ram end cap for mounting of various piston heads
Supplied with 2 vee blocks



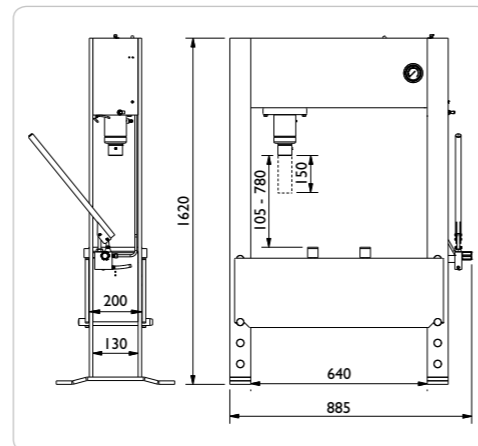
PJ25H



Capacity: 25 t
Stroke: 150 mm

Hand hydraulic junior press for passenger car workshops and light industry

Foot-operated pneumatically controlled high speed and precise ram approach to work piece
Traversing ram
Built-in pressure gauge at convenient eye level
Built-in safety overload valve
Welded frame and press table made from high strength steel for long life
Removable ram end cap for mounting of various piston heads
Supplied with 2 vee blocks



	PJ16H	PJ20H	PJ25H
Capacity	16 t	20 t	25 t
Stroke	150 mm	150 mm	150 mm
Height	1620 mm	1620 mm	1620 mm
Width	885 mm	885 mm	885 mm
Width between legs	640 mm	640 mm	640 mm
Depth between legs	130 mm	130 mm	130 mm
Clearance	105 - 780 mm	105 - 780 mm	105 - 780 mm
Weight	130 kg	130 kg	135 kg

P40H



Capacity: 40 t
Stroke: 300 mm

Hand hydraulic press for truck workshops and industry

Foot-operated double-acting pneumatically controlled high speed leaving both hands free for quick and precise positioning of item
Traversing ram
With 300 mm stroke for dealing with demanding jobs
Built-in pressure gauge at convenient eye level
Wide, welded frame and press table ensuring high flexibility
Winch operated press table
Built-in safety overload valve
Removable ram end cap for mounting of various piston heads
Supplied with 2 vee blocks



P40EHI



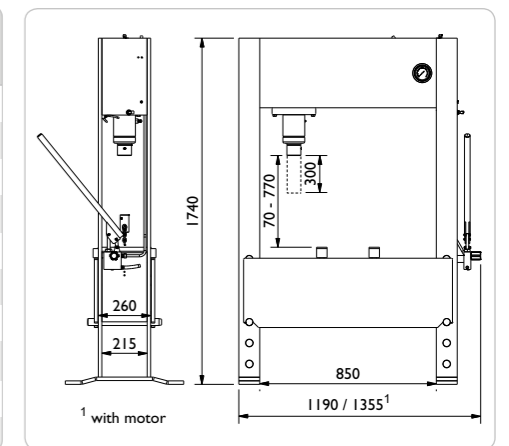
Capacity: 40 t
Stroke: 300 mm

Electro-hydraulic press for truck workshops and industry

Electro-hydraulic single stage pump (Press speed: 6,1 mm/sec)
The pressure can be set to any required tonnage up to 40 t
Traversing double-acting ram
Long stroke of 300 mm
Built-in pressure gauge at convenient eye level
Wide, welded frame and press table
Winch operated press table
Built-in safety overload valve
Removable ram end cap for mounting of various piston heads
The motor is 3x400V and 50/60 Hz (can be switched for 3x230V)
Supplied with 2 vee blocks



	P40H	P40EHI
Capacity	40 t	40 t
Stroke	300 mm	300 mm
Height	1740 mm	1740 mm
Width	1190 mm	1355 mm ¹
Width between legs	850 mm	850 mm
Depth between legs	215 mm	215 mm
Clearance	70 - 770 mm	70 - 770 mm
Press speed		6,1 mm/s
Return speed		7,9 mm/s
Weight	425 kg	445 kg



P60H



Capacity: 60 t
Stroke: 300 mm

Hand hydraulic press for truck workshops and heavy industry

Foot-operated double-acting pneumatically controlled high speed leaving both hands free for quick and precise positioning of item
Traversing ram
With 300 mm stroke for dealing with demanding jobs
Built-in pressure gauge at convenient eye level
Wide, welded frame and press table ensuring high flexibility
Winch operated press table
Built-in safety overload valve
Removable ram end cap for mounting of various piston heads
Supplied with 2 vee blocks



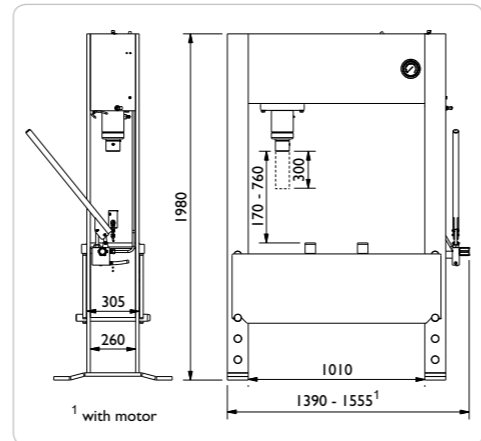
P60EH1 / P60EH2



Capacity: 60 t
Stroke: 300 mm

Electro-hydraulic press for truck workshops and heavy industry

P60EH1: Single stage pump
Press speed: 4,2 mm/sec
P60EH2: 2-stage pump
Press speed: 10,0 mm/sec
The pressure can be set to any required tonnage up to 60 t
Traversing double-acting ram with long stroke of 300 mm
Built-in pressure gauge at convenient eye level
Winch operated press table
Removable ram end cap for mounting of various piston heads
The motor is 3x400V and 50/60 Hz (can be switched for 3x230V)
Supplied with 2 vee blocks



	P60H	P60EH1	P60EH2
Capacity	60 t	60 t	60 t
Stroke	300 mm	300 mm	300 mm
Height	1980 mm	1980 mm	1980 mm
Width	1390 mm	1555 mm ¹	1555 mm ¹
Width between legs	1010 mm	1010 mm	1010 mm
Depth between legs	260 mm	260 mm	260 mm
Clearance	170 - 760 mm	170 - 760 mm	170 - 760 mm
Press speed		4,2 mm/s	10,0 mm/s
Return speed		5,9 mm/s	14,5 mm/s
Weight	625 kg	630 kg	635 kg

P100H



Capacity: 100 t
Stroke: 300 mm

Hand hydraulic press for truck workshops and heavy industry

Foot-operated double-acting pneumatically controlled high speed leaving both hands free for quick and precise positioning of item
Traversing ram
With 300 mm stroke for dealing with demanding jobs
Built-in pressure gauge at convenient eye level
Wide, welded frame and press table ensuring high flexibility
Winch operated press table
Built-in safety overload valve
Removable ram end cap for mounting of various piston heads
Supplied with 2 vee blocks



P100EH2



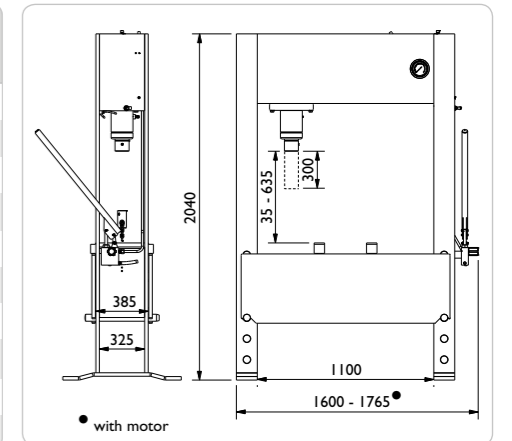
Capacity: 100 t
Stroke: 300 mm

Electro-hydraulic press for truck workshops and heavy industry

Electro-hydraulic 2-stage pump (Press speed: 6,2 mm/sec)
Traversing double-acting ram with long stroke of 300 mm
The pressure can be set to any required tonnage up to 100 t
Built-in pressure gauge at convenient eye level
Wide, welded frame and press table ensuring high flexibility
Winch operated press table
Removable ram end cap for mounting of various piston heads
The motor is 3x400V and 50/60 Hz (can be switched for 3x230V)
Supplied with 2 vee blocks



	P100H	P100EH2
Capacity	100 t	100 t
Stroke	300 mm	300 mm
Height	2040 mm	2040 mm
Width	1600 mm	1765 mm*
Width between legs	1100 mm	1100 mm
Depth between legs	325 mm	325 mm
Clearance	35 - 635 mm	35 - 635 mm
Press speed		6,2 mm/sec
Return speed		8,3 mm/sec
Weight	1200 kg	1215 kg



AC OPTION – PRESSES

PJW



Winch
Efficient and easy adjustment of press table

Fits:
PJ16H
PJ20H
PJ25H



PJS



Set of press tools
Press plate with 3 piston heads (Ø 12, 20, 30 mm and adaptor)

Fits:
PJ16H
PJ20H
PJ25H



PS



Set of press tools
Press plate with set of piston heads (Ø 10, 12, 15, 17, 20, 22, 25, 30 mm, adaptor and rack)

Fits:
P40H / P40EH1
P60H / P60EH1 / P60EH2
P100H / P100EH2



PS25 / PS40 / PS60 / PS100



Protection screen
Maximum operator safety

Steel mesh with shatterproof plexiglass

Protection screen with extreme high breakage point

Model Fits:
PS25 PJ16H, PJ20H, PJ25H
PS40 P40H, P40EH1
PS60 P60H, P60EH1, P60EH2
PS100 P100H, P100EH2



AC AIRCRAFT WHEEL TROLLEY

WTA500AP



Capacity: 0,5 t

Hydraulic wheel trolley for removal of wheels and brake drums on aircrafts

Flexible and ergonomic wheel trolley for the easy removal of wheels and brake drums

High lifting height (710 mm) makes it ideal for lifting e.g. wheels and brake drums off a transport wagon

Adjustable lifting arms for wheel sizes Ø 270 – 1300 mm

Lifting arms with roller bearings for easy rotation of the wheel into correct position

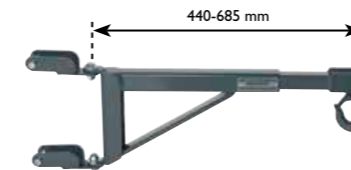
Pedal operated pump leaving both hands free for working

Hand operated dead man's release for optimum safety whilst lowering

4 pcs of polyurethane castor wheels for optimum maneuverability



WTK



Capacity: 250 - 100 kg

Crane arm for disc brakes, callipers, etc. (Option)

Mounted with the telescopic crane arm the wheel trolley is a universal lifting tool

The crane arm offers efficiency and good ergonomics when lifting disc brakes, brake drums, callipers, etc.

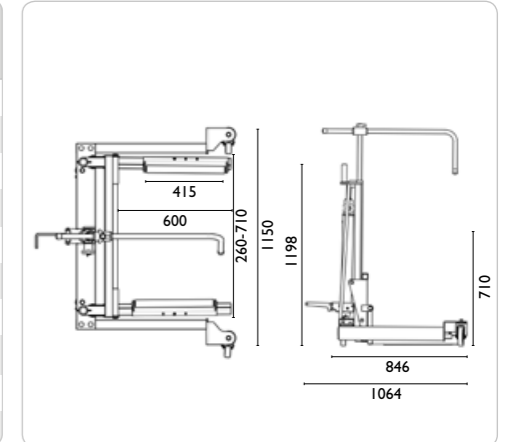
The crane arm easily swivels to one side to allow wheel removal operations to be carried out

Fitted with 360° pivoting hook



WTA500AP

Capacity	0,5 t
Height	1198 mm
Length	846 mm
Width	1150 mm
Roller-/fork length	415 / 600 mm
Roller distance	260 - 710 mm
Min. height	164 mm
Lifting height	710 mm
Wheel sizes	Ø 270 - 1300 mm
Weight	100 kg



AC AIRCRAFT JACKS

25-2AP



Capacity: 25 / 10 t
Max. height: 260 / 364 mm

Air hydraulic aircraft jack

Compact and slim design for easy operation and manoeuvrability

Ergonomic handle with push buttons

The jack can be operated by either compressed-air, nitrogen from the aircraft wheels or a mobile nitrogen service cart

Rapid ram retraction without load

Safety features include manual lowering valve, safety overload valve and dead mans release

Designed and manufactured according to the aircraft standards: EN 1915-1, EN 1915-2 and EN 12312-19.



MLG - Main Landing Gear

Bombardier
CRJ900

Embraer
EMB170-195

NLG - Nose Landing Gear

Airbus
A320

Boeing
B737-100 / -200 / -300 / -400 / -500
B737-600 thru -900

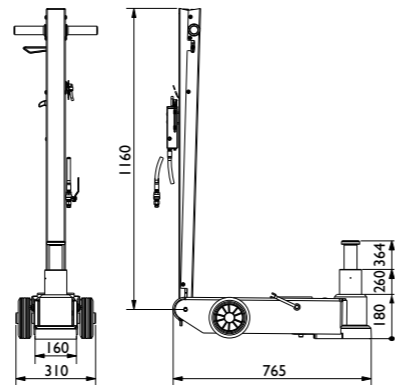
Bombardier
CRJ900

Embraer
EMB170-195



25-2AP

Capacity	25 / 10 t
Min. height	180 mm
Max. height	260 / 365 mm
Frame length	765 mm
Handle length	1160 mm
Width	160 mm
Width (with wheels)	310 mm
Air supply	9 - 12 bar
Air consumption	350 l/min
Weight	56 kg



AC AIRCRAFT JACKS

65-1AP



Capacity: 65 t
Max. height: 430 mm

Air hydraulic aircraft jack

Compact and slim design for easy operation and manoeuvrability

Ergonomic handle with push buttons

The jack can be operated by either compressed-air, nitrogen from the aircraft wheels or a mobile nitrogen service cart

Fitted with extension screw (80 mm) for optimum use of the stroke

Rapid ram retraction without load

Safety features include manual lowering valve, safety overload valve and dead mans release

Designed and manufactured according to the aircraft standards: EN 1915-1, EN 1915-2 and EN 12312-19.



MLG - Main Landing Gear

Airbus
A300 / A310

Boeing
B707 / 720
B717
B737-100 / -200 / -300 / -400 / -500
B737-600 thru -900
B757 / -200 / -300
B767-200 / 300
B787

McDonnell Douglas
DC8
DC9

NLG - Nose Landing Gear

Airbus
A300/A310
A330-300
A340-200 / -300 / -500 / -600

Boeing
B707 / 720
B727
B767-200 / -300 / -400ER
B777-200 / -300 / -300ER
B787

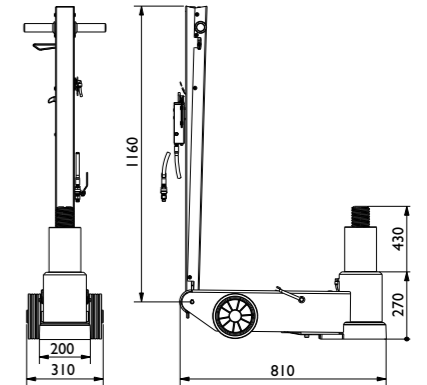
McDonnell Douglas
MD11
DC10

Lockheed
L1011



65-1AP

Capacity	65 t
Min. height	270 mm
Max. height	430 mm
Frame length	810 mm
Handle length	1160 mm
Width	200 mm
Width (with wheels)	310 mm
Air supply	9 - 12 bar
Air consumption	350 l/min
Weight	85 kg



AC AIRCRAFT JACKS

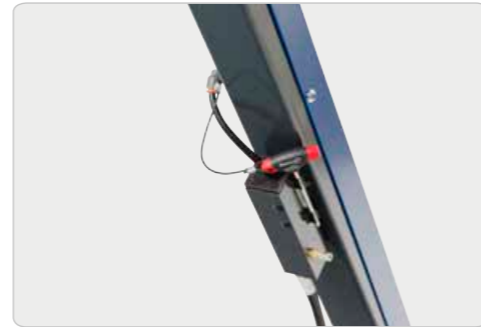
65-IAPH



Capacity: 65 t
Max. height: 520 mm

Air hydraulic aircraft jack with extra long stroke

Compact and slim design for easy operation and manoeuvrability
Ergonomic handle with push buttons
The jack can be operated by either compressed-air, nitrogen from the aircraft wheels or a mobile nitrogen service cart
Fitted with extension screw (80 mm) for optimum use of the stroke
Rapid ram retraction without load
Safety features include manual lowering valve, safety overload valve and dead mans release
Designed and manufactured according to the aircraft standards: EN 1915-1, EN 1915-2 and EN 12312-19.

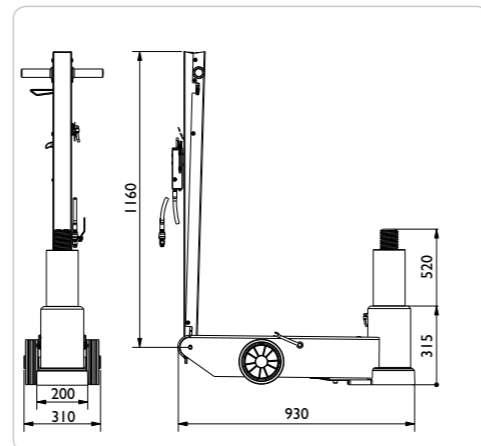


MLG - Main Landing Gear

Airbus
A300 / A310
A319 / A320 / A321 (MLG-single only)
A330-300
A340-200 / -300
Boeing
B717
B727
B737-100 / -200 / -300 / -400 / -500
B737-600 thru -900
B767-400ER
McDonnell Douglas
MD11
DC8
DC9
DC10
Lockheed
L1011

NLG - Nose Landing Gear

Airbus
A340 / -500 / -600
Boeing
B727
B767-200 / -300 / -400ER
B777-200 / -300 / -300ER
McDonnell Douglas
MD11



65-IAPH

Capacity	65 t
Min. height	315 mm
Max. height	520 mm
Frame length	930 mm
Handle length	1160 mm
Width	200 mm
Width (with wheels)	310 mm
Air supply	9 - 12 bar
Air consumption	350 l/min
Weight	94 kg

AC AXLE STANDS

AB1,5 / AB3

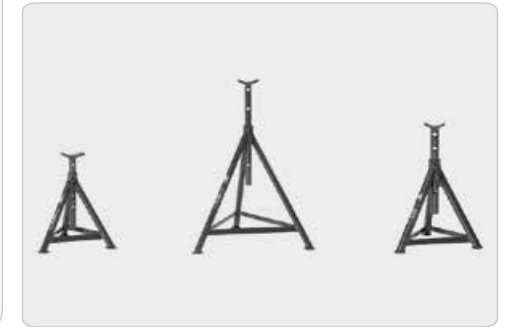


Capacity: 1,5 - 3,0 t

Standard axle stands

Suitable for more or less all types of vehicles i.e. passenger cars, trucks, buses, agricultural and contractors' machinery
Adjustable in several heights (5-6 positions)
Robust construction ensures maximum stability and long life

WARNING :
Always use axle stands to support the vehicle before working under it
No person shall remain in, on or under a load that is being jacked or is supported only by a jack



AB5 / AB8

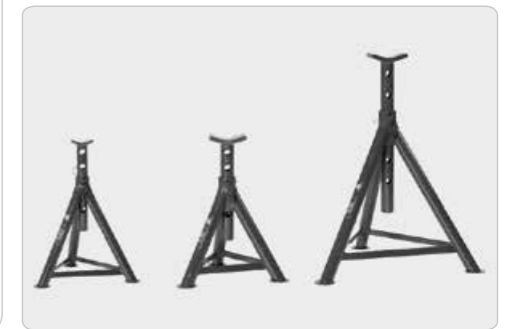


Capacity: 5,0 - 8,0 t

Standard axle stands

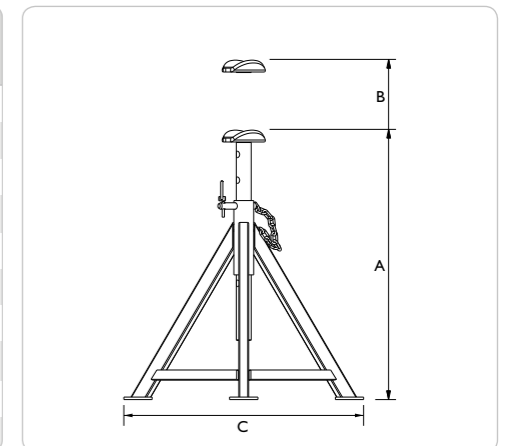
Suitable for more or less all types of vehicles i.e. passenger cars, trucks, buses, agricultural and contractors' machinery
Adjustable in several heights (5-6 positions)
Robust construction ensures maximum stability and long life

WARNING :
Always use axle stands to support the vehicle before working under it
No person shall remain in, on or under a load that is being jacked or is supported only by a jack



	AB 1,5-260	AB 1,5-420	AB 3-320	AB 5-365	AB 8-310	AB 8-360	AB 8-580
Capacity	1,5 t	1,5 t	3,0 t	5,0 t	8,0 t	8,0 t	8,0 t
Min. height (A)	260 mm	420 mm	320 mm	365 mm	310 mm	360 mm	580 mm
Max. height (B)	450 mm	750 mm	430 mm	590 mm	480 mm	590 mm	950 mm
Width (C)	270 mm	430 mm	310 mm	370 mm	300 mm	400 mm	600 mm
Positions	5	5	5	5	4	5	6
Net weight	2,2 kg	4,8 kg	3,1 kg	4,8 kg	6,5 kg	8,1 kg	11,4 kg

All dimensions are to the upper saddle edge



AC AXLE STANDS

ABS5 / ABS12



Capacity: 5,0 / 12,0 t

Axle stands with spindle extension

User friendly axle stand – the spindle extension offers a quick and precise adjustment of the height
Suitable for more or less all types of vehicles

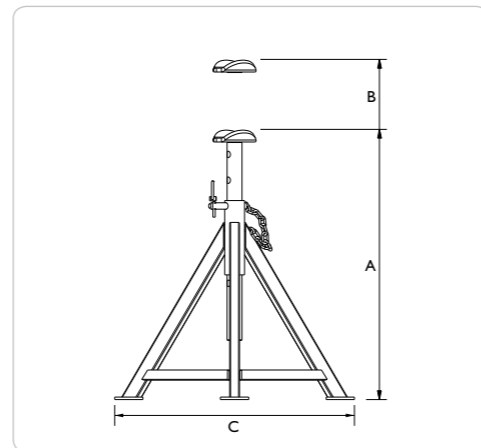
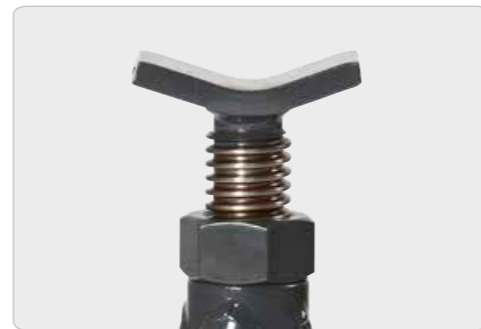
Model ABS5-230 is especially suitable for vehicles with low clearance e.g. buses, fork lift trucks and flat trailers

Robust construction ensures maximum stability and long life

WARNING :

Always use axle stands to support the vehicle before working under it

No person shall remain in, on or under a load that is being jacked or is supported only by a jack



	ABS 5-230	ABS 12-320	ABS 12-450
Capacity	5,0 t	12,0 t	12,0 t
Min. height (A)	230 mm	320 mm	450 mm
Max. height (B)	320 mm	485 mm	725 mm
Width (C)	250 mm	300 mm	420 mm
Positions	spindle	spindle	spindle
Net weight	3,9 kg	10,8 kg	15,2 kg

All dimensions are to the upper saddle edge

AC AXLE STANDS

AB16



Capacity: 16,0 t

Axle stands for the heavy lifting jobs

Suitable for exceptionally heavy vehicles, e.g. large trucks, contractor's machinery, military vehicles etc.

Adjustable in several heights (3-6 positions)

Robust construction ensures maximum stability and long life

WARNING :

Always use axle stands to support the vehicle before working under it

No person shall remain in, on or under a load that is being jacked or is supported only by a jack



ABS8



Capacity: 8,0 t

Extra high axle stands

Especially for supporting vehicles lifted by mobile columns or in-ground lifts

The spindle extension offer a quick and precise adjustment of the height

Strong transport wheels for easy and precise manoeuvring

Robust construction ensures maximum stability and long life

WARNING :

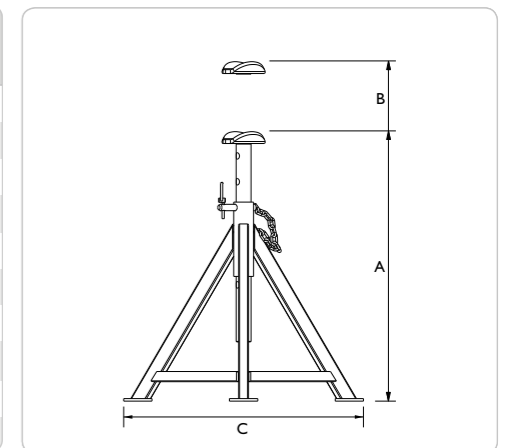
Always use axle stands to support the vehicle before working under it

No person shall remain in, on or under a load that is being jacked or is supported only by a jack



	AB 16-290	AB 16-440	AB 16-675	ABS 8-950	ABS 8-1400
Capacity	16,0 t	16,0 t	16,0 t	8,0 t	8,0 t
Min. height (A)	290 mm	440 mm	675 mm	950 mm	1400 mm
Max. height (B)	455 mm	725 mm	1125 mm	1550 mm	2000 mm
Width (C)	310 mm	460 mm	550 mm	650 mm	880 mm
Positions	3	5	7	spindle	spindle
Net weight	13,0 kg	20,0 kg	31,0 kg	52,4 kg	68,0 kg

All dimensions are to the upper saddle edge



AC BOTTLE JACKS

TYPE 1



Capacity: 2 - 10 t

Hydraulic bottle jack with single lift and extension screw

5 models with lifting capacities from 2-10 tonnes

With extension screw for optimum use of the stroke

Models with bevelled base (see table) offer increased stability and safety as the jack follows the tilt of the vehicle when lifting

3 part galvanised pump handle for easy storage

Jack can be used in horizontal position, as long as the pump piston is placed under the jack

Built-in safety overload valve



TYPE 2



Capacity: 12 - 30 t

Hydraulic bottle jack with single lift and extension screw for heavy duty lifting

5 models with lifting capacities from 12-30 tonnes

With extension screw for optimum use of the stroke

Models with bevelled base (see table) offer increased stability and safety as the jack follows the tilt of the vehicle when lifting

3 part galvanised pump handle for easy storage

Jack can be used in horizontal position, as long as the pump piston is placed under the jack

Fitted with practical carrying handle for easy transport

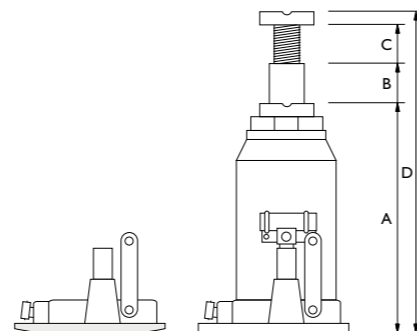
Built-in safety overload valve



Model	Cap.	Min. height (A)	Hydr. lift (B)	Ext. Screw (C)	Max. height (D)	Weight
A2-170	2,0 t	170 mm	115 mm	90 mm	380 mm	3,5 kg
A3,5-170	3,5 t	170 mm	115 mm	90 mm	380 mm	3,8 kg
A5-212	5,0 t	210 mm	150 mm	100 mm	460 mm	4,7 kg
AX8-220	8,0 t	220 mm	150 mm	110 mm	480 mm	7,0 kg •
A10-220	10,0 t	220 mm	150 mm	110 mm	480 mm	7,0 kg •
A12-230	12,0 t	230 mm	160 mm	110 mm	500 mm	8,1 kg •
AX15-230	15,0 t	230 mm	155 mm	110 mm	495 mm	9,2 kg •
AX20-240	20,0 t	240 mm	155 mm	110 mm	505 mm	11,8 kg •
AH25-240	25,0 t	240 mm	160 mm	120 mm	515 mm	14,3 kg •
A30-240	30,0 t	240 mm	140 mm	100 mm	480 mm	15,3 kg •

• Bevelled base

All models can be used in temperatures ranging from -20° to 70° C



• Bevelled base

AC BOTTLE JACKS

TYPE 3



Capacity: 3 - 12 t

Hydraulic bottle jack with double lift telescopic rams for extra long stroke

5 models with lifting capacities from 3-12 tonnes

Models with spindle extension offer optimum use of the stroke

ATN10-175 has horizontal pumping action and is therefore ideal for vehicles with low clearance

Models with bevelled base (see table) offer increased stability and safety as the jack follows the tilt of the vehicle when lifting

3 part galvanised pump handle for easy storage

Built-in safety overload valve



TYPE 4



Capacity: 4 t & 10 t

Hydraulic bottle jack with single lift ram for vehicles with high clearance

2 special models with lifting capacities of 4 or 10 tonnes

Large stroke makes them ideal for lifting e.g. agricultural machines

3 part galvanised pump handle for easy storage

ADX 10-370 with bevelled base offer increased stability and safety as the jack follows the tilt of the vehicle when lifting

Jack can be used in horizontal position, as long as the pump piston is placed under the jack

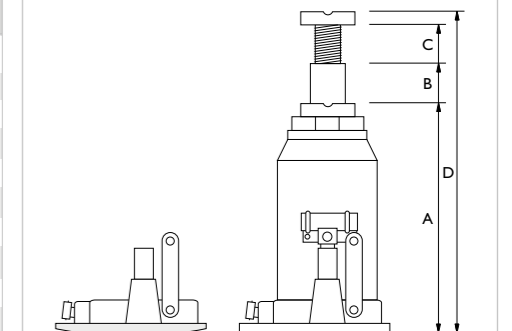
Built-in safety overload valve



Model	Cap.	Min. height (A)	Hydr. lift (B)	Ext. Screw (C)	Max. height (D)	Weight
ATDX 3-185	3,0 t	185 mm	215 mm	-	400 mm	5,0 kg •
AT 5-215	5,0 t	215 mm	305 mm	-	520 mm	7,2 kg •
ATG 10-200	10,0 t	200 mm	260 mm	70 mm	530 mm	10,2 kg •
ATPX 12-230	12,0 t	230 mm	255 mm	85 mm	570 mm	13,4 kg •
ATN 10-175	10,0 t	175 mm	210 mm	-	385 mm	8,7 kg
ADX 4-370	4,0 t	370 mm	260 mm	-	630 mm	7,3 kg
ADX 10-370	10,0 t	370 mm	260 mm	-	630 mm	10,5 kg •

• Bevelled base

All models can be used in temperatures ranging from -20° to 70° C



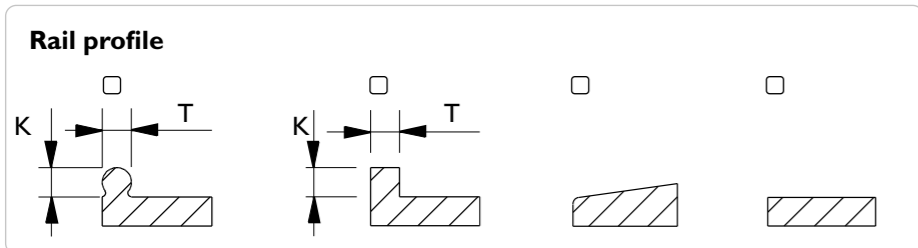
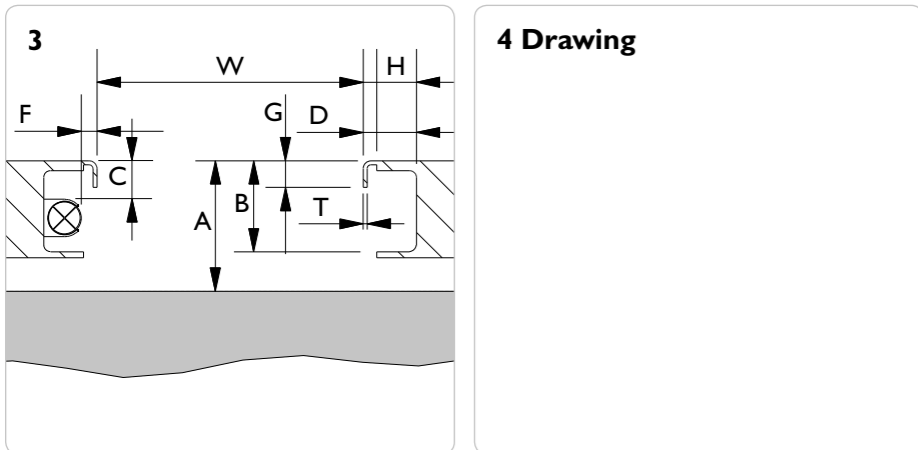
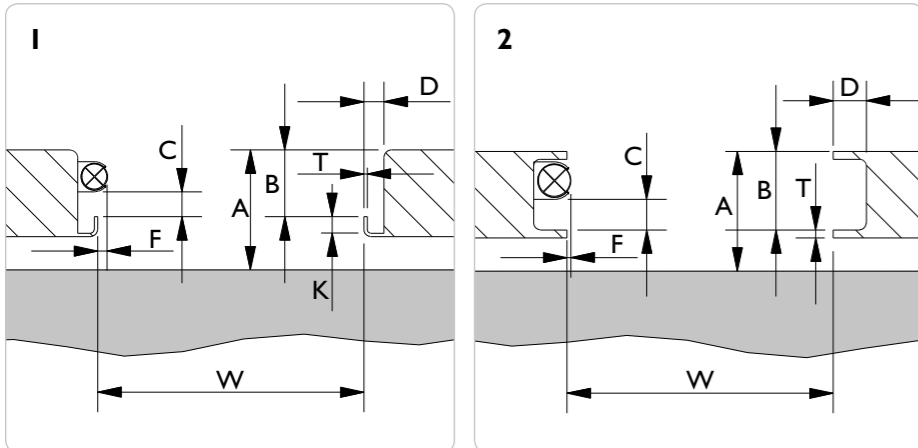
• Bevelled base



LIFT SPECIFICATION FORM

FL - Heavy duty jacking beam 6 t 12 t 16 t 20 t SD - Jacking beam 2 t 2,6 t 3,2 t 4 t

Lift: _____ Model: _____ Capacity: _____ Year: _____



Drawing no.: _____

W = _____ mm
 A = _____ mm
 B = _____ mm
 D = _____ mm
 G = _____ mm
 H = _____ mm
 K = _____ mm
 T = _____ mm

If the lift is mounted with light or other obstructing parts, please fill out C and F:

C min. = _____ mm
 F max. = _____ mm

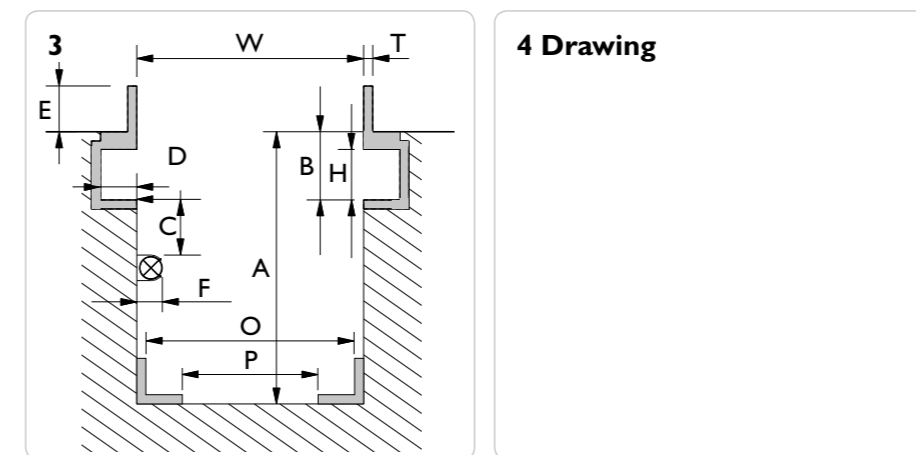
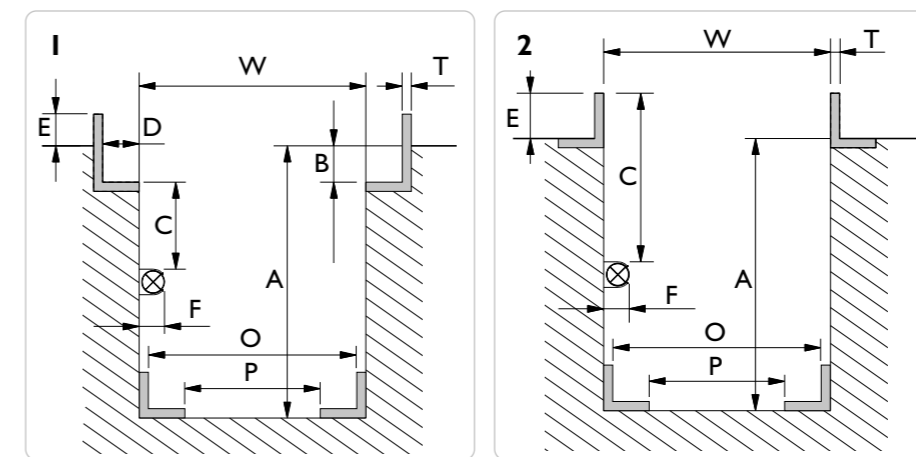
PLEASE NOTE: It is the customer's responsibility that the given measures are correct and sufficient. The lift shall always be approved by the lift manufacturer for mounting of jacking beams. **N.b. EN1493:1998 the capacity of the jacking beam cannot exceed 0,66 x the capacity of the lift.** (A 2 t jacking beam on a 3 t lift is okay - but not a 2,6 t).

Date: _____ Measured by: _____ Dealer: _____ Signature: _____



PIT SPECIFICATION FORM

GD - Pit jack single ram 10 t 15 t 20 t FL - Heavy duty jacking beam 6 t 12 t 16 t 20 t
 GD - Pit jack twin ram 10 t 15 t 20 t SD - Jacking beam 2 t 2,6 t 3,2 t 4 t
 GDT - Telescopic pit jack 15 t ABT - Support bridge 15 t
 GGD - Floor pit jack 15 t AB - Support bridge 20 t



Placing of saddle

The placing of top saddle **excluding** cross beam adaptor, safety stand and extensions is required:

- above workshop floor _____ mm
- levelling with workshop floor
- below workshop floor _____ mm

The top of the cylinder will be positioned +/- 50 mm according to requested level

Option

Please note, mounting of different options will increase the min. height:

- Cross beam T4-1 = + 100 mm
- Cross beam T5-1 = + 95 mm
- Cross beam T6-1 = + 55 mm
- Cross beam T4-2 = + 145 mm
- Cross beam T5-2 = + 140 mm
- Cross beam T6-2 = + 90 mm
- Safety stand S200 = + 65 mm
- AS3 = + 100 mm

Drawing no.: _____

Please measure various places along the length of the pit. **Max 12 mm variation between W min og W max. throughout the pit length**

W min. = _____ mm
 W max. = _____ mm
 A min. = _____ mm
 B = _____ mm
 D = _____ mm
 E = _____ mm
 H = _____ mm
 T = _____ mm

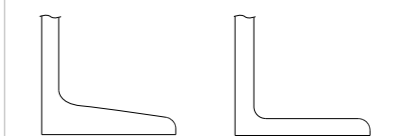
If the pit is mounted with light or other obstructing parts, please fill out C and F:

C min. = _____ mm
 F max. = _____ mm

GGDI50S - Floor pit jack

O min. = _____ mm
 O max. = _____ mm
 P min. = _____ mm
 P max. = _____ mm

Rolltype / Rail profile



Conical/tilted Cylindrical/straight

PLEASE NOTE: It is the customer's responsibility that the given measures are correct and sufficient and that the pit is built and anchored to withstand the designated loading.

Date: _____ Measured by: _____ Dealer: _____ Signature: _____

PROLONGED WARRANTY

All products produced after January 1st 2017 are covered by a 10 year warranty on frame, chassis, and steel structures as well as a 3 year warranty on the hydraulic system (pump and cylinder)

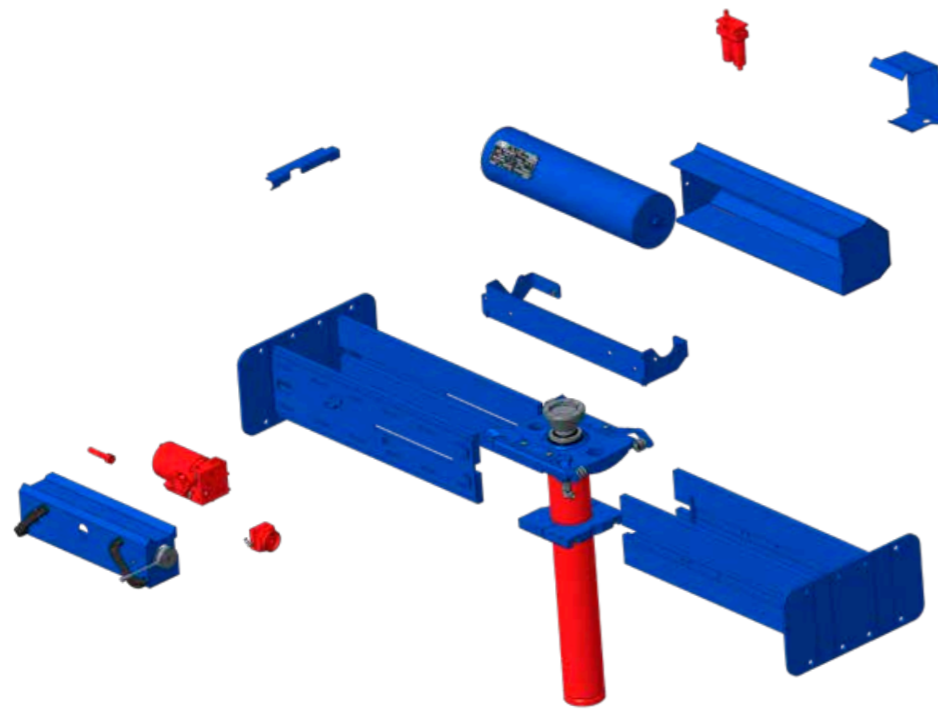
BUSINESS AS USUAL

The warranty covers the replacement of parts due to defects in material or workmanship. Steel constructions are covered for 10 years - hydraulic systems for 3 years (pump and cylinder)

The warranty does not cover damage caused by accident, misuse, neglect, improper maintenance or normal wear and tear

WE TRUST OUR QUALITY

We have made no changes in terms or claim handling. We simply trust our quality enough to extend the warranty to 10 year / 3 year


PRODUCT EXAMPLE

The blue parts are covered by a 10 year prolonged warranty, red parts are covered by a 3 year prolonged warranty

GENERAL TERMS OF SALE AND DELIVERY FOR DELIVERIES MADE BY AC HYDRAULIC A/S
1 SCOPE

- 1.1 The present Terms of sale and delivery shall apply to the extent that they have not been deviated from through written agreement. The buyer's purchasing terms shall not apply unless accepted in writing by AC Hydraulic A/S (hereinafter referred to as AC).
- 1.2 The terms of sale and delivery shall be forwarded to the buyer and shall apply to all orders effected after the date of forwarding.
- 1.3 AC shall be entitled to change the terms of sale and delivery with immediate effect.
- 1.4 AC's products are only designed and made for commercial use and must not without AC's written consent be used in or integrated into objects which are not used commercially.
- 1.5 All intellectual property rights, drawings, sketches, technical specifications, etc., shall belong to AC and must not be copied or handed over to any third party without prior acceptance from AC. Nor must the products delivered be made, copied or handed over to a third party with a view to this. Unless otherwise expressly agreed the parties' agreement does not involve any transfer of intellectual property rights.

2 OFFER AND ACCEPTANCE

- 2.1 AC's offers shall apply for 30 days from the date of the offer unless otherwise stated. The buyer's orders and requests shall not be binding for AC until the buyer has received written order confirmation.

3 PRICE

- 3.1 Unless otherwise agreed, the price shall be stated exclusive of VAT and duties and in Danish currency.
- 3.2 All prices shall be inclusive of packing, but exclusive of freight, VAT, customs duties, or other public duties.
- 3.3 The price is stated subject to changes considering documented changes to prices for materials, prices from sub-suppliers, changes to public duties, exchange rate changes, changes to wages and salaries, etc.
- 3.4 If such price changes occur, AC shall without undue delay inform the buyer accordingly. The buyer may within 7 days from receipt of that information on the price increase cancel the agreement without being considered in default. If the buyer does not cancel the agreement within the 7 day period, the price increase is to be considered as accepted by the buyer.
- 3.5 Notwithstanding paragraph 3.4 AC shall - after the buyer's accept - be entitled to regulate the price in case of documented changes to exchange rates, public duties, customs duties, etc., which lead to an increase in AC's costs without the buyer has the right to cancel the agreement.
- 3.6 If the delivery is changed, or if AC's costs are otherwise increased because of the buyer's circumstances, AC shall in the same manner be entitled to regulate the agreed price in the same extent.

4 DELIVERY

- 4.1 Delivery shall be ex works AC's place of business, cf. Incoterms 2010, unless otherwise expressly agreed.
- 4.2 The products bought shall be forwarded at the buyer's expense and risk.
- 4.3 Delivery up to 30 days after the date of delivery stated in the order confirmation shall be considered delivery on time.
- 4.4 If delivery is delayed for more than 30 days, the buyer shall be entitled to rescind the contract unless the products purchased have been reported ready for dispatch before AC has received written information about the buyer's intention to rescind. The buyer cannot raise any claim of any kind against AC in case of a delay.
- 4.5 The buyer shall not be entitled to reject part delivery.

5 BARRIERS TO DELIVERY

- 5.1 The following circumstances shall lead to exemption from liability, if they prevent the fulfilment of the agreement or make fulfilment unreasonably onerous: Labour market dispute and any other circumstance beyond the parties' control, such as fire, war, mobilisation or military drafting, application and seizure, currency restrictions, riot, unrest, lack of means of transport, general shortage of goods, restrictions on fuel, and defects in or delays of deliveries from sub-suppliers.
- 5.2 If delivery without defects or on time is prevented temporarily through one or more of the above circumstances, delivery shall be postponed for a period corresponding to the duration of the prevention plus a period which is reasonable according to the circumstances for normalising the conditions. Delivery on the thus postponed date shall in every respect be considered delivery on time. If the barrier to delivery can be expected to last for more than 12 weeks, both AC and the buyer shall be entitled to cancel the agreement without being considered in default.

6 PAYMENT/RESERVATION OF PROPERTY

- 6.1 The terms of payment shall be net cash, unless otherwise agreed.
- 6.2 In case of late payment, the purchase amount shall carry interest at 1.5% per month or fraction thereof.
- 6.3 The products delivered shall remain AC's property until payment of the full amount has been made, including interest and costs incurred.
- 6.4 Complaints regarding deliveries shall not entitle the buyer to withhold payment for deliveries already made, and consequently the buyer's withholding of amounts due shall be considered default.
- 6.5 Does the buyer have a claim which can be set off against the purchase price the buyer is only entitled to set off after AC's prior written consent.

7 LIABILITY FOR DEFECTS

- 7.1 The buyer shall check and examine the supply immediately on receipt. In case of defective delivery, AC shall be informed in writing immediately. The buyer shall not later be entitled to claim defects which were or ought to have been discovered through such examination. This shall also apply if the buyer does not immediately complain about hidden defects discovered at a later date.
- 7.2 AC has the right to remedy any defects which are due to defects in materials and/or the manufacturing by/of the delivered products. Remedying shall either be in the form of delivery of new products or, at AC's option, by repair.
- 7.3 If replacement or repair will lead to disproportionate costs, AC shall, however, be entitled instead to grant a proportional reduction in the purchase amount corresponding to the decrease in value of the delivered.
- 7.4 AC's liability for defects is always limited to either after AC's own choice to make replacement, repair or to grant the buyer a proportional reduction in the purchase amount. The buyer has no other remedies according to violation against AC.
- 7.5 In connection with repair and replacement, the buyer shall on their own account make sure that the defective product is made available to AC at AC's place of business. Returning of the defective product and forwarding of a new or repaired product to the buyer shall be made at the buyer's expense and risk. Furthermore, labour costs and other consequential costs are not included in AC's obligations towards the buyer.
- 7.6 Components replaced shall belong to AC.
- 7.7 AC's liability shall only cover defects discovered within 36 months from AC's delivery to buyer, unless AC regarding specific parts of the product in general has undertaken liability for a longer period of time. Such longer period can never exceed 120 months from AC's delivery to buyer. AC's obligations shall lapse if the buyer does not complain within 8 days from the date when the defect was or ought to have been discovered.
- 7.8 AC cannot in any case be ordered to cover consequential damage, liquidated damages, day fines, operating loss, time loss, loss of profits, or any other indirect loss, and AC shall not be liable for any consequential loss and costs of demounting and remounting the objects in which the product sold may have been integrated.
- 7.9 AC's liability shall in no case exceed an amount corresponding to the invoice value exclusive of VAT for the defective product.
- 7.10 The buyer shall not remove the enclosed manual from the product. The buyer shall in no circumstances change or remove labelling regarding capacity, warnings and serial number on the product.
- 7.11 Changes to or intervention in the product sold without AC's written consent shall release AC from any liability for the product.

8 PRODUCT LIABILITY

- 8.1 AC shall be liable for injury only to the extent which is a consequence of mandatory law.
- 8.2 AC shall not be liable for damage to real property and goods belonging to the buyer or a third party or damage which occur while the products delivered are in the buyer's possession.
- 8.3 AC shall not be liable for damage to products made by the buyer or products in which the buyer's products are included, or for damage to real property or goods caused by the buyer's products as a consequence of AC's supply.
- 8.4 AC shall in no case be liable for consequential damage, liquidated damages, day fines, operating loss, time loss, loss of profits, or any other indirect loss.
- 8.5 To the extent that product liability is imposed on AC towards a third party, the buyer shall be obliged to indemnify AC to the same extent as AC's liability is limited as mentioned above.
- 8.6 If a third party makes a claim for product damage, AC shall immediately be informed. The buyer shall be obliged to accept legal action against them at the court or arbitral tribunal dealing with claims for compensation put forward by a third party against AC because of damage or loss claimed to have been caused by the supply.

9 PARTIAL INVALIDITY

- 9.1 If one or more paragraphs of these terms of delivery is declared invalid, illegal or unenforceable none of the remaining paragraphs validity, legality or feasibility affected or impaired thereof.

10 GOVERNING LAW AND VENUE

- 10.1 Any dispute between the parties shall be settled according to Danish law, with the exception of Danish rule of private international law. Any dispute shall be settled at the Court in Viborg which is the only proper venue.



AC Hydraulic A/S

Fanøvej 6 • DK-8800 Viborg • Tel. +45 8662 2166 • Fax +45 8662 2988
E-mail: sales@ac-hydraulic.dk • www.ac-hydraulic.com