

Wide range of loadability:

suitable for every type of vehicle

Quick to use:

pad built into the arm that reduces the number of operations necessary for lifting the vehicle

Flexible installation:

simple and fast installation with minimum interventions, even when there are grids

Scissor lift ideal for installation in both paint booth grids and preparation areas, and flush-mounted for traditional floors.

Its **ergonomic design** allows you to easily reach the pick-up points of the vehicles, **eliminating all obstacles surrounding the vehicle**, in this way making every operation on the chassis easier.

Capacity up to

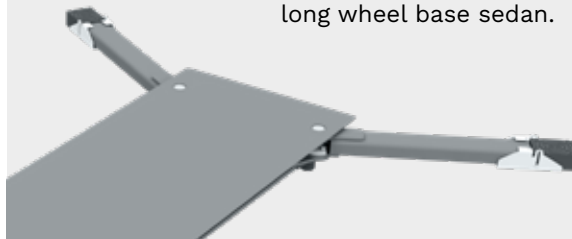


3



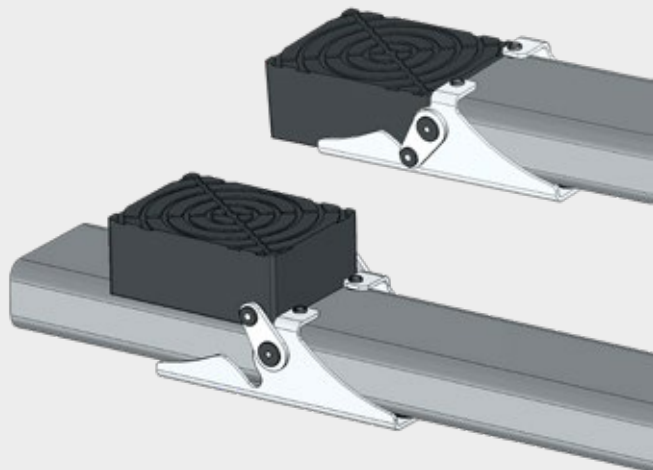
The geometry of the arms

was designed for lifting the entire fleet of cars on the road, from microcars to long wheel base sedan.



Pad always on.

The arms have a built-in pad so they can always remain on the lift, even in the rest position. The lift is ready-to-use without requiring the operator to perform any other work.



The lift can be installed without any additional shim in grids

270 to 370 mm deep.

Changing the standard intake grille is unnecessary. All you have to do is remove the grids for a

2000 x 700 mm surface area.



Compatible with system

TEq-Link
connected workshop

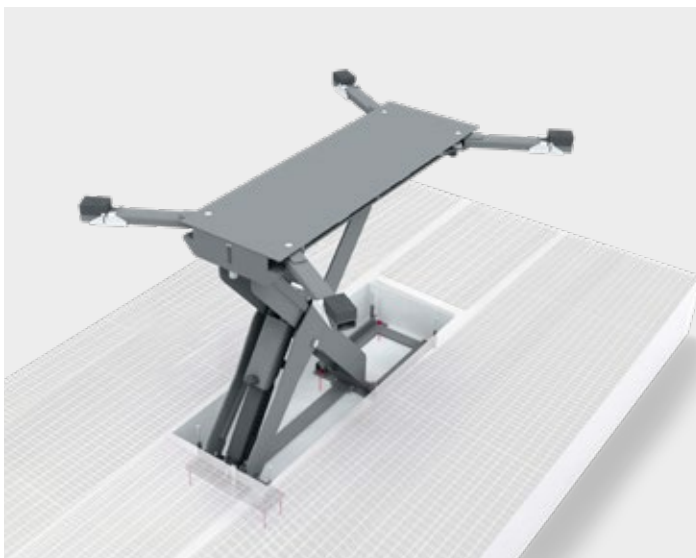


INTERNET CONNECTION

Sending results to the customers.
Remote assistance.

Configurations available.

A wide range of configurations is available to satisfy all types of work cycle in the body shop.



Pneumo-hydraulic with manual arms.

Minimal and compact solution operational without voltage. Also suitable for installation in paint booths.

| Item no. | Capacity |
|------------------|----------|
| RAV.KBI30.199782 | 3 t |

Electro-hydraulic with manual arms.

Hydraulic propulsion makes lifting fast without the “shaking” effect. Extremely less lifting time compared to the pneumo-hydraulic version.

| Item no. | Capacity |
|------------------|----------|
| RAV.KBI30.199812 | 3 t |

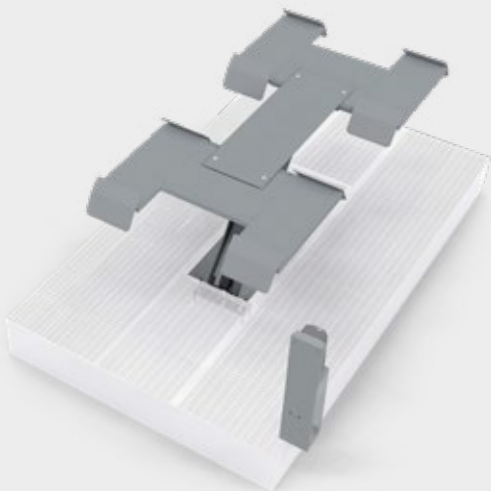


Electro-hydraulic with pneumatic operated arms.

All arms are pneumatically driven when opening and closing to provide faster speed and enhanced ergonomics for use, eliminating the extraction stage and the operator’s manual repositioning of the arms.



| Item no. | Capacity | TEq-Link |
|------------------|----------|----------|
| RAV.KBI30.199850 | 3 t | - |
| RAV.KBI30.199973 | 3 t | ✓ |



Electro-hydraulic with wheel-lifting platforms.

The vehicle is parked directly on the platforms without having to worry about positioning the pads next to the pick-up points of the vehicle.

| Item no. | Capacity |
|------------------|----------|
| RAV.KBI28.199942 | 2.8 t |

ATEX with pneumatic operated arms.

There are no live components in the work area with the anti-explosion configuration meeting Directive 2014/34/ EU. Ideal also for being used inside paint booths. The compact electrical panel is directly installed in the workstation.



ATEX = ATmosphère EXplosible

| Item no. | Capacity | TEq-Link |
|------------------|----------|----------|
| RAV.KBI30.199904 | 3 t | - |
| RAV.KBI30.199997 | 3 t | ✓ |



Maximum ergonomics
for all types of cars.



Elevated lifting height
for working standing straight.

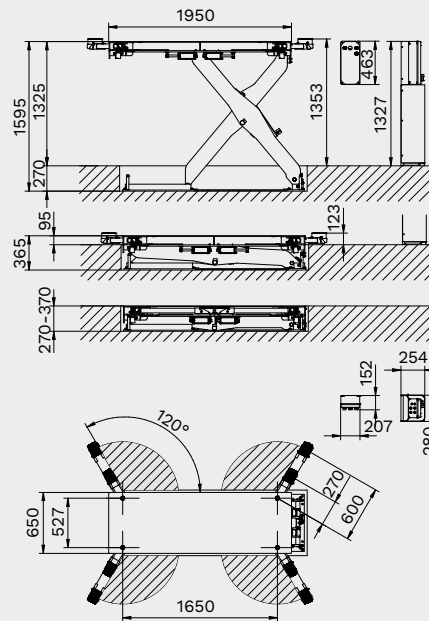


The safety of the operations
is guaranteed by
the automatic arm
locking system and
the mechanical safety
on the cylinder.
(Patent pending)

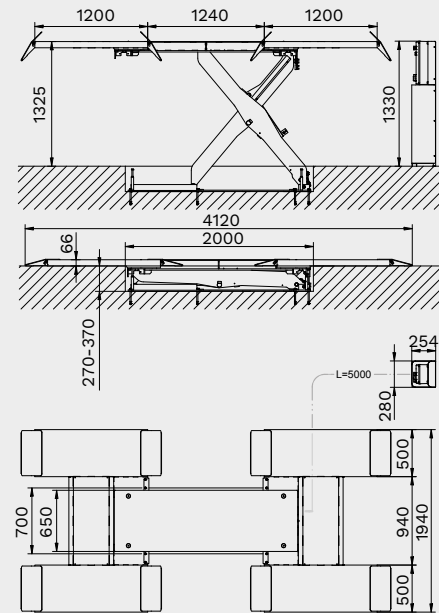


Technical Data

Model
 RAV.KBI30.199782 - RAV.KBI30.199812 -
 RAV.KBI30.199850 - RAV.KBI30.199904 -
 RAV.KBI30.199973 - RAV.KBI30.199997



Model
 RAV.KBI28.199942



| | RAV.KBI30.199782 | RAV.KBI30.199812 | RAV.KBI30.199850 | RAV.KBI30.199973 | RAV.KBI28.199942 | RAV.KBI30.199904 | RAV.KBI30.199997 |
|---|------------------|-------------------|--------------------|--------------------|-------------------------|--------------------|--------------------|
| Mode of drive | pneumo-hydraulic | electro-hydraulic | electro-hydraulic | electro-hydraulic | electro-hydraulic | ATEX | ATEX |
| Type of installation | flush-mounted | flush-mounted | flush-mounted | flush-mounted | flush-mounted | flush-mounted | flush-mounted |
| Capacity | 3000 kg | 3000 kg | 3000 kg | 3000 kg | 2800 kg | 3000 kg | 3000 kg |
| Max. lifting height | 1623 mm | 1623 mm | 1623 mm | 1623 mm | 1325 mm | 1623 mm | 1623 mm |
| Max. lifting height at floor level | 1353 mm | 1353 mm | 1353 mm | 1353 mm | 1325 mm | 1353 mm | 1353 mm |
| Lifting time | 150 s | 40 s | 40 s | 40 s | 40 s | 40 s | 40 s |
| Lowering time | 90 s | 35 s | 35 s | 35 s | 35 s | 35 s | 35 s |
| Surface coating | powder coated | | | | | | |
| Length of platforms | 1950 mm | 1950 mm | 1950 mm | 1950 mm | 1950 mm | 1950 mm | 1950 mm |
| Width of platforms | 650 mm | 650 mm | 650 mm | 650 mm | 650 mm | 650 mm | 650 mm |
| Air flow | 7-8 bar | 7-8 bar | 7-8 bar | 7-8 bar | 7-8 bar | 7-8 bar | 7-8 bar |
| Max. air flow | 8 bar | 8 bar | 8 bar | 8 bar | 8 bar | 8 bar | 8 bar |
| Length | 1950 mm | 1950 mm | 1950 mm | 1950 mm | 4120 mm | 1950 mm | 1950 mm |
| Width | 650 mm | 650 mm | 650 mm | 650 mm | 1940 mm | 650 mm | 650 mm |
| Installation depth | 270-370 mm | 270-370 mm | 270-370 mm | 270-370 mm | 270-370 mm | 270-370 mm | 270-370 mm |
| Arm layout | manual | manual | pneumatic operated | pneumatic operated | wheel-lifting platforms | pneumatic operated | pneumatic operated |
| TEq-Link | not possible | not possible | not possible | standard | not possible | not possible | standard |

Accessories



Wheel-lifting platforms

Platforms for speeding up loading of the vehicle on the lift.
On the contrary, the lifting time is longer to guarantee the stability of the car.



Wheel-lifting platforms

It can be installed on the entire range as retrofitting



Front/back base connection template

Necessary for lift installation
VSG.KBIAC.900128



RAV Italy

Ravaglioli S.p.A.

Via Primo Maggio 3
Pontecchio Marconi
40037 Sasso Marconi BO

☎ +39.051.6781511
📠 +39.051.846349
✉ rav@ravaglioli.com

RAV France

RAV France SARL

4, Rue Longue Raie
ZAC de la Tremblaie
91220 Le Plessis Pâté

☎ +33.1.60.86.88.16
📠 +33.1.60.86.82.04
✉ rav@ravfrance.fr

RAV Germany

BlitzRotary GmbH

Hüfingerring Straße 55
78199 Bräunlingen
Germany

☎ +49.771.9233.0
📠 +49.771.9233.99
✉ ravid@ravaglioli.com

RAV UK

Vehicle Service Group UK Ltd

3 Fourth Avenue,
Bluebridge Industrial Estate
Halstead, Essex, CO9 2SY, UK

☎ +44.1787.477711
📠 +44.1787.477720
✉ rav@ravaglioli.com

DRD41U (03)

Technical data and composition presented in this catalogue may vary.
Pictures reproduced are only indicative.

Member of VSG - Vehicle Service Group
a **DOVER** company

