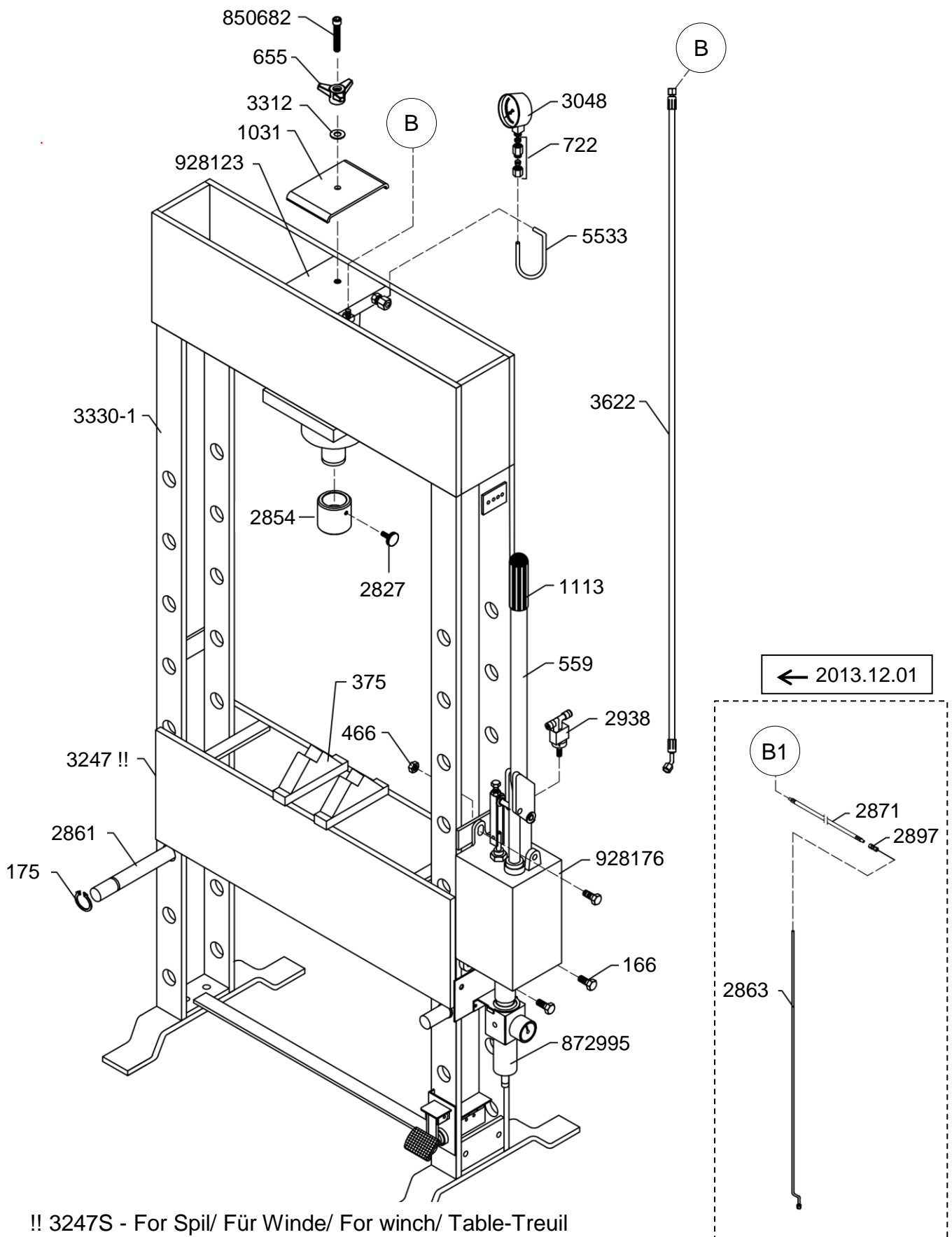


HP25 G6

2011.10.14 →



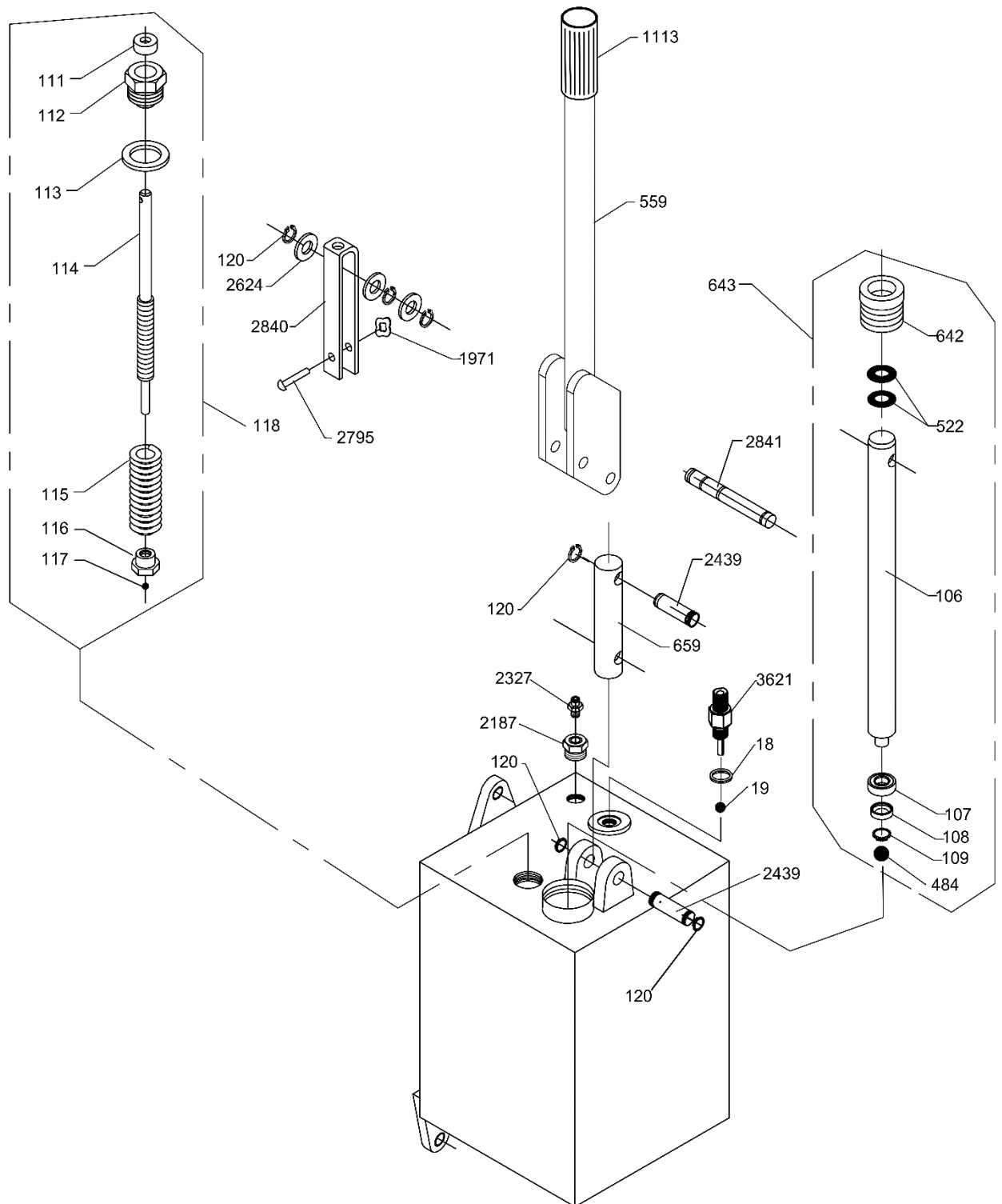
!! 3247S - For Spil/ Für Winde/ For winch/ Table-Treuil

HP25 G6

| No. | Dansk | Deutsch | English | Français |
|---------------|-----------------------------|--------------------------------|-----------------------------|-----------------------------------|
| 166 | Skrue | Schraube | Screw | Vis |
| 175 | Låsering | Seegerring | Lock ring | Circlips |
| 375 | Retteklods | Richtblock | Straightening block | Block de redressage |
| 466 | Møtrik | Mutter | Nut | Ecrou |
| 559 | Pumpehåndtag | Pumpenstange | Pump rod | Levier de pompe |
| 655 | Håndtag | Handgriff | Handle | Poignée |
| 722 | Fitting | Fitting | Fitting | Raccord |
| 1031 | Låseplade | Sicherungsblech | Lock plate | Plaque de verrouillage |
| 1113 | Håndtag | Handgriff | Handle | Poignée |
| 2827 | Skrue | Schraube | Screw | Vis |
| 2854 | Trykhoved | Kolbenkopf | Pistonhead | Tête de piston |
| 2861 | Nagle | Nagel | Rivet | Rivet |
| 2863 | Trykrør | Druckrohr | Pressure pipe | Tuyau de refoulement |
| 2871 | Hydraulik slange | Hydraulikschlauch | Hydraulic hose | Tube hydraulique |
| 2897 | Fitting | Fitting | Fitting | Raccord |
| 2938 | Luftventil | Luftventil | Air valve | Soupape d'air |
| 3048 | Manometer 25T | Manometer 25T | Manometer 25T | Manomètre 25T |
| 3247 | Bord | Tisch | Bench | Table |
| 3247S | Bord for spil | Tisch für Winde | Bench for winch | Table - treuil |
| 3312 | Skive | Scheibe | Washer | Goupille |
| 3330-1 | Chassis (Grøn) | Chassis (Grün) | Chassis (Green) | Chassis (Vert) |
| 3330-12 | Chassis (Rød) | Chassis (Rot) | Chassis (Red) | Chassis (Rouge) |
| 3622 | Hydraulik slange | Hydraulikschlauch | Hydraulic hose | Tube hydraulique |
| 5533 | Manometerør | Rohr f. Manometer | Pipe f. manometer | Tuyau p. manomètre |
| 850682 | Skrue | Schraube | Screw | Vis |
| 872995 | Reduktionsventil | Druckminderventil | Reducing Valve | Détendeur |
| 928176 | Pumpe, komplet | Pumpe, komplett | Pump, complete | Pompe, complet |
| 928123 | Cylinder, komplet | Zylinder, komplett | Cylinder, complete | Cylindre, complet |
| 060085 | Pakningssæt, komplet | Dichtungssatz, komplett | Repair kit, complete | Jeu de réparation, complet |

928176

(PP20/25 G5/G6)

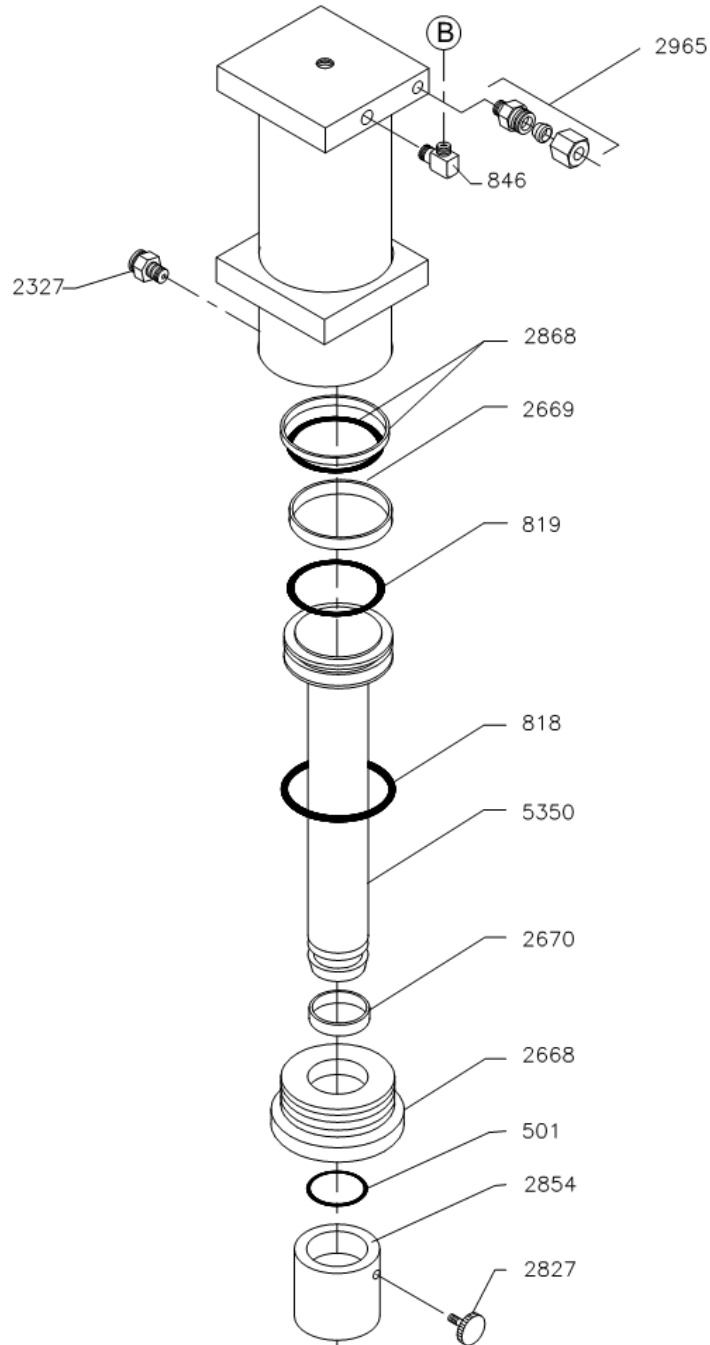


928176

(PP20/25HP G5/6)

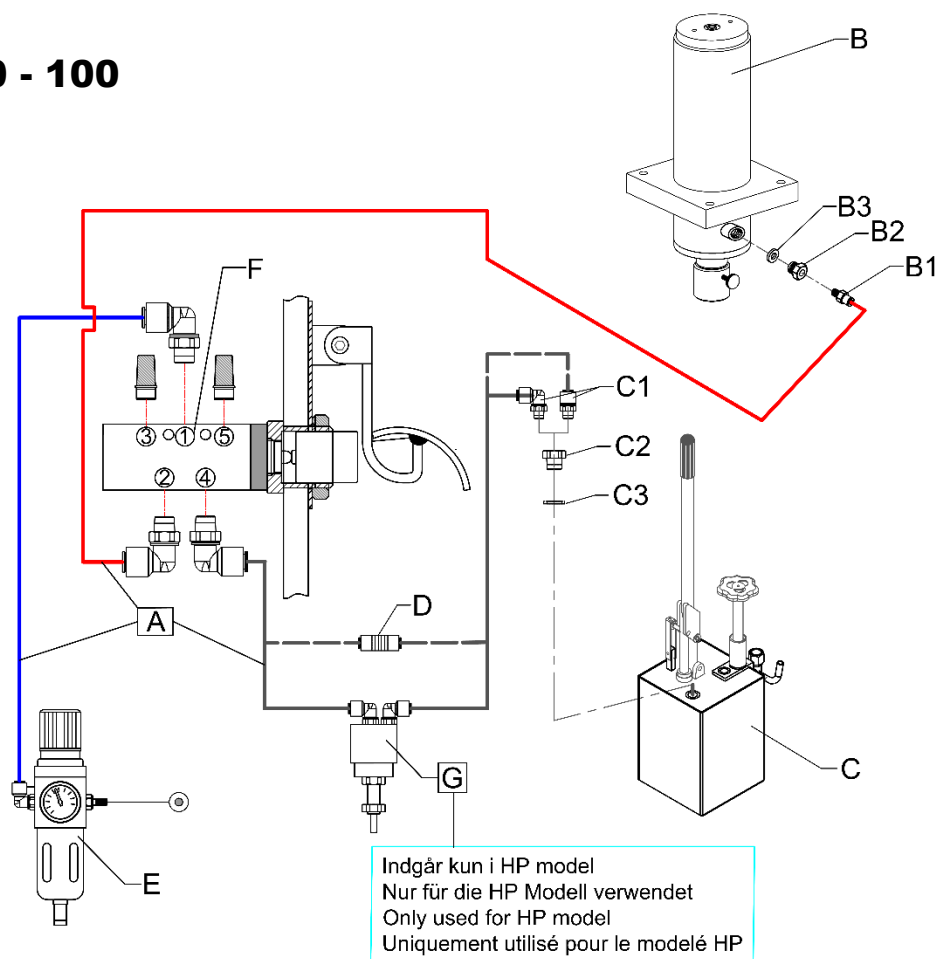
| No. | Dansk | Deutsch | English | Français |
|---------------|---------------------------------------|--|---|--|
| *18 | Kobberpakning | Kupferdichtung | Copper washer | Disque en cuivre |
| *19 | Ventilkugle, 8 mm | Ventilkugel 8 mm | Valve ball 8 mm | Boule de clapet 8 mm |
| 106 | Pumpestempel | Pumpenkolben | Pump piston | Piston de pompe |
| *107 | Manchet | Manschette | Sleeve | Bague |
| *108 | Messingring | Messingring | Brass ring | Rondelle en laiton |
| *109 | Låsering | Sicherungsring | Lock ring | Circlips |
| *111 | Simmerring | Simmerring | Simmer ring | Rondelle simmer |
| 112 | Pakdåse | Stopfbüchse | Stuffing box | Ecrou piston |
| *113 | Pakning | Dichtung | Gasket | Joint d'étanchéité |
| 114 | Returspindel | Abläßspindel | Return spindle | Pivot de retour |
| 115 | Fjeder | Feder | Spring | Ressort |
| 116 | Møtrik | Mutter | Nut | Ecrou |
| *117 | Kugle, 5 mm | Kugel 5 mm | Ball 5 mm | Boule 5 mm |
| 118 | Returventil, kompl. | Ablassventil, kompl. | Return valve, compl. | Clapet de retour, compl. |
| 120 | Låsering | Sicherungsring | Lock ring | Circlips |
| *484 | Ventilkugle 12,7 mm | Ventilkugel 12,7 mm | Valve ball 12,7 mm | Boule de clapet 12,7 mm |
| *522 | O-ring | O-Ring | O-ring | Joint torique |
| 559 | Pumpehåndtag | Handgriff | Handle | Poignée |
| 642 | Pakdåse | Stopfbüchse | Stuffing box | Ecrou de piston |
| 643 | Pumpestempel, kompl. | Pumpenkolben, kompl. | Pump piston, compl. | Piston de pompe, compl. |
| 659 | Mellemlid | Zwischenglied | Connecting link | Bielle en fourche |
| 1113 | Håndtag | Handgriff | Handle | Poignée |
| 1971 | Klemskive | Scheibe | Disc | Disque |
| 2187 | Fitting | Fitting | Fitting | Raccord |
| 2327 | Luftfitting | Fitting f. Luft | Air fitting | Raccord pneumatique |
| 2439 | Nagle | Nagel | Rivet | Rivet |
| 2624 | Skive | Scheibe | Washer | Goupille |
| 2795 | Nitte | Niet | Rivet | Rivet |
| 2840 | Udløserbøjle | Beschlag | Mountings | Bras de déclenchement |
| 2841 | Nagle | Nagel | Rivet | Rivet |
| 3621 | Nippel | Nippel | Nipple | Raccord |
| 060090 | Pakningssæt | Dichtungssatz | Repair kit | Jue de joint |
| * | Indeholdt i pakningssæt 060090 | Im Dichtungssatz 060090 enthalten | Contained in the repair-kit 060090 | Contenu dans le jeu de joint 060090 |

928123 (PC25, G5/G6)



| No. | Dansk | Deutsch | English | Français |
|---------------|------------------------------|-------------------------------|-----------------------------------|---|
| *501 | O-ring | O-ring | O-ring | Joint torique |
| *818 | O-ring | O-ring | O-ring | Joint torique |
| *819 | O-ring | O-ring | O-ring | Joint torique |
| 846 | Fitting | Fitting | Fitting | Raccord |
| 2327 | Fitting | Fitting | Fitting | Raccord |
| 2668 | Pakdåse | Stopfbüchse | Stuffing box | Ecrou piston |
| *2669 | Føringsbånd | Buchse | Bushing | Douille |
| *2670 | Føringsbånd | Buchse | Bushing | Douille |
| 2827 | Skrue | Schraube | Screw | Vis |
| 2854 | Trykhoved | Kolbenkopf | Pistonhead | Tête de piston |
| *2868 | Glydring m. O-ring | Führungsring m. O-ring | Guidering w. O-ring | Joint annulaire et torique |
| 2965 | Fitting | Fitting | Fitting | Raccord |
| 5350 | Stempel | Kolben | Piston | Piston |
| 060096 | Pakningssæt | Dichtungssatz | Repair-kit | Jeu de réparation |
| * | Indeholdt i 060096 | Im 060096 enthalten | Contained in the 060096 | Contenu dans le jeu de joint 060096 |

HP/FP 20 - 100

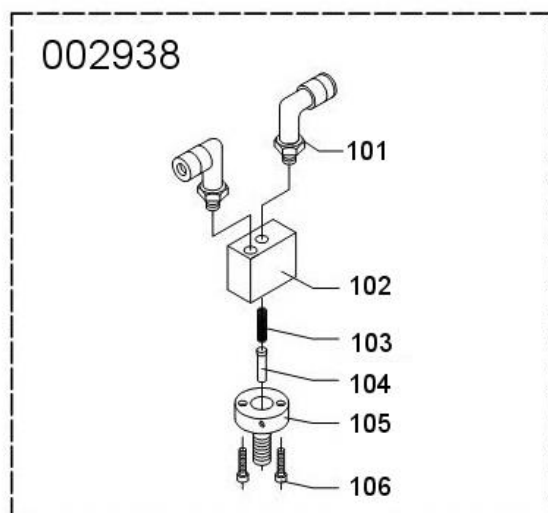


| | A | B | C | B1 | B2 | B3 | C1 | C2 | C3 | D |
|-----------|--------|--------|--------|--------|--------|--------|--------|--------|--------|--------|
| HP20 G6 | 002876 | 928122 | 928176 | 002327 | | | 002327 | 002187 | | |
| FP20 G6 | 002876 | 928122 | 928174 | 002327 | | | 002327 | 002187 | | |
| HP25 G6 | 002876 | 928123 | 928176 | 002327 | | | 002327 | 002187 | | |
| FP25 G6 | 002876 | 928123 | 928174 | 002327 | | | 002327 | 002187 | | |
| HP40 G2 | 003644 | 003581 | 928206 | 002327 | 002187 | 002266 | 002873 | 003614 | 003643 | |
| FP40 G2 | 003644 | 003581 | 928205 | 002327 | 002187 | 002266 | 002873 | 003614 | 003643 | 002331 |
| HP50 G3 | 003644 | 003585 | 928206 | 002327 | 002187 | 002266 | 002873 | 003614 | 003643 | |
| FP50 G3 | 003644 | 003585 | 928205 | 002327 | 002187 | 002266 | 002873 | 003614 | 003643 | 002331 |
| HP60 G2 | 003641 | 003591 | 928203 | 002327 | 002187 | 002266 | 002873 | 003614 | 003643 | |
| HP70 G2 | 003641 | 003593 | 928203 | 002327 | 002187 | 002266 | 002873 | 003614 | 003643 | |
| HP 100 G4 | 003686 | 928130 | 928208 | 002327 | 002187 | 002266 | 002873 | 003614 | 003643 | |

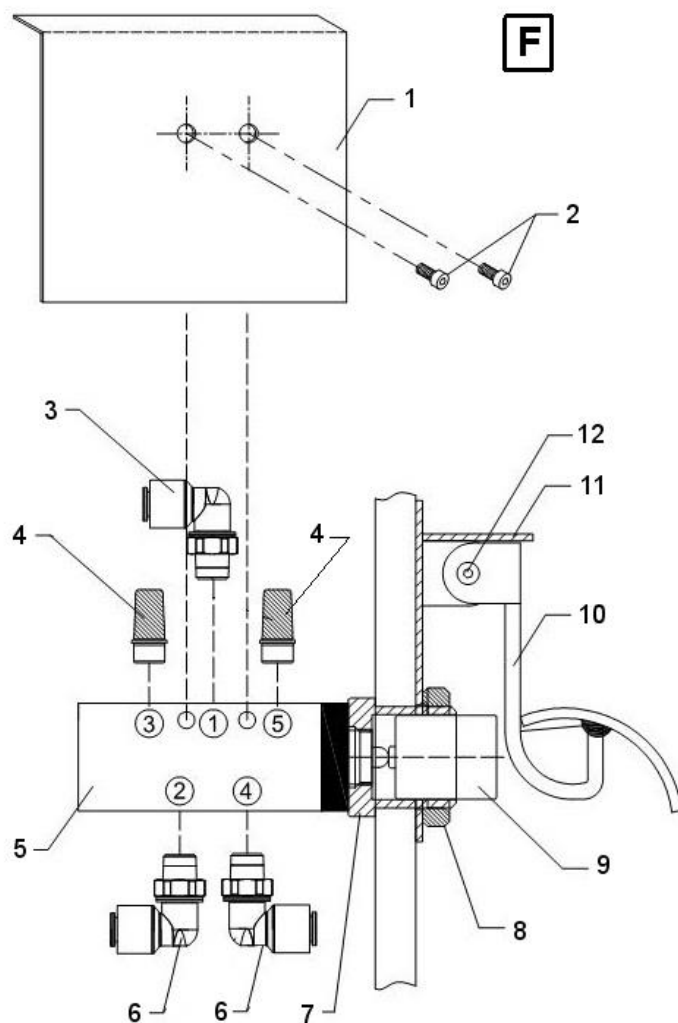
| No | Dansk | Deutsch | English | Français |
|------------|------------------|-------------------|----------------|---------------|
| A | Slange Sæt | Schläuch Satz | Hose Kit | Tube |
| B | Cylinder | Zylinder | Cylinder | Cylindre |
| C | Pumpe | Pumpe | Pump | Pomp |
| B1 | Fitting | Fitting | Fitting | Raccord |
| B2 | Fitting | Fitting | Fitting | Raccord |
| B3 | Skive | Schiebe | Washer | Rondelle |
| C1 | Fitting | Fitting | Fitting | Raccord |
| C2 | Fitting | Fitting | Fitting | Raccord |
| C3 | Skive | Schiebe | Washer | Rondelle |
| D | Fitting 2x6mm | Fitting 2x6mm | Fitting 2x6mm | Raccord 2x6mm |
| E = 872995 | Reduktionsventil | Druckminderventil | Reducing Valve | Détendeur |
| F = 002872 | Ventil | Ventil | Valve | Soup ape |
| G = 002938 | Luftventil | Luftventil | Air valve | Soupape d'air |

HP/FP 20 - 100

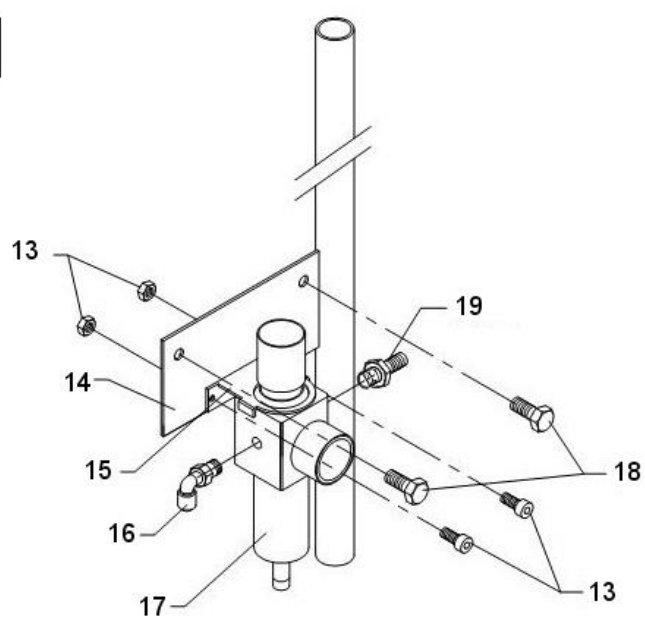
G



F



E



| Pos 7 (*) | No |
|-----------------|--------|
| HP/FP20 - 25 G6 | 003611 |
| HP/FP40 G2 | 003704 |
| HP/FP50 G3 | 003704 |
| HP60/70 G2 | 003642 |
| HP100 G4 | 003703 |

| Pos 14 (**) | No |
|-----------------|--------|
| HP/FP20 - 25 G6 | 003607 |
| HP/FP40 G2 | 003645 |
| HP/FP50 G3 | 003645 |
| HP60/70 G2 | 003646 |
| HP100 G4 | 003709 |

HP/FP 20 – 100

| Pos. | No | Dansk | Deutsch | English | Français |
|------|--------|-------------------------------|----------------------------|--------------------------|----------------------------|
| 1 | 003605 | Skærm f Ventil | Blech f Ventil | Sheet f Valve | Plaque |
| 2 | 003606 | Skrue Komplet | Schraube Komplet | Screw complete | Vis Complet |
| 3 | 002873 | Fitting | Fitting | Fitting | Raccord |
| 4 | 002875 | Lyddæmper | Schalldämpfer | Sound absorber | Sourdine |
| 5 | 002872 | Ventil | Ventil | Valve | Soup ape |
| 6 | 002873 | Fitting | Fitting | Fitting | Raccord |
| 7 | (*) | Adapter for betjenings ventil | Verbindung für Luft Ventil | Connection for Air Valve | Connexion pour vanne d'air |
| 8 | 003604 | Møtrik | Mutter | Nut | Ecrou |
| 9 | 003603 | Glider | Scheiber | Support | Support |
| 10 | 003602 | Fodpedal | Fusspedal | Pedal | Pédale |
| 11 | 003618 | Holder f fodpedal | Halter f Fusspedal | Bracket f Pedal | Support de pédale |
| 12 | 003617 | Skrue Komplet | Schraube Komplet | Screw complete | Vis Complet |
| 13 | 003609 | Skrue Komplet | Schraube Komplet | Screw complete | Vis Complet |
| 14 | (**) | Monterings plade | Montage Blech | Bracket | Support |
| 15 | 003610 | Holder | Halter | Bracket | Support |
| 16 | 872876 | Fitting | Fitting | Fitting | Raccord |
| 17 | 872995 | Reduktionsventil | Druckminderventil | Reducing Valve | Détendeur |
| 18 | 003608 | Skrue Komplet | Schraube Komplet | Screw complete | Vis Complet |
| 19 | 002879 | Slangenippel | Stutzen f. Schlauch | Pipe branch | Tubulure p. tube |

002938

| Pos. | No | Dansk | Deutsch | English | Français |
|------|--------|--------------|-------------------|----------------|-------------------|
| 101 | 002964 | Fitting | Fitting | Fitting | Raccord |
| 102 | 002992 | Ventil | Ventil | Valve | Soupape |
| 103 | 002939 | Fjeder | Feder | Spring | Ressort |
| 104 | 002942 | Stift | Splint | Pin | Cheville |
| 105 | 002941 | Hus f. stift | Gehäuse f. Splint | Housing f. pin | Corps p. cheville |
| 106 | 002940 | Skrue | Schraube | Screw | Vis |