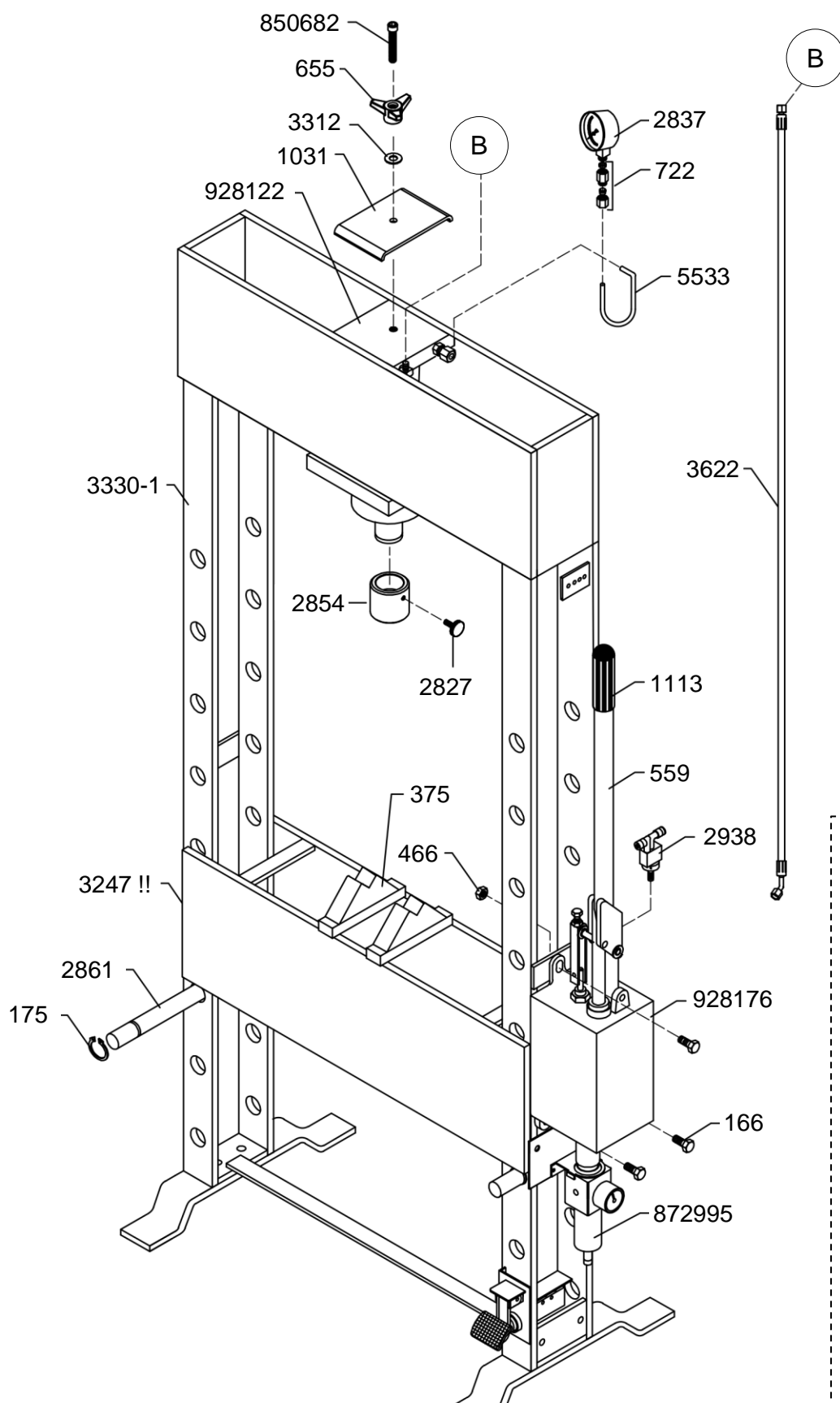


# HP20 G6

2011.10.14



← 2013.12.01

B1

2871

2897

2863

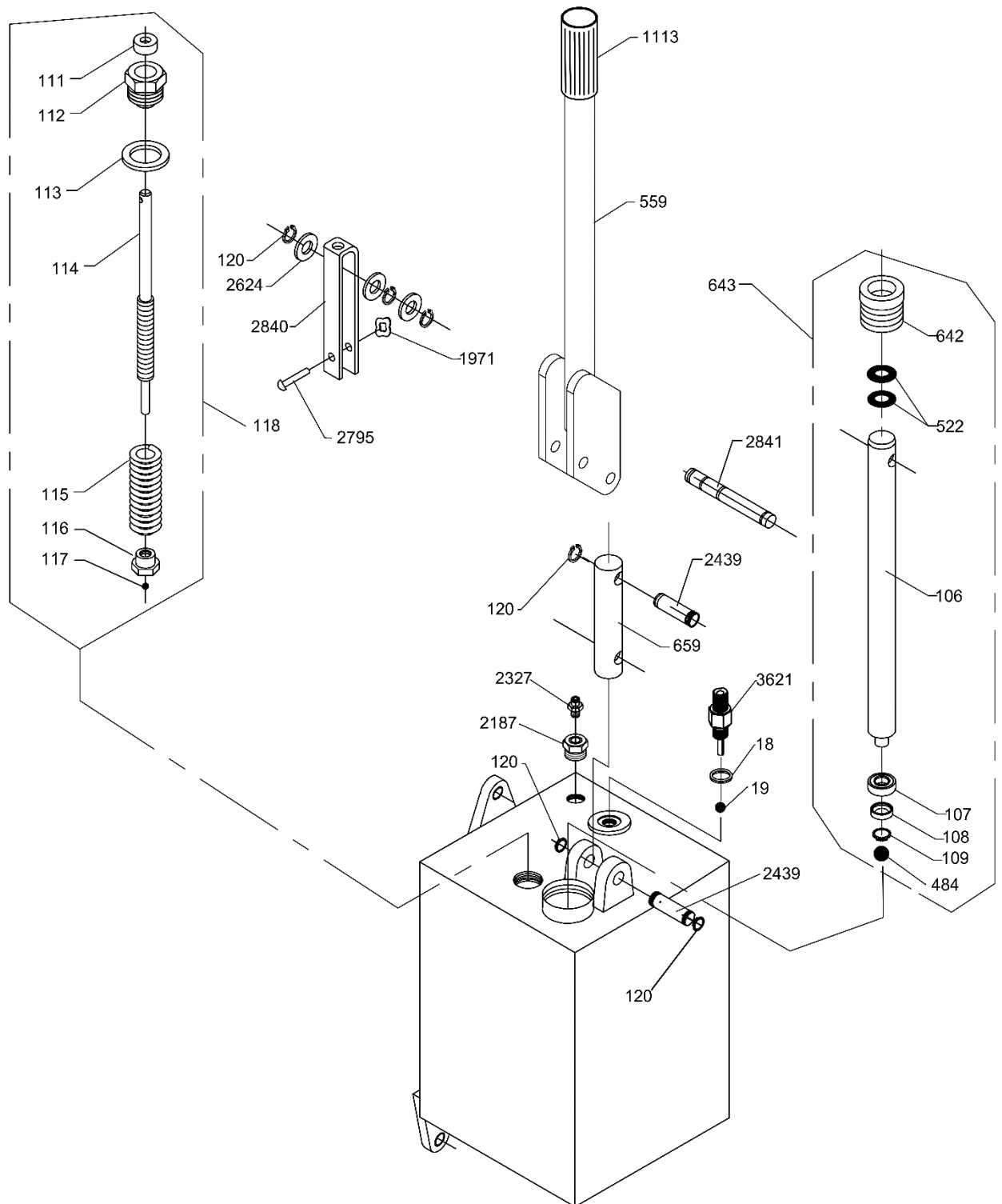
!! 3247S – For spil/ Für Winde/ For winch/ Table treuil

# HP20 G6

No.	Dansk	Deutsch	English	Français
166	Skrue	Schraube	Screw	Vis
175	Låsering	Seegerring	Lock ring	Circlips
375	Retteklods	Richtblock	Straightening block	Block de redressage
466	Møtrik	Mutter	Nut	Ecrou
559	Pumpehåndtag	Pumpenstange	Pump rod	Levier de pompe
655	Håndtag	Handgriff	Handle	Poignée
722	Fitting	Fitting	Fitting	Raccord
1031	Låseplade	Sicherungsblech	Lock plate	Plaque de verrouillage
1113	Håndtag	Handgriff	Handle	Poignée
2827	Skrue	Schraube	Screw	Vis
2837	Manometer 20T	Manometer 20T	Manometer 20T	Manomètre 20T
2854	Trykhoved	Kolbenkopf	Pistonhead	Tête de piston
2861	Nagle	Nagel	Rivet	Rivet
2863	Trykrør	Druckrohr	Pressure pipe	Tuyau de refoulement
2871	Hydraulik slange	Hydraulikschlauch	Hydraulic hose	Tube hydraulique
2897	Fitting	Fitting	Fitting	Raccord
2938	Luftventil	Luftventil	Air valve	Soupape d'air
3247	Bord	Tisch	Bench	Table
3247S	Bord for spil	Tisch für Winde	Bench for winch	Table - treuil
3312	Skive	Scheibe	Washer	Goupille
3330-1	Chassis (Grøn)	Chassis (Grün)	Chassis (Green)	Chassis (Vert)
3330-12	Chassis (Rød)	Chassis (Rot)	Chassis (Red)	Chassis (Rouge)
3622	Hydraulik slange	Hydraulikschlauch	Hydraulic hose	Tube hydraulique
5533	Manometerrør	Rohr f. Manometer	Pipe f. manometer	Tuyau p. manomètre
850682	Skrue	Schraube	Screw	Vis
872995	Reduktionsventil	Druckminderventil	Reducing Valve	Détendeur
928176	Pumpe, komplet	Pumpe, komplett	Pump, complete	Pompe, complet
928122	Cylinder, komplet	Zylinder, komplett	Cylinder, complete	Cylindre, complet
<b>060085</b>	<b>Pakningssæt, komplet</b>	<b>Dichtungssatz, komplett</b>	<b>Repair kit, complete</b>	<b>Jeu de réparation, complet</b>

# 928176

(PP20/25 G5/G6)

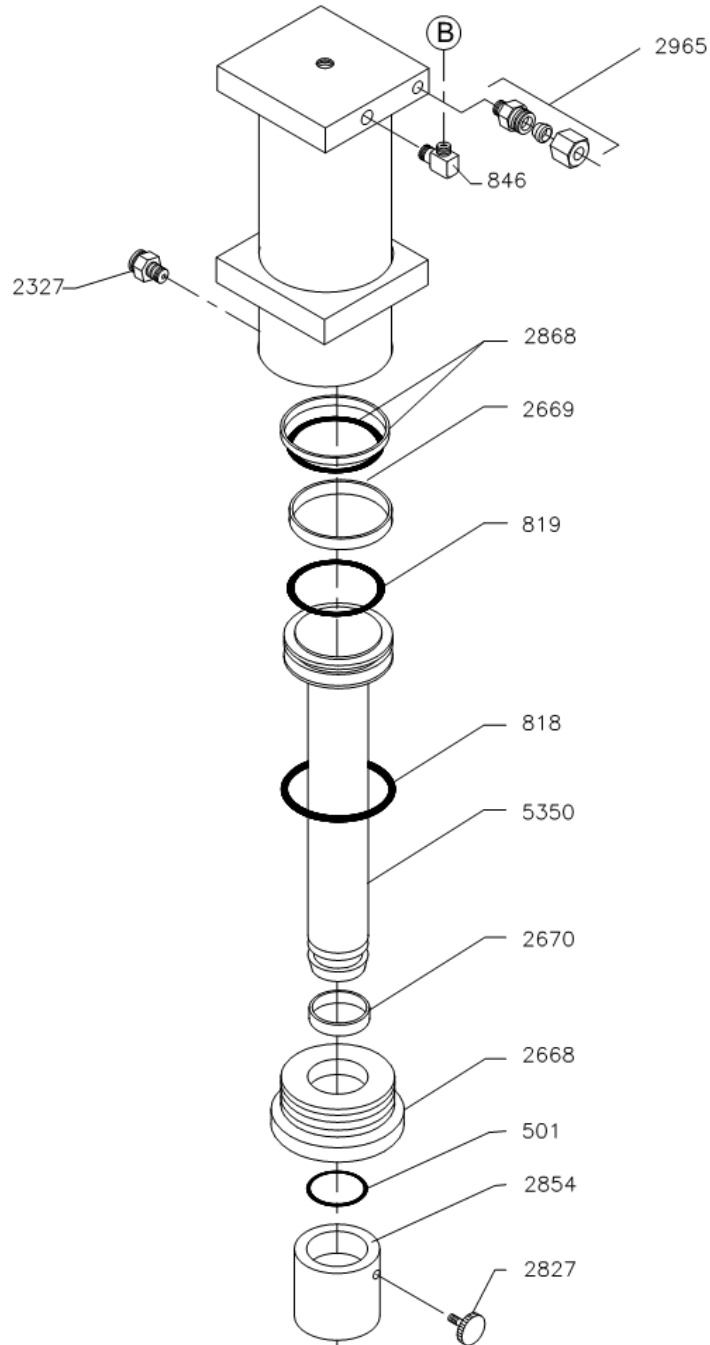


# 928176

## (PP20/25 G5/6)

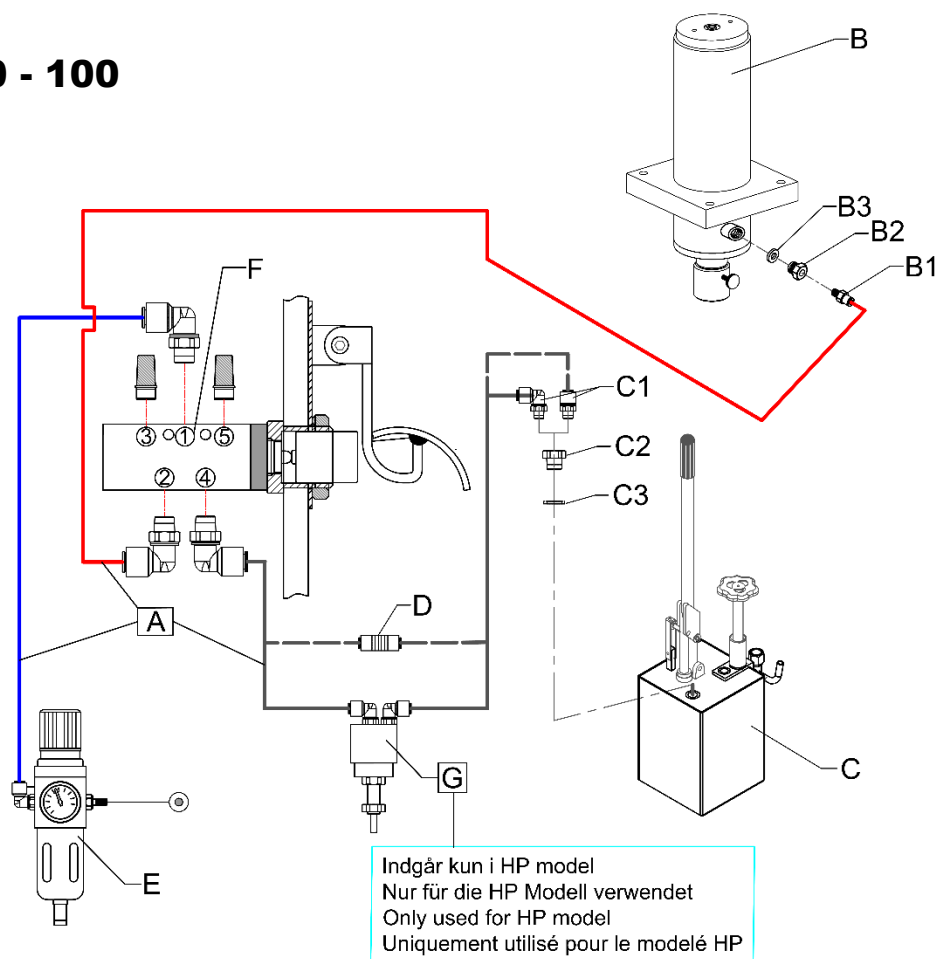
No.	Dansk	Deutsch	English	Français
*18	Kobberpakning	Kupferdichtung	Copper washer	Disque en cuivre
*19	Ventilkugle, 8 mm	Ventilkugel 8 mm	Valve ball 8 mm	Boule de clapet 8 mm
106	Pumpestempel	Pumpenkolben	Pump piston	Piston de pompe
*107	Manchet	Manschette	Sleeve	Bague
*108	Messingring	Messingring	Brass ring	Rondelle en laiton
*109	Låsering	Sicherungsring	Lock ring	Circlips
*111	Simmerring	Simmerring	Simmer ring	Rondelle simmer
112	Pakdåse	Stopfbüchse	Stuffing box	Ecrou piston
*113	Pakning	Dichtung	Gasket	Joint d'étanchéité
114	Returspindel	Abläßspindel	Return spindle	Pivot de retour
115	Fjeder	Feder	Spring	Ressort
116	Møtrik	Mutter	Nut	Ecrou
*117	Kugle, 5 mm	Kugel 5 mm	Ball 5 mm	Boule 5 mm
118	Returventil, kompl.	Ablassventil, kompl.	Return valve, compl.	Clapet de retour, compl.
120	Låsering	Sicherungsring	Lock ring	Circlips
*484	Ventilkugle 12,7 mm	Ventilkugel 12,7 mm	Valve ball 12,7 mm	Boule de clapet 12,7 mm
*522	O-ring	O-Ring	O-ring	Joint torique
559	Pumpehåndtag	Handgriff	Handle	Poignée
642	Pakdåse	Stopfbüchse	Stuffing box	Ecrou de piston
643	Pumpestempel, kompl.	Pumpenkolben, kompl.	Pump piston, compl.	Piston de pompe, compl.
659	Mellemlid	Zwischenglied	Connecting link	Bielle en fourche
1113	Håndtag	Handgriff	Handle	Poignée
1971	Klemskive	Scheibe	Disc	Disque
2187	Fitting	Fitting	Fitting	Raccord
2327	Luftfitting	Fitting f. Luft	Air fitting	Raccord pneumatique
2439	Nagle	Nagel	Rivet	Rivet
2624	Skive	Scheibe	Washer	Goupille
2795	Nitte	Niet	Rivet	Rivet
2840	Udløserbøjle	Beschlag	Mountings	Bras de déclenchement
2841	Nagle	Nagel	Rivet	Rivet
3621	Nippel	Nippel	Nipple	Raccord
<b>060090</b>	Pakningssæt	Dichtungssatz	Repair kit	Jue de joint
*	Indeholdt i pakningssæt <b>060090</b>	Im Dichtungssatz <b>060090</b> enthalten	Contained in the repair-kit <b>060090</b>	Contenu dans le jeu de joint <b>060090</b>

# 928122 (PC20, G5/G6)



No.	Dansk	Deutsch	English	Français
*501	O-ring	O-ring	O-ring	Joint torique
*818	O-ring	O-ring	O-ring	Joint torique
*819	O-ring	O-ring	O-ring	Joint torique
846	Fitting	Fitting	Fitting	Raccord
2327	Fitting	Fitting	Fitting	Raccord
2668	Pakdåse	Stopfbüchse	Stuffing box	Ecrou piston
*2669	Føringsbånd	Buchse	Bushing	Douille
*2670	Føringsbånd	Buchse	Bushing	Douille
2827	Skrue	Schraube	Screw	Vis
2854	Trykhoved	Kolbenkopf	Pistonhead	Tête de piston
*2868	Glydring m. O-ring	Führungsring m. O-ring	Guidering w. O-ring	Joint annulaire et torique
2965	Fitting	Fitting	Fitting	Raccord
5350	Stempel	Kolben	Piston	Piston
<b>060091</b>	<b>Pakningssæt</b>	<b>Dichtungssatz</b>	<b>Repair-kit</b>	<b>Jeu de réparation</b>
*	Indeholdt i <b>060091</b>	Im <b>060091</b> enthalten	Contained in the <b>060091</b>	Contenu dans le jeu de joint <b>060091</b>

# HP/FP 20 - 100

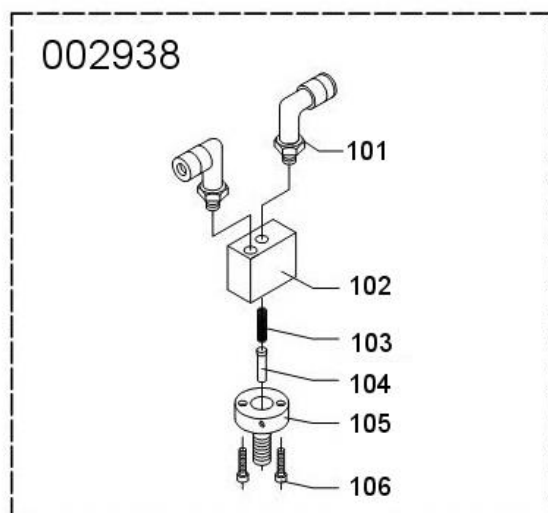


	A	B	C	B1	B2	B3	C1	C2	C3	D
HP20 G6	002876	928122	928176	002327			002327	002187		
FP20 G6	002876	928122	928174	002327			002327	002187		
HP25 G6	002876	928123	928176	002327			002327	002187		
FP25 G6	002876	928123	928174	002327			002327	002187		
HP40 G2	003644	003581	928206	002327	002187	002266	002873	003614	003643	
FP40 G2	003644	003581	928205	002327	002187	002266	002873	003614	003643	002331
HP50 G3	003644	003585	928206	002327	002187	002266	002873	003614	003643	
FP50 G3	003644	003585	928205	002327	002187	002266	002873	003614	003643	002331
HP60 G2	003641	003591	928203	002327	002187	002266	002873	003614	003643	
HP70 G2	003641	003593	928203	002327	002187	002266	002873	003614	003643	
HP 100 G4	003686	928130	928208	002327	002187	002266	002873	003614	003643	

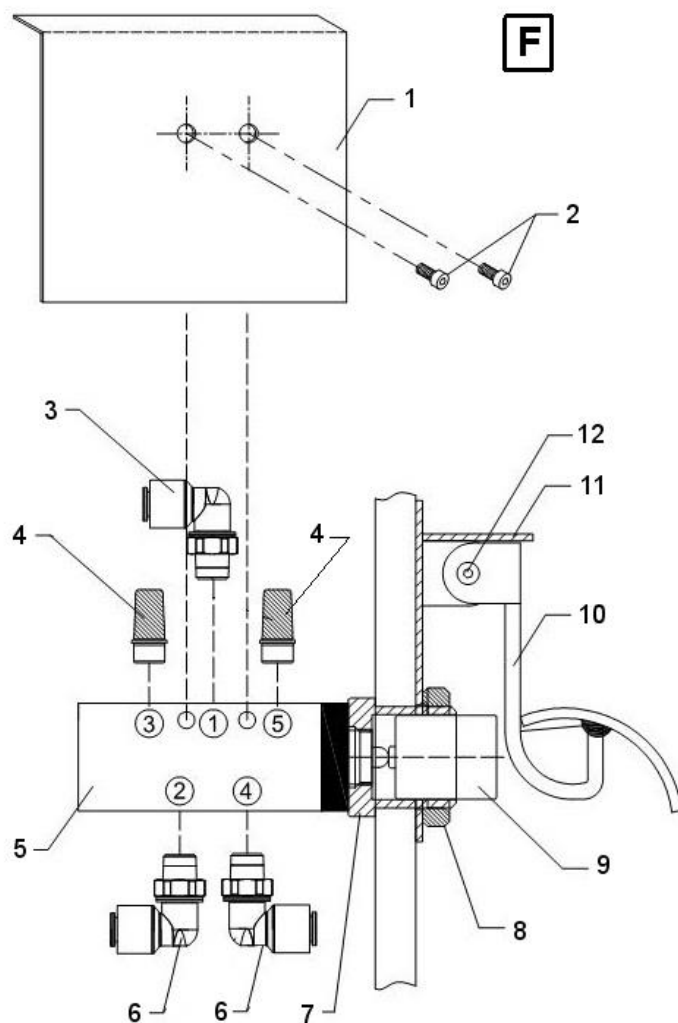
No	Dansk	Deutsch	English	Français
A	Slange Sæt	Schläuch Satz	Hose Kit	Tube
B	Cylinder	Zylinder	Cylinder	Cylindre
C	Pumpe	Pumpe	Pump	Pomp
B1	Fitting	Fitting	Fitting	Raccord
B2	Fitting	Fitting	Fitting	Raccord
B3	Skive	Schiebe	Washer	Rondelle
C1	Fitting	Fitting	Fitting	Raccord
C2	Fitting	Fitting	Fitting	Raccord
C3	Skive	Schiebe	Washer	Rondelle
D	Fitting 2x6mm	Fitting 2x6mm	Fitting 2x6mm	Raccord 2x6mm
E = 872995	Reduktionsventil	Druckminderventil	Reducing Valve	Détendeur
F = 002872	Ventil	Ventil	Valve	Soup ape
G = 002938	Luftventil	Luftventil	Air valve	Soupape d'air

# HP/FP 20 - 100

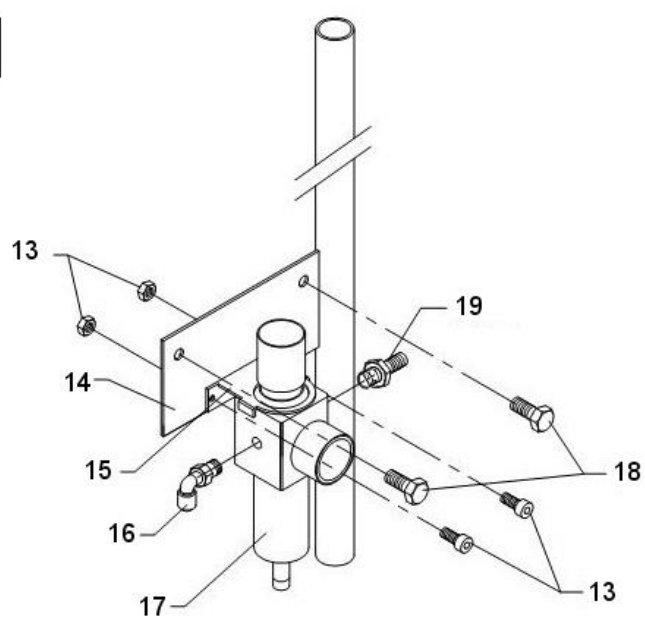
**G**



**F**



**E**



Pos 7 (*)	No
HP/FP20 - 25 G6	003611
HP/FP40 G2	003704
HP/FP50 G3	003704
HP60/70 G2	003642
HP100 G4	003703

Pos 14 (**)	No
HP/FP20 - 25 G6	003607
HP/FP40 G2	003645
HP/FP50 G3	003645
HP60/70 G2	003646
HP100 G4	003709

## HP/FP 20 – 100

Pos.	No	Dansk	Deutsch	English	Français
1	003605	Skærm f Ventil	Blech f Ventil	Sheet f Valve	Plaque
2	003606	Skrue Komplet	Schraube Komplet	Screw complete	Vis Complet
3	002873	Fitting	Fitting	Fitting	Raccord
4	002875	Lyddæmper	Schalldämpfer	Sound absorber	Sourdine
5	002872	Ventil	Ventil	Valve	Soup ape
6	002873	Fitting	Fitting	Fitting	Raccord
7	(*)	Adapter for betjenings ventil	Verbindung für Luft Ventil	Connection for Air Valve	Connexion pour vanne d'air
8	003604	Møtrik	Mutter	Nut	Ecrou
9	003603	Glider	Scheiber	Support	Support
10	003602	Fodpedal	Fusspedal	Pedal	Pédale
11	003618	Holder f fodpedal	Halter f Fusspedal	Bracket f Pedal	Support de pédale
12	003617	Skrue Komplet	Schraube Komplet	Screw complete	Vis Complet
13	003609	Skrue Komplet	Schraube Komplet	Screw complete	Vis Complet
14	(**)	Monterings plade	Montage Blech	Bracket	Support
15	003610	Holder	Halter	Bracket	Support
16	872876	Fitting	Fitting	Fitting	Raccord
17	872995	Reduktionsventil	Druckminderventil	Reducing Valve	Détendeur
18	003608	Skrue Komplet	Schraube Komplet	Screw complete	Vis Complet
19	002879	Slangenippel	Stutzen f. Schlauch	Pipe branch	Tubulure p. tube

002938

Pos.	No	Dansk	Deutsch	English	Français
101	002964	Fitting	Fitting	Fitting	Raccord
102	002992	Ventil	Ventil	Valve	Soupape
103	002939	Fjeder	Feder	Spring	Ressort
104	002942	Stift	Splint	Pin	Cheville
105	002941	Hus f. stift	Gehäuse f. Splint	Housing f. pin	Corps p. cheville
106	002940	Skrue	Schraube	Screw	Vis